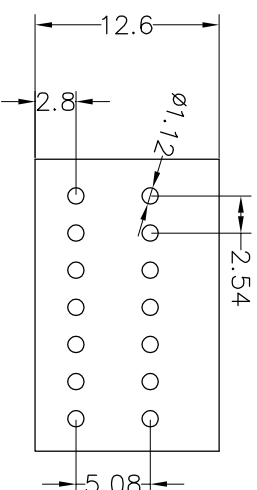
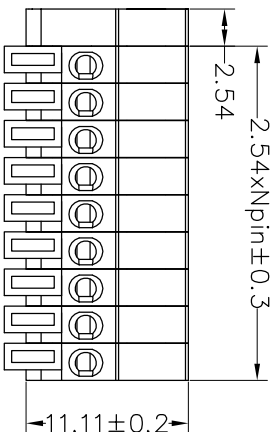


**SPECIFICATIONS**

Rated(额定参数): 150V,5A  
 Dielectric strength(抗电强度): AC2000V/1 Minute  
 Insulation Resistance(绝缘电阻):1000MΩ Min  
 Contact Resistance(接触电阻):20mΩ Max  
 Wire Range(线径):20~26AWG  
 Strip length(剥线长度):11mm  
 Temp. range(操作温度): -40°C~+105°C  
 MAX Soldering(瞬时温度):+250°C,5s

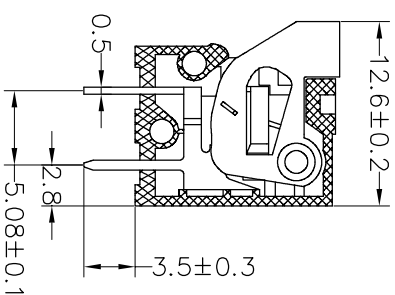
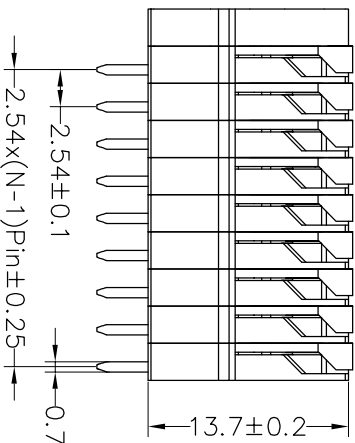
Housing Material(塑件): PA66 (UL94 V-0)  
 Contact(端子): Brass, Tin plating(黄铜镀锡)  
 Reed(弹片): Stainless seel (不锈钢)



**Ordering Information**

**JL 141V - 254 XX G X 1**

Pitch 254=2.54PH  
 No.of pins 1P-XXP  
 Housing Color: B=Black, G=Green, U=Blue, R=Red, W=White, Y=Yellow, O=Orange, E=Grey  
 Packing: 0=Pe bog, T=Tube, A=Troy



OPERATION	X.X	±0.30	DRAW	yyusheng	18.09.08	SCALE	FIT	<b>JILIN</b> ® 深圳市锦凌电子有限公司 SHENZHEN JINLING ELECTRONIC CO.,LTD Tel: 86-755-2997-5806/5802 Fax: 86-755-2997-5992	
	X.XX	±0.20		CHECK		UNIT	mm		
ANGLE	X.XXX	±0.10	APPROVE		PROU.	SIZE	A4	PART NO.	JL 141V-254XXGX1
	Angle	±3°				SHEET	1/1		TITLE:
REV	DATE	MODIFICATION DESCRIPTION	CHANGE	DIM	TOL				
1									

**JILIN**® 深圳市锦凌电子有限公司  
 SHENZHEN JINLING ELECTRONIC CO.,LTD  
 Tel: 86-755-2997-5806/5802 Fax: 86-755-2997-5992

PART NO. JL 141V-254XXGX1

TITLE: 2.54mm PCB SPRING TERMINAL BOLCKS

## X-ON Electronics

Largest Supplier of Electrical and Electronic Components

*Click to view similar products for [Fixed Terminal Blocks](#) category:*

*Click to view products by [JILN](#) manufacturer:*

Other Similar products are found below :

[MBE-1512](#) [MBE-1520](#) [MBE-154](#) [MBE-156](#) [MBES-156](#) [MH-2512](#) [MHE-132](#) [MHE-163](#) [MI-254 \(35\)](#) [MI-272](#) [MPT-275](#) [ELM10110G](#)  
[BA311TU](#) [BA411SU](#) [MV-253/NCNOC](#) [MV-254-D](#) [MV-255](#) [MV-493](#) [MVE-252](#) [MVE-253](#) [MVE-273](#) [MVEB-153](#) [1700096](#) [1705142](#)  
[1712417](#) [1713088](#) [1745195](#) [1760594](#) [1-796689-8](#) [1-796692-6](#) [1800114](#) [20020314-C121B01LF](#) [20020316-G041B01LF](#) [KP03215000J0G](#)  
[KP04215000J0G](#) [S451](#) [29.007](#) [29.116](#) [30.103](#) [30.106](#) [30.503](#) [30.608](#) [30.755](#) [30.853](#) [9872-0-00-15-00-00-33-0](#) [996750](#) [1706303](#) [1710052](#)  
[1712418](#) [1733868](#)