

NOTES:

UL Standard

1. Rated Voltage/Current : 300V / 10A
2. Withstanding Voltage : AC1500V/1Min.
3. Contact Resistance : 20mΩ Max
4. Wire Range : 22~14AWG

NOTES:

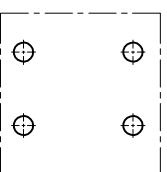
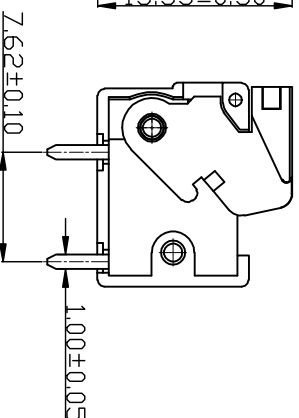
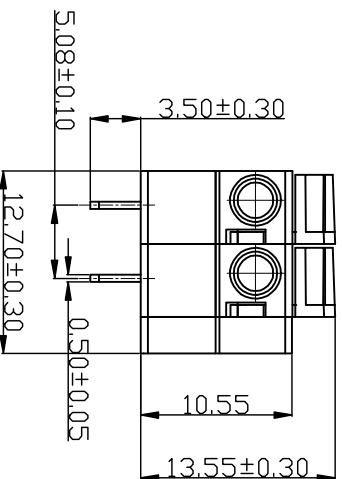
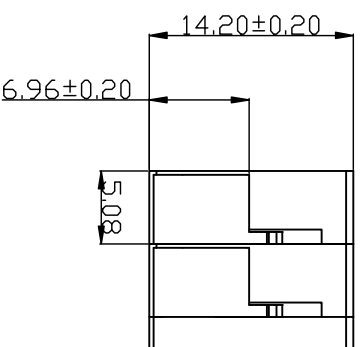
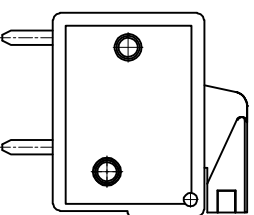
1. Dimension shall be interpreted per ASME Y14.5-2009
2. Pitch : 5.08mm, Poles : N=02P
3. Stripping length : 8-10mm
4. Operating temperature : -40°C~+105°C
5. Undimensioned Tolerances:

Pitch range in mm	Nominal dimension range in mm	Tolerance	
		—	∠
≤8	8 ~ 16	≤6	∠
16 ~ 24	16 ~ 24	30 ~ 90	∠
24 ~ 30	24 ~ 30	90 ~ 200	∠
30 ~ 48	30 ~ 48	200 ~ 480	∠
48 ~ 70	48 ~ 70	480 ~ 700	∠
70 ~ 100	70 ~ 100	700 ~ 1000	∠

Ordering Information

JL142R - 508 02 G A 1

Pitch 508=5.08PH No. of pins 2P~24P Housing Color B=Black G=Green U=Blue R=Red W=White Y=Yellow D=Orange E=Grey
 Packing 0=Pe bag A=Tray T=Tube



Recommended P.C.B Layout

REVISION RECORD			
REV	ECN	DESCRIPTION	DATE

DRAWN	LICHIAO LIU		SCALE	FIT	PART NO.	JL142R-50802GA1
CHECK	LICHIAO LIU		UNIT	mm		
APPROVE	高永亮		SIZE	A4	TITLE:	JL142R-508-2P 弹簧式/绿色/盒装
			SHEET	1/1		

JILIN 东莞市锦凌电子有限公司
 DONGGUAN JILIN ELECTRONIC CO., LTD

X-ON Electronics

Largest Supplier of Electrical and Electronic Components

Click to view similar products for [Fixed Terminal Blocks](#) category:

Click to view products by [JILN](#) manufacturer:

Other Similar products are found below :

[MBE-1512](#) [MBE-1520](#) [MBE-154](#) [MBE-156](#) [MBES-156](#) [MH-2512](#) [MHE-132](#) [MHE-163](#) [MI-254 \(35\)](#) [MPT-275](#) [ELM10110G](#) [BA311TU](#)
[BA411SU](#) [MV-254-D](#) [MV-255](#) [MV-493](#) [MVE-252](#) [MVE-253](#) [MVEB-153](#) [1705142](#) [1-796689-8](#) [1841320000](#) [S451](#) [29.007](#) [29.116](#) [30.204](#)
[30.503](#) [30.756](#) [30.853](#) [9872-0-00-15-00-00-33-0](#) [996750](#) [1710052](#) [20020316-G071B01LF](#) [20020327-C061B01LF](#) [29590](#) [30.652](#) [30.710](#)
[30.754](#) [30.757](#) [32.058](#) [37.206](#) [37.208](#) [37.507](#) [37.558](#) [38331-5812](#) [38331-8018](#) [38540-1910](#) [39.002](#) [MBE-1517](#) [MBE-153](#)