

NOTES:

UL Standard

1. Rated Voltage/Current : 300V / 10A
2. Withstanding Voltage : AC1500V/1Min.
3. Contact Resistance : 20mΩ Max
4. Wire Range : 22~14AWG

NOTES:

1. Dimension shall be interpreted per ASME Y14.5-2009
2. Pitch : 5.08mm, Poles : N=02P
3. Stripping length : 8-10mm
4. Operating temperature : -40°C~+105°C
5. Undimensioned Tolerances:

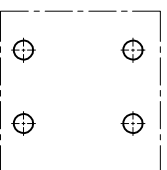
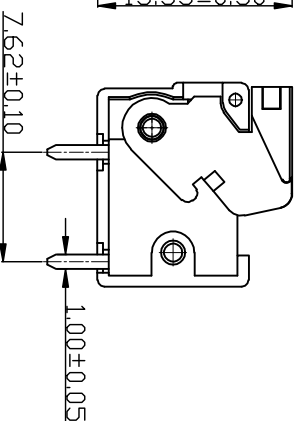
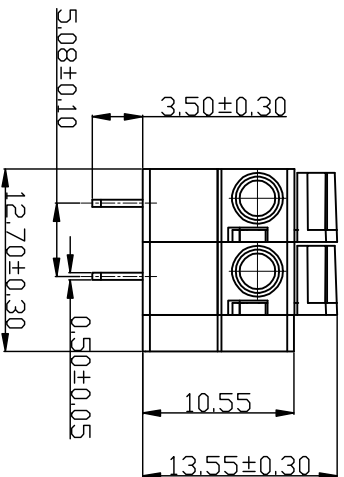
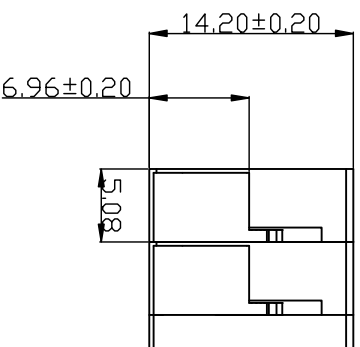
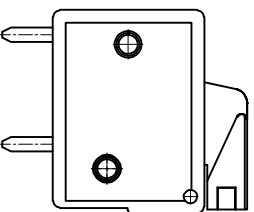
Pitch range in mm	Nominal dimension range in mm	
	—	∠
≤8	8 ~ 16	≤6
±0.08	16 ~ 24	30 ~ 90
±0.13	24 ~ 30	90 ~ 200
±0.18	30 ~ 48	200 ~ 480
±0.10	48 ~ 70	480 ~ 700
±0.20	70 ~ 100	700 ~ 1000
±0.30	100 ~ 150	1000 ~ 1500
±0.50	150 ~ 200	1500 ~ 2000
±0.70	200 ~ 300	2000 ~ 3000
±1.0	300 ~ 500	3000 ~ 5000

Ordering Information

JL142R - 508 02 G A 1

Pitch 508=5.08PH No. of pins 2P~24P Housing Color B=Black G=Green U=Blue R=Red W=White Y=Yellow D=Drange E=Grey

Packing 0=Pe bag A=Tray T=Tube



Recommended P.C.B Layout

REVISION RECORD			
REV	ECN	DESCRIPTION	DATE

DRAWN	LICHIAO LIU	SCALE	FIT	PART NO.	JL142R-50802GA1
CHECK	LICHIAO LIU	UNIT	mm		
APPROVE	高永亮	SIZE	A4	TITLE:	JL142R-5.08-2P 弹簧式/绿色/盒装
		SHEET	1/1		
		PRD			

JILIN 东莞市锦凌电子有限公司
DONGGUAN JILIN ELECTRONIC CO., LTD

X-ON Electronics

Largest Supplier of Electrical and Electronic Components

Click to view similar products for [Fixed Terminal Blocks](#) category:

Click to view products by [JILN](#) manufacturer:

Other Similar products are found below :

[MBE-1512](#) [MBE-1520](#) [MBE-154](#) [MBE-156](#) [MBES-156](#) [MH-2512](#) [MHE-132](#) [MHE-163](#) [MI-254 \(35\)](#) [MI-272](#) [MPT-275](#) [ELM10110G](#)
[BA311TU](#) [BA411SU](#) [MV-253/NCNOC](#) [MV-254-D](#) [MV-255](#) [MV-493](#) [MVE-252](#) [MVE-253](#) [MVE-273](#) [MVEB-153](#) [1700096](#) [1705142](#)
[1712417](#) [1713088](#) [1745195](#) [1760594](#) [1-796689-8](#) [1-796692-6](#) [1800114](#) [20020314-C121B01LF](#) [20020316-G041B01LF](#) [KP03215000J0G](#)
[KP04215000J0G](#) [S451](#) [29.007](#) [29.116](#) [30.103](#) [30.106](#) [30.503](#) [30.608](#) [30.755](#) [30.756](#) [30.853](#) [9872-0-00-15-00-00-33-0](#) [996750](#) [1706303](#)
[1710052](#) [1712418](#)