

NOTES1:

UL Standard

1. Rated voltage/current : 300V / 8A
2. Withstanding voltage : AC1600V/1Min.

IEC Standard

1. Pollution degree	2
Overvoltage category	II
Rate impulse voltage(KV)	2.5KV
Rate voltage(V)	250V
Rate current(A)	12A

NOTES2:

1. Dimension shall be interpreted per ASME Y14.5-2009
2. Pitch : 3.50mm, Poles : N=02~24P
3. Operating temperature: -40°C~+105°C
4. Undimensioned tolerances:

Pitch range	In mm		Nominal dimension range		Over	
	mm	In	mm	In	mm	In
6	Over	10	TO	30	Over	60
10	TO	24	TO	60	TO	100
15	TO	30	TO	100	TO	150
20	TO	30	TO	150	TO	150
25	TO	30	TO	150	TO	150
30	TO	30	TO	150	TO	150
35	TO	30	TO	150	TO	150
40	TO	30	TO	150	TO	150
45	TO	30	TO	150	TO	150
50	TO	30	TO	150	TO	150
55	TO	30	TO	150	TO	150
60	TO	30	TO	150	TO	150
65	TO	30	TO	150	TO	150
70	TO	30	TO	150	TO	150
75	TO	30	TO	150	TO	150
80	TO	30	TO	150	TO	150
85	TO	30	TO	150	TO	150
90	TO	30	TO	150	TO	150
95	TO	30	TO	150	TO	150
100	TO	30	TO	150	TO	150
105	TO	30	TO	150	TO	150
110	TO	30	TO	150	TO	150
115	TO	30	TO	150	TO	150
120	TO	30	TO	150	TO	150
125	TO	30	TO	150	TO	150
130	TO	30	TO	150	TO	150
135	TO	30	TO	150	TO	150
140	TO	30	TO	150	TO	150
145	TO	30	TO	150	TO	150
150	TO	30	TO	150	TO	150
155	TO	30	TO	150	TO	150
160	TO	30	TO	150	TO	150
165	TO	30	TO	150	TO	150
170	TO	30	TO	150	TO	150
175	TO	30	TO	150	TO	150
180	TO	30	TO	150	TO	150
185	TO	30	TO	150	TO	150
190	TO	30	TO	150	TO	150
195	TO	30	TO	150	TO	150
200	TO	30	TO	150	TO	150
205	TO	30	TO	150	TO	150
210	TO	30	TO	150	TO	150
215	TO	30	TO	150	TO	150
220	TO	30	TO	150	TO	150
225	TO	30	TO	150	TO	150
230	TO	30	TO	150	TO	150
235	TO	30	TO	150	TO	150
240	TO	30	TO	150	TO	150
245	TO	30	TO	150	TO	150
250	TO	30	TO	150	TO	150
255	TO	30	TO	150	TO	150
260	TO	30	TO	150	TO	150
265	TO	30	TO	150	TO	150
270	TO	30	TO	150	TO	150
275	TO	30	TO	150	TO	150
280	TO	30	TO	150	TO	150
285	TO	30	TO	150	TO	150
290	TO	30	TO	150	TO	150
295	TO	30	TO	150	TO	150
300	TO	30	TO	150	TO	150

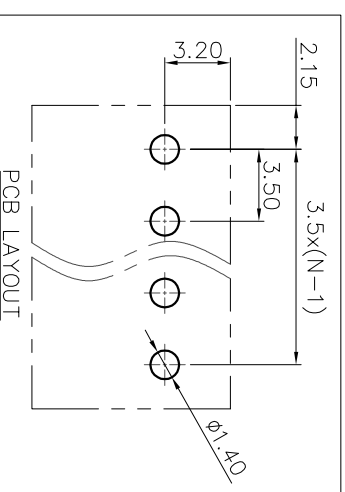
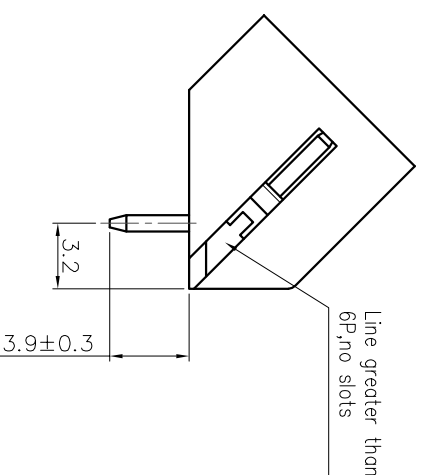
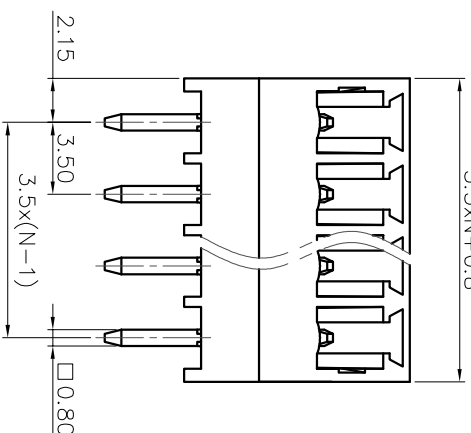
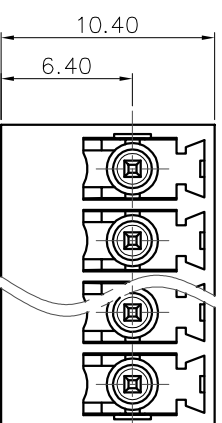
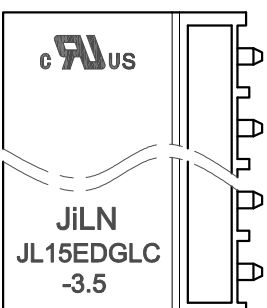
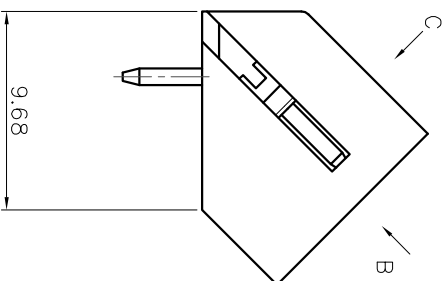
5. RoHS Compliance

Ordering Information

JL15EDGLC-350 XX G 0 1

Pitch 350=3.50PH
 No of pins 2P~24P
 Housing Color
 B=Black
 G=Green
 U=Blue
 R=Red
 W=White
 Y=Yellow
 D=Orange
 E=Grey

Packing
 0=Pe
 T=Tube
 A=Tray



DRAW	SHUANGPING ZHENG		SCALE	FIT	PART NO.	JL15EDGLC-350XXG01
	CHECK	LICHAD LIU	UNIT	mm		
APPROVE	YONGLIANG GAO		SIZE	A4	TITLE:	JL15EDGLC-350-XXP 插拔式公座/绿色
			SHEET	1/1		
			PRD			

JILIN 东莞市锦凌电子有限公司
 DONGGUAN JINLING ELECTRONIC CO., LTD

PART NO. JL15EDGLC-350XXG01

TITLE: JL15EDGLC-350-XXP 插拔式公座/绿色

X-ON Electronics

Largest Supplier of Electrical and Electronic Components

Click to view similar products for [Pluggable Terminal Blocks](#) category:

Click to view products by [JILN](#) manufacturer:

Other Similar products are found below :

[57.510.0053](#) [MC 1.5/ 6-ST-3.5 GY AU](#) [ET02015000J0G](#) [734-104](#) [734-302](#) [860505](#) [860516](#) [860810](#) [GBPACX-12](#) [93.731.4953.0](#) [PV05-5,08-K](#) [PVP03-3,50](#) [PVP04-3,50](#) [PVS02-5,00](#) [1-1986160-3](#) [1377680000](#) [1531000000](#) [1546228-5](#) [ELFP03110](#) [ELFT07250](#) [ELVD12100](#) [ELVF09400](#) [ELVP03100](#) [ELXH071G0E](#) [1700410](#) [1702246](#) [1705229](#) [1714537](#) [1717806](#) [1719600](#) [1728941](#) [1734692](#) [1734795](#) [1740291](#) [1740628](#) [1746952](#) [1750207](#) [1752865](#) [1754115](#) [1754144](#) [1756913](#) [1760051](#) [1760336](#) [1765111](#) [1776388](#) [1777701](#) [1783410](#) [1800227](#) [1801080](#) [1809474](#)