

NOTES1:

UL Standard

1. Rated voltage/current : 300V / 12A
2. Withstanding voltage : AC1600V/1Min.
3. Wire range : 28~14AWG

IEC Standard

1. Pollution degree	2	2	3
Overvoltage category	II	III	III
Rate impulse voltage(KV)	2.5KV	2.5KV	2.5KV
Rate voltage(V)	320V	200V	200V
Rate current(A)	17.5A		

2. Wire range : 0.2~1.5mm<sup>2</sup>

NOTES2:

1. Dimension shall be interpreted per ASME Y14.5-2009
2. Pitch : 3.50mm, Poles : N=02~24P
3. Stripping length : 8~9mm
4. Operating temperature: -40°C~+130°C
5. Undimensioned tolerances:

Pitch range in mm	Nominal dimension range			In mm	In mm
	Over	Over	Over		
6 TO 10	10	30	60	100	150
10 TO 24	24	30	60	100	150
24 TO 30	30	60	100	150	±2*
30 TO 60	60	100	150	±1.00	±1.30
60 TO 100	100	150	±1.00	±1.30	±2*

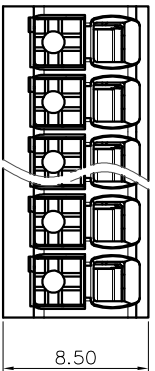
6. RoHS Compliance

## Ordering Information

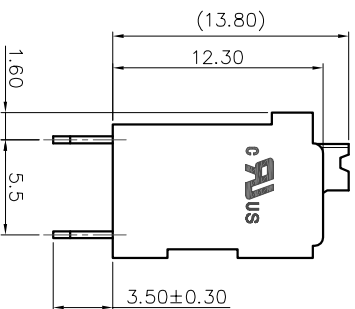
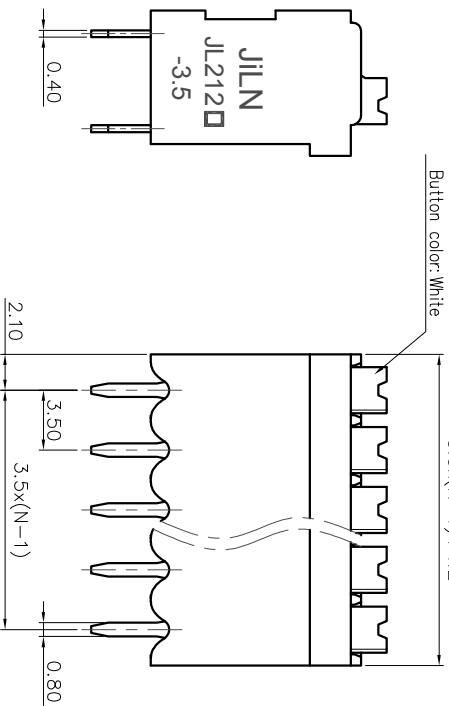
JL212V- 350 XX B 0 1

Pitch 350=3.50PH  
No. of pins 2P~24P  
Housing Color  
B=Black  
G=Green  
U=Blue  
R=Red  
W=White  
Y=Yellow  
O=Orange  
E=Grey

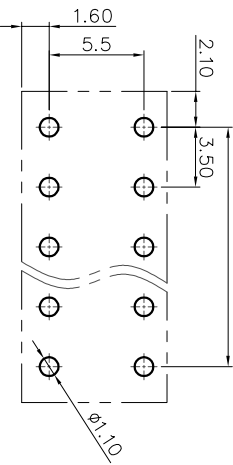
Packing  
0=Pe bag  
T=Tube  
A=Tray



Button color: White



PCB LAYOUT



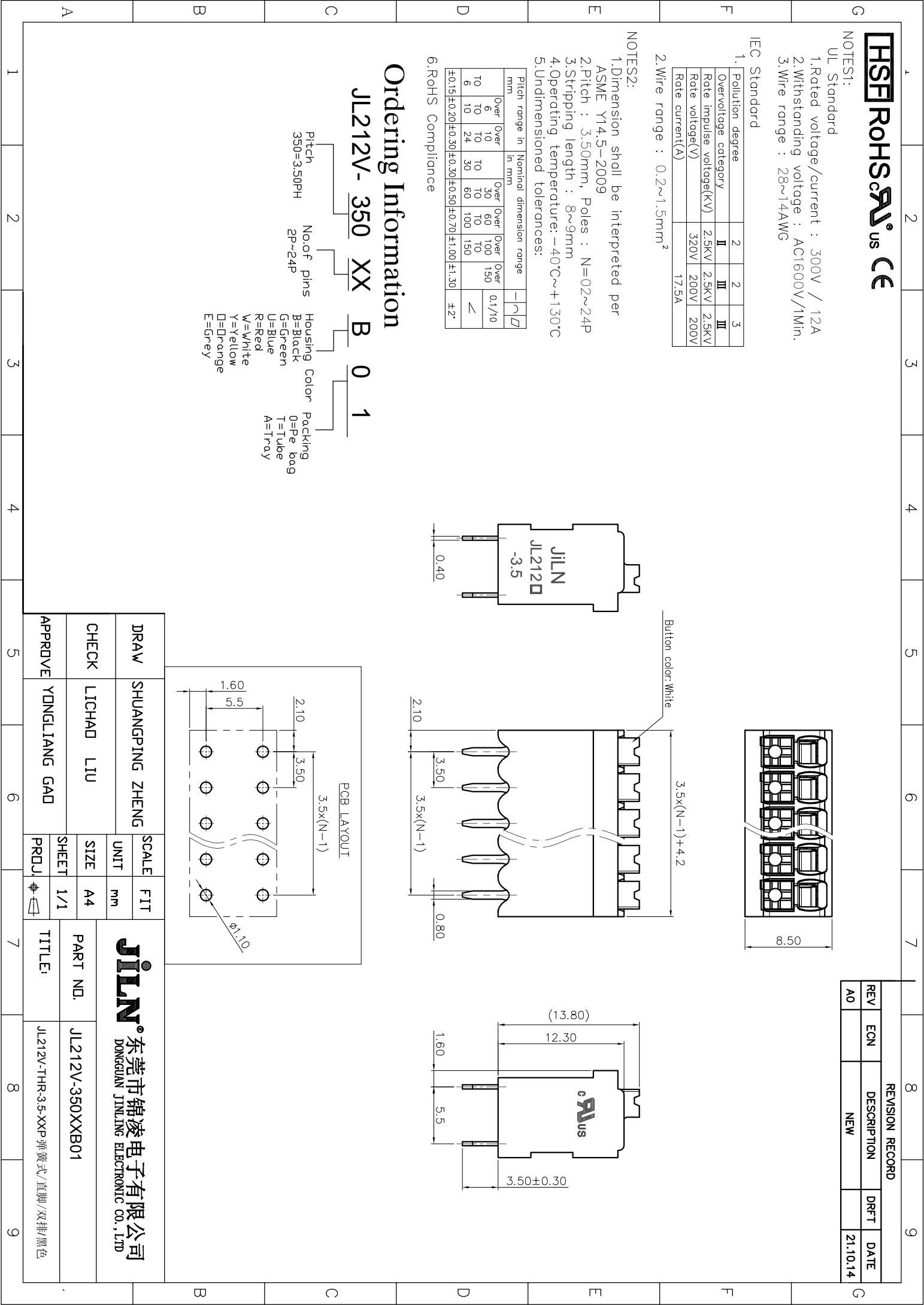
REVISION RECORD				
REV	ECN	DESCRIPTION	DRFT	DATE
A0		NEW		21.10.14

DRAW	SHUANGPING ZHENG
CHECK	LICHAD LIU
APPROVE	YONGLIANG GAO

**JILIN** 东莞市锦凌电子有限公司  
DONGGUAN JINLING ELECTRONIC CO., LTD

PART NO. JL212V-350XXB01

TITLE: JL212V-THR-3.5-XXP 弹簧式/直脚/双排/黑色



## X-ON Electronics

Largest Supplier of Electrical and Electronic Components

*Click to view similar products for [Fixed Terminal Blocks](#) category:*

*Click to view products by [JILN](#) manufacturer:*

Other Similar products are found below :

[MBE-1512](#) [MBE-1520](#) [MBE-154](#) [MBE-156](#) [MBES-156](#) [MH-2512](#) [MHE-132](#) [MHE-163](#) [MI-254 \(35\)](#) [MI-272](#) [MPT-275](#) [ELM10110G](#)  
[BA311TU](#) [BA411SU](#) [MV-253/NCNOC](#) [MV-254-D](#) [MV-255](#) [MV-493](#) [MVE-252](#) [MVE-253](#) [MVE-273](#) [MVEB-153](#) [1700096](#) [1705142](#)  
[1712417](#) [1713088](#) [1745195](#) [1760594](#) [1-796689-8](#) [1-796692-6](#) [1800114](#) [20020314-C121B01LF](#) [20020316-G041B01LF](#) [KP03215000J0G](#)  
[KP04215000J0G](#) [S451](#) [29.007](#) [29.116](#) [30.103](#) [30.106](#) [30.503](#) [30.608](#) [30.755](#) [30.853](#) [9872-0-00-15-00-00-33-0](#) [996750](#) [1706303](#) [1710052](#)  
[1712418](#) [1733868](#)