

NOTES1:

- UL Standard
- 1. Rated voltage/current : 300V / 70A
- 2. Withstanding voltage : AC1600V/1Min.
- 3. Wire range : 20~4AWG

IEC Standard

|                          |       |       |       |
|--------------------------|-------|-------|-------|
| 1. Pollution degree      | 2     | 2     | 3     |
| Overvoltage category     | II    | III   | III   |
| Rate impulse voltage(kV) | 8kV   | 8kV   | 8kV   |
| Rate voltage(V)          | 1000V | 1000V | 1000V |
| Rate current(A)          | 76A   |       |       |

2. Wire range : 0.2~16.0mm<sup>2</sup>

NOTES2:

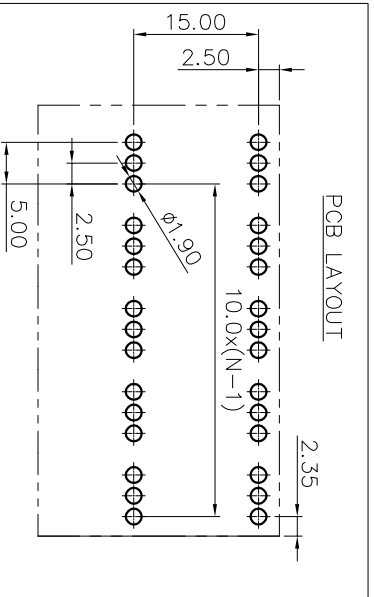
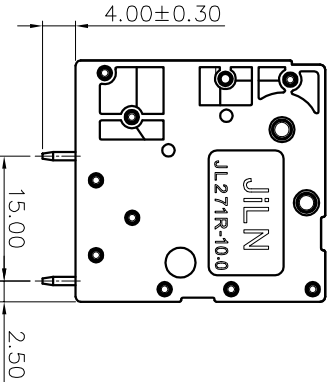
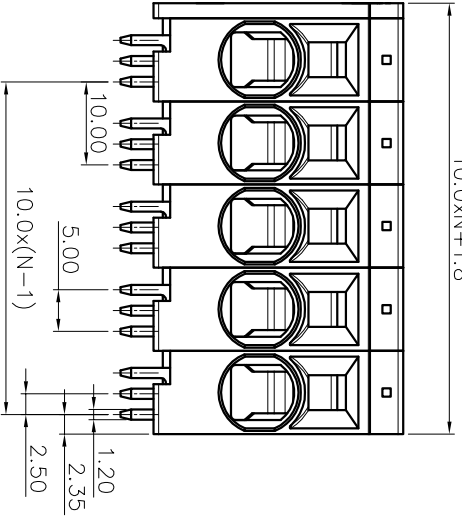
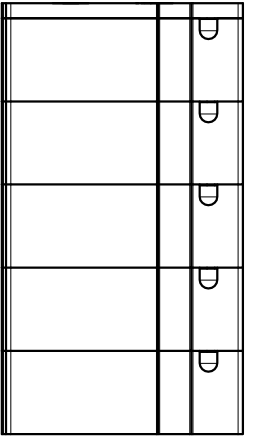
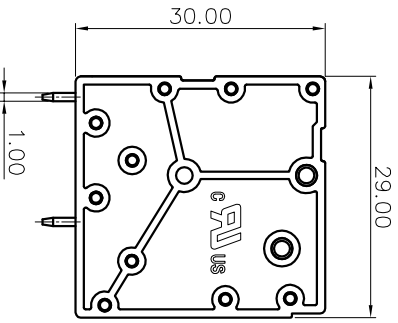
- 1. Dimension shall be interpreted per ASME Y14.5-2009
- 2. Stripping length : 17~18mm
- 3. Operating temperature: -40°C~+105°C
- 4. Undimensioned tolerances:
- 5. RoHS Compliance

| Pitch range in mm |    | Nominal dimension range in mm |    | Tolerance |     |
|-------------------|----|-------------------------------|----|-----------|-----|
| Over              | TO | Over                          | TO | Over      | TO  |
| 6                 | 10 | 30                            | 60 | 100       | 150 |
| 10                | 24 | 30                            | 60 | 100       | 150 |
| 15                | 20 | 50                            | 70 | 100       | 130 |
| 20                | 30 | 50                            | 70 | 100       | 130 |

# Ordering Information

JL271R - 100 XX G 0 1

Pitch 100=10.0PH  
 No. of pins 1P~24P  
 Housing Color B=Black G=Green U=Blue R=Red W=White Y=Yellow D=Orange E=Grey  
 Packing 0=Pe 1=Bo 9  
 T=Tube A=Tray



| REVISION RECORD |     |             |      |          |
|-----------------|-----|-------------|------|----------|
| REV             | ECN | DESCRIPTION | DRFT | DATE     |
| A0              |     | NEW         |      | 21.08.21 |

|         |                  |     |       |     |                 |                            |
|---------|------------------|-----|-------|-----|-----------------|----------------------------|
| DRAW    | SHUANGPING ZHENG |     | SCALE | FIT | PART NO.        | TITLE:                     |
|         | UNIT             | mm  |       |     |                 |                            |
| CHECK   | LICHAD LIU       |     | SIZE  | A4  | JL271R-100XXG01 | JL271R-10.0-XXP弹簧式/弯脚/双排绿色 |
|         | SHEET            | 1/1 |       |     |                 |                            |
| APPROVE | YONGLIANG GAO    |     | PRD   |     |                 |                            |

**JILIN** 东莞市锦凌电子有限公司  
 DONGGUAN JINLING ELECTRONIC CO., LTD

## X-ON Electronics

Largest Supplier of Electrical and Electronic Components

*Click to view similar products for [Fixed Terminal Blocks](#) category:*

*Click to view products by [JILN](#) manufacturer:*

Other Similar products are found below :

[MBE-1512](#) [MBE-1520](#) [MBE-154](#) [MBE-156](#) [MBES-156](#) [MH-2512](#) [MHE-132](#) [MHE-163](#) [MI-254 \(35\)](#) [MPT-275](#) [ELM10110G](#) [BA311TU](#)  
[BA411SU](#) [MV-254-D](#) [MV-255](#) [MV-493](#) [MVE-252](#) [MVE-253](#) [MVEB-153](#) [1705142](#) [1-796689-8](#) [1841320000](#) [S451](#) [29.007](#) [29.116](#) [30.204](#)  
[30.503](#) [30.756](#) [30.853](#) [9872-0-00-15-00-00-33-0](#) [996750](#) [1710052](#) [20020316-G071B01LF](#) [20020327-C061B01LF](#) [29590](#) [30.652](#) [30.710](#)  
[30.754](#) [30.757](#) [32.058](#) [37.206](#) [37.208](#) [37.507](#) [37.558](#) [38331-5812](#) [38331-8018](#) [38540-1910](#) [39.002](#) [MBE-1517](#) [MBE-153](#)