

## SPECIFICATIONS

Rated (额定参数): 300V, 1.5A  
 Dielectric strength (抗电强度): AC1500V/1 Minute  
 Insulation Resistance (绝缘电阻): 1000MΩ Min  
 Contact Resistance (接触电阻): 20mΩ Max  
 Screw Torque (扭矩): 0.40Nm (3.5lb.in)  
 Wire Range (线径): 12~24AWG  
 Strip length (剥线长度): 4.5~5mm  
 Temp. range (操作温度): -40°C~+105°C  
 MAX Soldering (瞬时温度): +250°C, 5s

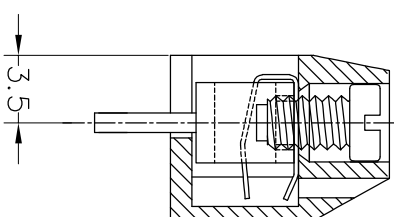
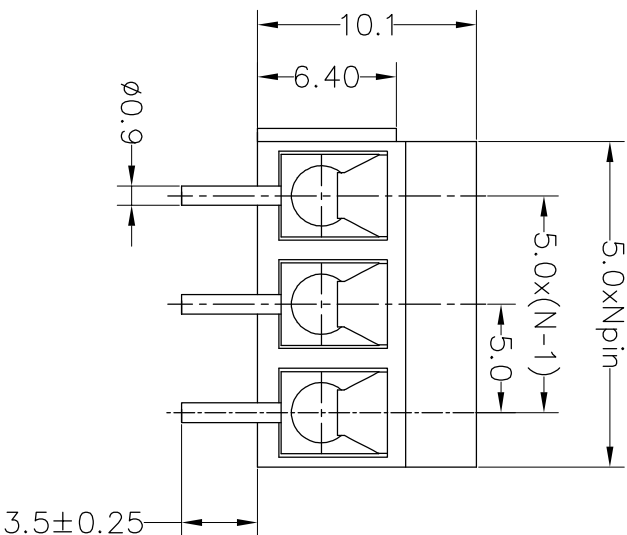
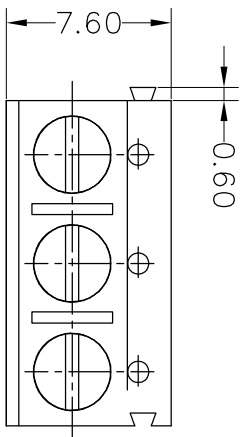
Housing Material (塑件): PA66 (UL94 V-0)  
 Contact (端子): Brass, Tin plating (黄铜镀锡)  
 Wire protector (弹片): Bronze (磷铜), Ni plating (镀镍)  
 Screw (螺丝): M2.5, Steel, Zinc plating (钢 镀锌)

PITCH RANGE		NOMINAL DIMENSION RANGE							
IN MM		IN MM							
OVER	10	OVER	30	OVER	60	OVER	100	OVER	150
TO	6	TO	10	TO	30	TO	60	TO	100
6	10	24	30	60	100	150	150	150	150
±0.10	±0.15	±0.25	±0.30	±0.30	±0.50	±0.70	±1.00	±1.00	±1.00

## Ordering Information

JL 301 - 500 XX X X 1

Pitch 500=5.0PH  
 No. of pins 2P, 3P, 4P~24P  
 Housing Color  
 B=Black  
 G=Green  
 U=Blue  
 R=Red  
 W=White  
 Y=Yellow  
 O=Orange  
 F=Grey  
 Packing  
 0=Pe bag  
 T=Tube  
 A=Tray



REV	DATE	MODIFICATION DESCRIPTION	CHANGE	APPROVE	BEN	17.01.04	SCALE	FIT	TITLE:
A0	2017.01.04	NEW DRAWING		CHECK			mm	A4	JL301-500XXXX1
1									5.00mm Terminal Blocks Female 180°

**JILIN** 深圳市锦凌电子有限公司  
 SHENZHEN JINLING ELECTRONIC CO.,LTD  
 Tel: 86-755-2997-5806/5802 Fax: 86-755-2997-5992

## X-ON Electronics

Largest Supplier of Electrical and Electronic Components

*Click to view similar products for [Fixed Terminal Blocks](#) category:*

*Click to view products by [JILN](#) manufacturer:*

Other Similar products are found below :

[MBE-1512](#) [MBE-1520](#) [MBE-154](#) [MBE-156](#) [MBES-156](#) [MH-2512](#) [MHE-132](#) [MHE-163](#) [MI-254 \(35\)](#) [MI-272](#) [MPT-275](#) [ELM10110G](#)  
[BA311TU](#) [BA411SU](#) [MV-253/NCNOC](#) [MV-254-D](#) [MV-255](#) [MV-493](#) [MVE-252](#) [MVE-253](#) [MVE-273](#) [MVEB-153](#) [1700096](#) [1705142](#)  
[1712417](#) [1713088](#) [1745195](#) [1760594](#) [1-796689-8](#) [1-796692-6](#) [1800114](#) [20020314-C121B01LF](#) [20020316-G041B01LF](#) [KP03215000J0G](#)  
[KP04215000J0G](#) [S451](#) [29.007](#) [29.116](#) [30.103](#) [30.106](#) [30.503](#) [30.608](#) [30.755](#) [30.756](#) [30.853](#) [9872-0-00-15-00-00-33-0](#) [996750](#) [1706303](#)  
[1710052](#) [1712418](#)