

## SPECIFICATIONS

Rated (额定参数): 300V, 1.5A  
 Dielectric strength (抗电强度): AC1500V/1 Minute  
 Insulation Resistance (绝缘电阻): 1000MΩ Min  
 Contact Resistance (接触电阻): 20mΩ Max  
 Screw Torque (扭矩): 0.40Nm (3.5lb.in)  
 Wire Range (线径): 12~24AWG  
 Strip length (剥线长度): 4.5~5mm  
 Temp. range (操作温度): -40°C~+105°C  
 MAX Soldering (瞬时温度): +250°C, 5s

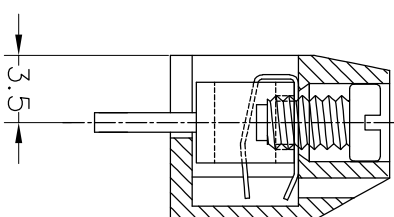
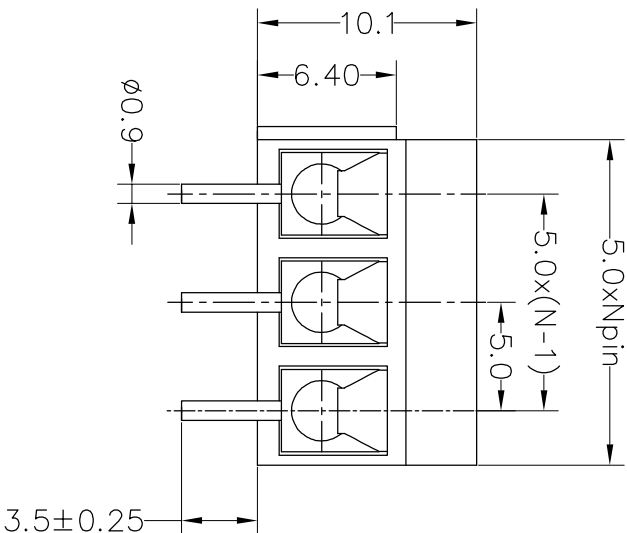
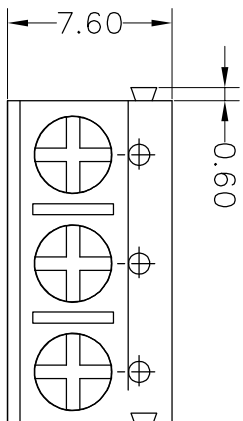
Housing Material (塑件): PA66 (UL94 V-0)  
 Contact (端子): Brass, Tin plating (黄铜镀锡)  
 Wire protector (弹片): Bronze (磷铜), Ni plating (镀镍)  
 Screw (螺丝): M2.5, Steel, Zinc plating (钢, 镀锌)

PITCH RANGE	NOMINAL DIMENSION RANGE					
	IN MM	IN MM	IN MM	IN MM	IN MM	IN MM
OVER 6 TO 10	OVER 10 TO 24	OVER 30 TO 60	OVER 60 TO 100	OVER 100 TO 150	OVER 150 TO 150	OVER 150 TO 150
±0.10	±0.15	±0.25	±0.30	±0.30	±0.50	±0.70

## Ordering Information

JL 301 - 500 XX X X 2

Pitch 500=5.0PH  
 No. of pins 2P, 3P, 4P~24P  
 Housing Color B=Black, G=Green, U=Blue, R=Red, W=White, Y=Yellow, O=Orange, E=Grey  
 Packing 0=Pe, bog, T=Tube, A=Troy  
 Screw 2=十字 Screw



**JILIN** 深圳市锦凌电子有限公司  
 SHENZHEN JINLING ELECTRONIC CO.,LTD  
 Tel: 86-755-2997-5806/5802 Fax: 86-755-2997-5992

PART NO. JL301-500XXXXX2

TITLE: 5.00mm Terminal Blocks Female 180°

REV	DATE	MODIFICATION DESCRIPTION	CHANGE
A0	2017.09.12	NEW DRAWING	

OPERATION	SCALE	FIT
XX	±0.30	
X:XX	±0.20	CHECK
X:XXX	±0.10	
Angle	±3°	
DIM		
TOL		

DRAW	BEN	17.09.12	SCALE	UNIT	mm
			A4	SIZE	
			1/1	SHEET	
				PROJ.	

1	2	3	4	5	6	7	8	9
---	---	---	---	---	---	---	---	---

## **X-ON Electronics**

Largest Supplier of Electrical and Electronic Components

*Click to view similar products for [Fixed Terminal Blocks](#) category:*

*Click to view products by [JILN](#) manufacturer:*

Other Similar products are found below :

[00175550202](#) [MBE-1512](#) [MBE-1520](#) [MBE-154](#) [MBE-156](#) [MBES-1510](#) [MBES-153](#) [MBES-156](#) [MH-2512](#) [MHE-132](#) [MHE-133](#) [MHE-163](#)  
[MI-254 \(35\)](#) [MI-272](#) [8739](#) [880507](#) [880508](#) [MPT-275](#) [1546551-6](#) [ELM023100](#) [ELM10110G](#) [ELVD12100](#) [BA311TU](#) [BA411SU](#) [MV-152](#)  
[MV-253/NCNOC](#) [MV-254-D](#) [MV-255](#) [MV-462](#) [MV-472](#) [MV-493](#) [MVE-252](#) [MVE-253](#) [MVE-258](#) [MVE-273](#) [MVEB-153](#) [1700096](#)  
[1702246](#) [1705142](#) [1712417](#) [1713020](#) [1713088](#) [1776118-2](#) [1790852](#) [1-796689-8](#) [1-796692-6](#) [1800001](#) [1800114](#) [1823215](#) [1838462](#)