

SPECIFICATIONS

Rated(额定参数): 300V,10A
 Dielectric strength(抗电强度): AC1500V/1 Minute
 Insulation Resistance(绝缘电阻):1000MΩ Min
 Contact Resistance(接触电阻):20mΩ Max
 Temp. range(操作温度): -40℃~+105℃
 MAX Soldering(瞬时温度):+250°C,5s

Housing Material(塑件): PA66 (UL94 V-0)
 Contact(端子): Brass, Tin plating(黄铜镀锡)

| PITCH RANGE IN MM | NOMINAL DIMENSION RANGE | | | | | |
|----------------------|-------------------------|------------|------------|------------|------------|------------|
| | OVER IN | OVER MM | OVER IN | OVER MM | OVER IN | OVER MM |
| TO 6 | 10 | TO 30 | 60 | TO 100 | 150 | OVER 150 |
| TO 10 | 24 | TO 30 | 60 | TO 100 | 150 | OVER 150 |
| ±0.10 | ±0.15 | ±0.25 | ±0.30 | ±0.30 | ±0.50 | ±0.70 |
| | | | | | | ±1.00 |

Ordering Information

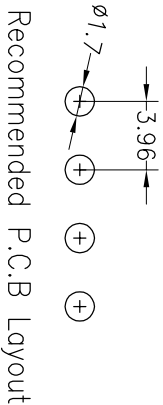
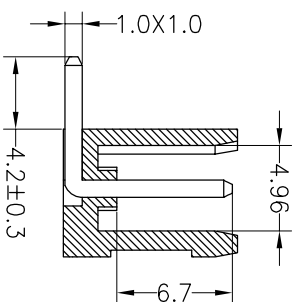
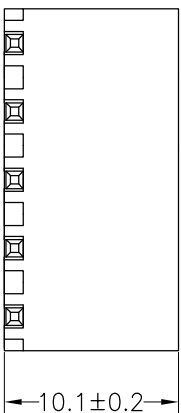
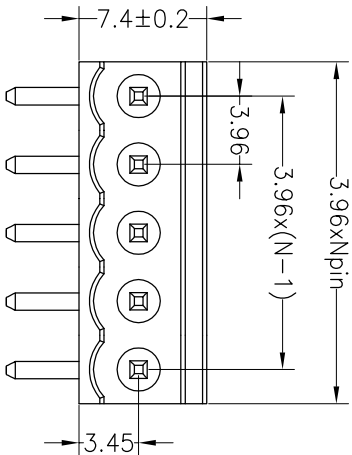
JL 396R - 396 XX X X 1

Pitch
396=3.96PH

No.of pins
2P~20P

Housing Color
B=Black
G=Green
U=Blue
R=Red
W=White
Y=Yellow
O=Orange
E=Grey

Packing
O=Pe bog
A=Tray
T=Tube



| OPERATION | | DRAW | | SCALE | | FIT | | PART NO. | |
|--------------------------|------------|-------------|----------|-------|----|-------|-----|---------------------------|--|
| XX | ±0.20 | yiyusheng | 19.05.05 | UNIT | mm | 1/1 | 1/1 | JL396R-396XXXXX1 | |
| X:XX | ±0.20 | CHECK | | SIZE | A4 | SHEET | 1/1 | 3.96mm Pitch Male | |
| X:XXX | ±0.10 | APPROVE | | PROU. | | | | Pluggable Terminal Blocks | |
| Angle | ±3° | | | | | | | | |
| DIM | TOL | | | | | | | | |
| CHANGE | | | | | | | | | |
| MODIFICATION DESCRIPTION | | | | | | | | | |
| DATE | | | | | | | | | |
| REV | | | | | | | | | |
| A0 | 2019.05.05 | NEW DRAWING | | | | | | | |

JILIN 深圳市锦凌电子有限公司
 SHENZHEN JINLING ELECTRONIC CO.,LTD
 Tel: 86-755-2997-5806/5802 Fax: 86-755-2997-5992

X-ON Electronics

Largest Supplier of Electrical and Electronic Components

Click to view similar products for [Pluggable Terminal Blocks](#) category:

Click to view products by [JILN](#) manufacturer:

Other Similar products are found below :

[57.510.0053](#) [MC 1.5/ 6-ST-3.5 GY AU](#) [ET02015000J0G](#) [860505](#) [860516](#) [860810](#) [GBPACX-12](#) [93.731.4953.0](#) [PV05-5,08-K](#) [PVP03-3,50](#)
[PVS02-5,00](#) [1-1986160-3](#) [1377680000](#) [1531000000](#) [1546228-5](#) [ELFP03110](#) [ELFP10210](#) [ELFT07250](#) [ELVD12100](#) [ELVF09400](#)
[ELVP03100](#) [ELXH071G0E](#) [1700410](#) [1702246](#) [1705229](#) [1714537](#) [1717806](#) [1719600](#) [1728941](#) [1734692](#) [1740291](#) [1740628](#) [1740990](#)
[1746952](#) [1752865](#) [1754115](#) [1754144](#) [1756913](#) [1760051](#) [1760336](#) [1765111](#) [1776388](#) [1777701](#) [1783410](#) [1800227](#) [1801080](#) [1809474](#)
[1812513](#) [1823215](#) [1836066](#)