

NOTES:

UL Standard

1. Rated voltage/current : 300V / 30A
2. Withstanding voltage : AC1600V/1Min.
3. Torque value : M3, 4.43Lb.in
4. Wire range : 30~10AWG

IEC Standard

1. Pollution degree **2**
- Overvoltage category **III**
- Rate impulse voltage(KV) 4KV
- Rate voltage(V) 400V
- Rate current(A) 32A
2. Torque value : M3 , 0.5N·m
3. Wire range : 0.2~4.0mm<sup>2</sup>

NOTES2:

1. Dimension shall be interpreted per ASME Y14.5-2009
2. Pitch : 7.62mm, Poles : N=02~12P
3. Stripping length : 8~9mm
4. Operating temperature : -40°C~+105°C
5. Undimensioned tolerances:

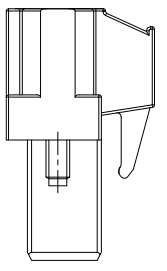
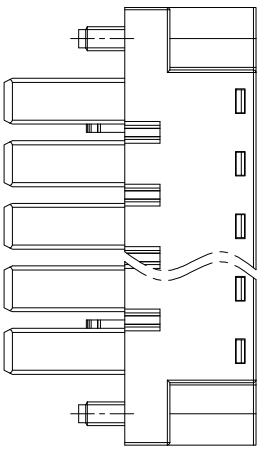
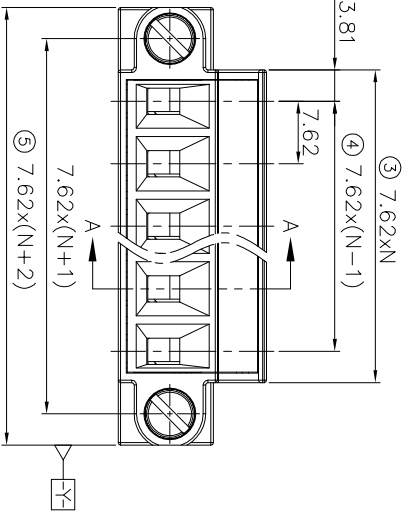
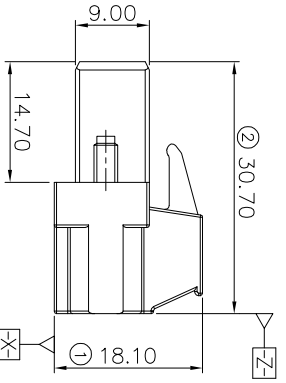
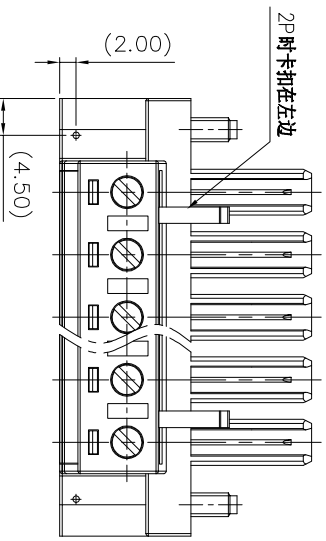
Pitch range in mm		Nominal dimension range in mm		Over		Over	
mm	mm	mm	mm	mm	mm	mm	mm
6	10	30	60	100	150	0.1/10	
TO	TO	TO	TO	TO	TO	≤	
6	10	24	30	60	100	150	
±0.15	±0.20	±0.30	±0.30	±0.50	±0.70	±1.00	±1.30
							±2°

6. RoHS Compliance

Ordering Information

JL5EDGKM-762 XX G 0 1

Pitch 762=7.62PH No.of Pins 2P,3P,4P~12P Housing Color B=Black G=Green U=Blue R=Red V=White Y=Yellow D=Orange E=Grey Packing 0=Pe bag T=Tube A=Trey



REVISION RECORD				
REV	ECN	DESCRIPTION	DRFT	DATE
A0		NEW		20.12.02

ITEM	NAME OF PART	MATERIAL	NOTES
7	Screw	Steel	M3/Zn Plated
6	Screw	Steel	M3/Zn Plated
5	Cage	Copper alloy	M3/Ni Plated
4	Spring	Stainless Steel	
3	Clamp	Copper alloy	Sn Plated
2	Cover	PA66	UL94V-0
1	Housing	PA66	UL94V-0

SCALE	FIT
UNIT mm	
SIZE A4	
SHEET 1/1	
PRDJ	

**JIN** 东莞市锦凌电子有限公司  
DONGGUAN JINLING ELECTRONIC CO., LTD

PART NO. JL5EDGKM-762XXG01

TITLE: JL5EDGKM-7.62-XXP 插拔式母座/绿色

## X-ON Electronics

Largest Supplier of Electrical and Electronic Components

*Click to view similar products for [Pluggable Terminal Blocks](#) category:*

*Click to view products by [JILN](#) manufacturer:*

Other Similar products are found below :

[57.510.0053](#) [MC 1.5/ 6-ST-3.5 GY AU](#) [ET02015000J0G](#) [734-302](#) [860505](#) [860516](#) [860810](#) [GBPACX-12](#) [93.731.4953.0](#) [PV05-5,08-K](#)  
[PVP03-3,50](#) [PVS02-5,00](#) [1-1986160-3](#) [1377680000](#) [1531000000](#) [1546228-5](#) [ELFP03110](#) [ELFP10210](#) [ELFT07250](#) [ELVD12100](#)  
[ELVF09400](#) [ELVP03100](#) [ELXH071G0E](#) [1700410](#) [1702246](#) [1705229](#) [1714537](#) [1717806](#) [1719600](#) [1728941](#) [1734692](#) [1740291](#) [1740628](#)  
[1740990](#) [1746952](#) [1752865](#) [1754115](#) [1754144](#) [1756913](#) [1760051](#) [1760336](#) [1765111](#) [1776388](#) [1777701](#) [1783410](#) [1800227](#) [1801080](#)  
[1809474](#) [1812513](#) [1823215](#)