

NOTES:

UL Standard

1. Rated voltage/current : 300V / 30A
2. Withstanding voltage : AC1600V/1Min.
3. Torque value : M3, 4.43Lb.in
4. Wire range : 30~10AWG

IEC Standard

1. Pollution degree **2**
 - Overvoltage category **III**
 - Rate impulse voltage(KV) 4KV
 - Rate voltage(V) 400V
 - Rate current(A) 32A
2. Torque value : M3 , 0.5N·m
 3. Wire range : 0.2~4.0mm²

NOTES2:

1. Dimension shall be interpreted per ASME Y14.5-2009
2. Pitch : 7.62mm, Poles : N=02~12P
3. Stripping length : 8~9mm
4. Operating temperature : -40°C~+105°C
5. Undimensioned tolerances:

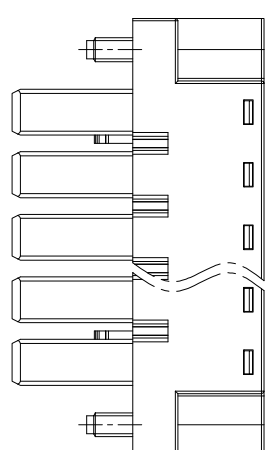
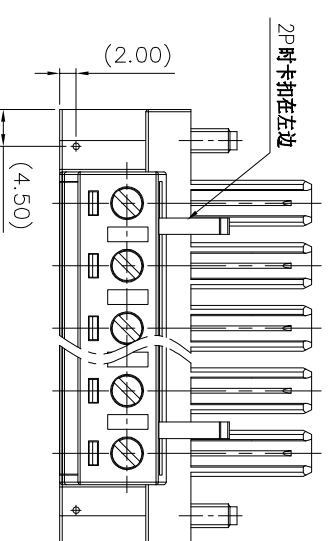
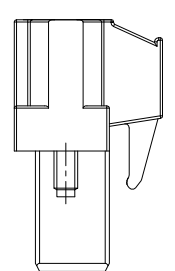
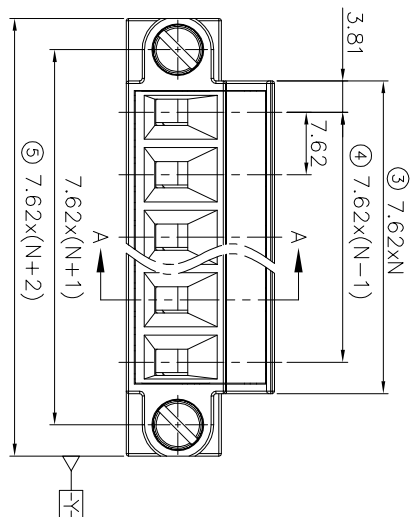
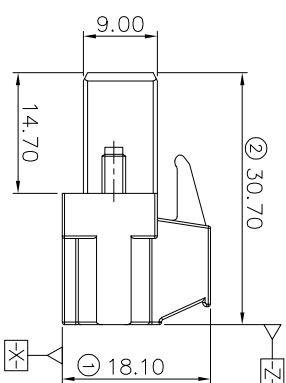
Pitch range in mm		Nominal dimension range in mm		Over		Over	
mm	mm	mm	mm	mm	mm	mm	mm
6	10	30	60	100	150	0.1/10	
TO	TO	TO	TO	TO	TO	≤	
6	10	24	30	60	100	150	
±0.15	±0.20	±0.30	±0.30	±0.50	±0.70	±1.00	±1.30
							±2°

6. RoHS Compliance

Ordering Information

JL5EDGKM-762 XX G 0 1

Pitch 762=7.62PH No.of. Pins 2P,3P,4P~12P Housing Color B=Black G=Green U=Blue R=Red Y=White V=Yellow D=Orange E=Grey Packing 0=Pe bag T=Tube A=Trey



ITEM	NAME OF PART	MATERIAL	NOTES
7	Screw	Steel	M3/Zn Plated
6	Screw	Steel	M3/Zn Plated
5	Cage	Copper alloy	M3/Ni Plated
4	Spring	Stainless Steel	
3	Clamp	Copper alloy	Sn Plated
2	Cover	PA66	UL94V-0
1	Housing	PA66	UL94V-0

SCALE	FIT
UNIT mm	
SIZE A4	
SHEET 1/1	
PRD J	

jiLN 东莞市锦凌电子有限公司
DONGGUAN JINLING ELECTRONIC CO., LTD

PART NO. JL5EDGKM-762XXG01

TITLE: JL5EDGKM-7.62-XXP 插拔式母座/绿色

REVISION RECORD				
REV	ECN	DESCRIPTION	DRFT	DATE
A0		NEW		20.12.02

X-ON Electronics

Largest Supplier of Electrical and Electronic Components

Click to view similar products for [Pluggable Terminal Blocks](#) category:

Click to view products by [JILN](#) manufacturer:

Other Similar products are found below :

[57.510.0053](#) [721-104/026-047](#) [721-204/026-045](#) [MC 1.5/ 6-ST-3.5 GY AU](#) [ET02015000J0G](#) [860505](#) [860516](#) [860810](#) [GBPACX-12](#)
[93.731.4953.0](#) [PVP03-3,50](#) [PVS02-5,00](#) [1-1986160-3](#) [1377680000](#) [1531000000](#) [1546228-5](#) [ELFP03110](#) [ELFP10210](#) [ELFT07250](#)
[ELVD12100](#) [ELVF09400](#) [ELXH071G0E](#) [1725220000](#) [1760336](#) [1855000000](#) [19346](#) [1946309](#) [1973592](#) [19892](#) [25.320.4053.1](#) [25.320.4553.9](#)
[25.320.4753.1](#) [25.320.5453.1](#) [25.340.0353.1](#) [25.340.1053.1](#) [25.345.3553.0M001](#) [25.640.3553.1](#) [SH02-5,08](#) [SH06-3,81](#) [SH08-5,08](#) [SH08-](#)
[5,08-K](#) [SH12-5,08](#) [SHS04-5,00](#) [30.303](#) [30.305](#) [30.306](#) [PHP09-5,08](#) [25.193.0453.0](#) [25.320.4653.1](#) [25.332.2453.1](#)