

NOTES1:

- UL Standard
- 1. Rated voltage/current : 300V / 30A
- 2. Withstanding voltage : AC1600V/1Min.
- 3. Torque value : M3 , 4.43lb.in
- 4. Wire range : 30~10AWG

IEC Standard

1. Pollution degree	2	2	3
Overvoltage category	II	III	III
Rate impulse voltage(kV)	6kV	6kV	6kV
Rate voltage(V)	1000V	1000V	690V
Rate current(A)	32A		

- 2. Torque value : M3 , 0.5N.m
- 3. Wire range : 0.2~4.0mm²/6mm²(sol)

NOTES2:

- 1. Dimension shall be interpreted per ASME Y14.5-2009
- 2. Pitch : 9.52mm, Poles : N=02~16P
- 3. Stripping length : 8~9mm
- 4. Operating temperature: -40°C~+105°C
- 5. Undimensioned tolerances:

Pitch range in mm		Nominal dimension range in mm		Tolerance	
Over	TO	Over	TO	Over	TO
6	10	30	60	100	150
10	24	60	100	150	<
±0.15±0.20		±0.30±0.50±0.70±1.00±1.30		±2°	

6. RoHS Compliance

Ordering Information

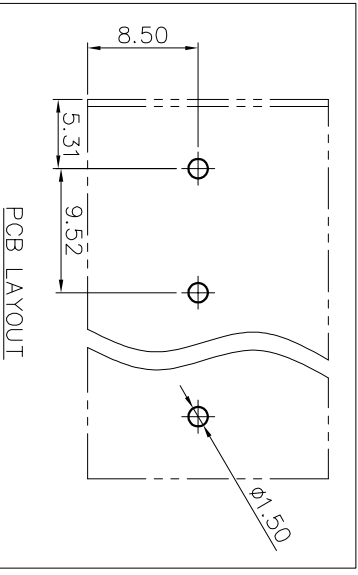
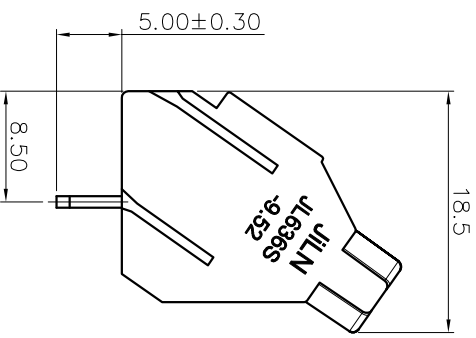
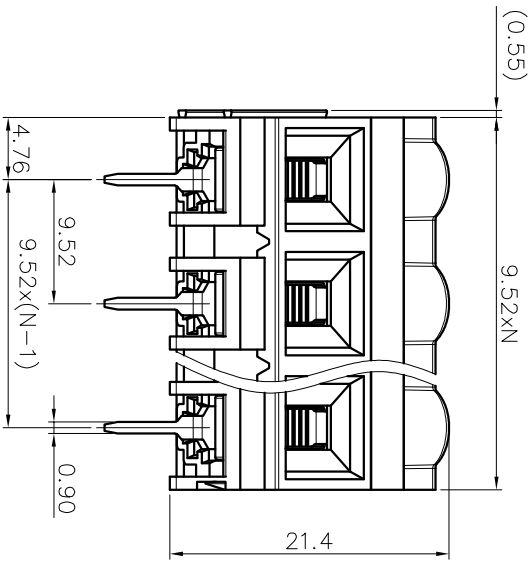
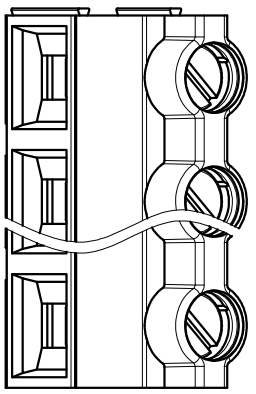
JL636S - 952 XX G 0 1

Pitch
952=9.52PH

No. of pins
2P, 3P, 4P~24P

Housing Color
B=Black
G=Green
U=Blue
R=Red
W=White
Y=Yellow
D=Orange
E=Grey

Packaging
0=Pe bag
T=Tube
A=Tray



REVISION RECORD			
REV	ECN	DESCRIPTION	DRFT DATE
A		新发行	Z.S.P 22.6.24

DRAW	SHUANGPING ZHENG	SCALE	FIT	<p>JIN 东莞市锦凌电子有限公司 DONGGUAN JINLING ELECTRONIC CO., LTD</p>
CHECK	LICHAD LIU	UNIT	mm	
APPROVE	YONGLIANG GAO	SIZE	A4	
		SHEET	1/1	PART NO.
		PRD		JL636S-952XXG01
TITLE:				JL636S-9.52-XXP螺钉式端子台/绿色

X-ON Electronics

Largest Supplier of Electrical and Electronic Components

Click to view similar products for [Fixed Terminal Blocks](#) category:

Click to view products by [JILN](#) manufacturer:

Other Similar products are found below :

[MBE-1512](#) [MBE-1520](#) [MBE-154](#) [MBE-156](#) [MBES-156](#) [MH-2512](#) [MHE-132](#) [MHE-163](#) [MI-254 \(35\)](#) [MPT-275](#) [ELM10110G](#) [BA311TU](#)
[BA411SU](#) [MV-254-D](#) [MV-255](#) [MV-493](#) [MVE-252](#) [MVE-253](#) [MVEB-153](#) [1705142](#) [1-796689-8](#) [1841320000](#) [S451](#) [29.007](#) [29.116](#) [30.204](#)
[30.503](#) [30.756](#) [30.853](#) [9872-0-00-15-00-00-33-0](#) [996750](#) [1710052](#) [20020316-G071B01LF](#) [20020327-C061B01LF](#) [29590](#) [30.652](#) [30.710](#)
[30.754](#) [30.757](#) [32.058](#) [37.206](#) [37.208](#) [37.507](#) [37.558](#) [38331-5812](#) [38331-8018](#) [38540-1910](#) [39.002](#) [MBE-1517](#) [MBE-153](#)