

SPECIFICATIONS

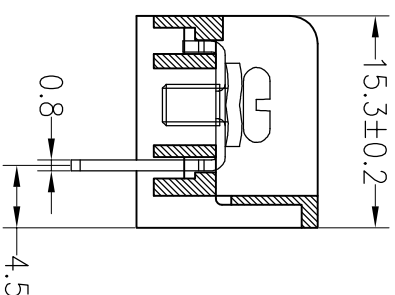
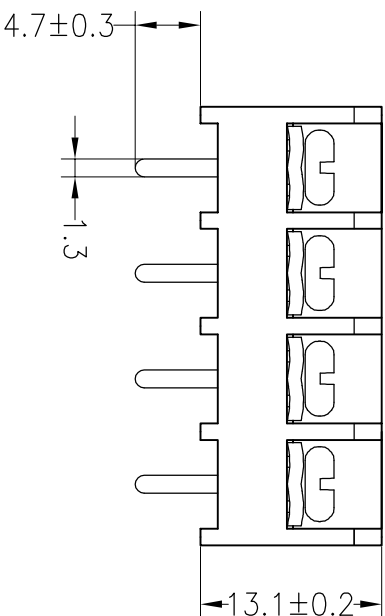
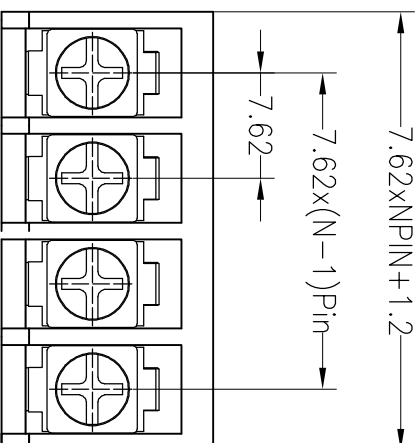
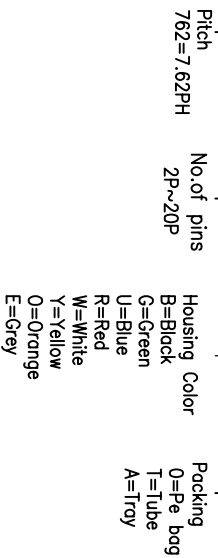
Rated(额定参数): 300V,20A
 Dielectric strength(抗电强度): AC2000V/1 Minute
 Insulation Resistance(绝缘电阻):1000MΩ Min
 Contact Resistance(接触电阻):20mΩ Max
 Screw Torque(扭矩): 0.8Nm (7.02Lb.in)
 Wire Range(线径):14~22AWG
 Temp. range(操作温度): -40℃~+105℃
 MAX Soldering(瞬时温度):+250℃,5s

Housing Material(塑件): PA66 (UL94 V-0)
 Contact(端子): Brass, Tin plating(黄铜镀锡)
 Screw (螺丝): M3.5, Steel, Ni plating(钢,镀锌)

| PITCH RANGE IN MM | NOMINAL DIMENSION RANGE IN MM | | | | | |
|----------------------|----------------------------------|------------|------------------|------------|------------|--------------------------|
| | OVER 6 | OVER 10 | OVER TO 30 | OVER 30 | OVER 60 | OVER 100 TO 150 |
| TO 6 | TO 10 | TO 24 | TO 30 | TO 60 | TO 100 | TO 150 |
| ±0.10 | ±0.15 | ±0.25 | ±0.30 | ±0.30 | ±0.50 | ±0.70 |
| | | | | | | ±1.00 |

Ordering Information

JL762 - 762 XX X X 1



| REV | DATE | MODIFICATION DESCRIPTION | CHANGE | DIM | TOL | APPROVE | SCALE | FIT | PROJ. | TITLE: |
|-----|------------|--------------------------|--------|-------|-----|---------|-------|-----|-------|-------------------------------|
| A0 | 2019.01.03 | NEW DRAWING | | Angle | ±3° | APPROVE | UNIT | A4 | 1/1 | JL762-762XXXX1 |
| 1 | | | | | | | mm | | | 7.62mm Terminal Blocks Female |

JILIN 深圳市锦凌电子有限公司
 SHENZHEN JINLING ELECTRONIC CO.,LTD
 Tel: 86-755-2997-5806/5802 Fax: 86-755-2997-5992

X-ON Electronics

Largest Supplier of Electrical and Electronic Components

Click to view similar products for [Barrier Terminal Blocks](#) category:

Click to view products by [JILN](#) manufacturer:

Other Similar products are found below :

[CTA-0103](#) [6PCR-02-008](#) [6PCR-05-008](#) [6PCR-08-008](#) [6PCR-21-006](#) [6PCV-06-008](#) [6PCV-10-009](#) [6PCV-15-008](#) [6STR-06-006](#) [6STR-08-006](#) [6STR-12-008](#) [6STR-14-008](#) [6STR-16-008](#) [6STR-17-008](#) [6STR-21-008](#) [6STR-25-008](#) [6STR-27-008](#) [6STV-03-006](#) [6STV-03-008](#) [6STV-04-006](#) [6STV-10-006](#) [6WWR-03](#) [6WWV-11-008](#) [6WWV-12-008](#) [6WWV-16-008](#) [7-1546701-0](#) [72212603](#) [72503-C](#) [73203](#) [76007](#) [7606-602LF](#) [77010-50](#) [796985-3](#) [796988-4](#) [7C1N08](#) [8-1437402-5](#) [8-1437402-7](#) [8-1546158-0](#) [870505](#) [870903](#) [8PCR-06-006](#) [8PCV-02-008](#) [8PCV-04-008](#) [8PCV-05-008](#) [8PCV-09-006](#) [8PCV-15-006](#) [8PCV-16-006](#) [8PCV-17-006](#) [8QCR-03-008](#) [8STV-04-006](#)