

**SPECIFICATIONS**

Rated(额定参数): 300V,25A  
 Dielectric strength(抗电强度): AC2000V/1 Minute  
 Insulation Resistance(绝缘电阻):1000MΩ Min  
 Contact Resistance(接触电阻):20mΩ Max  
 Screw Torque(扭矩): 1.2Nm (10.53Lb.in)  
 Wire Range(线径):12~22AWG  
 Temp. range(操作温度): -40°C~+105°C  
 MAX Soldering(瞬时温度):+250°C,5s

Housing Material(塑件): PA66 (UL94 V-0)  
 Contact(端子): Brass, Tin plating(黄铜镀锡)  
 Screw (螺丝): M4.0, Steel, Ni plating(钢,镀锌)

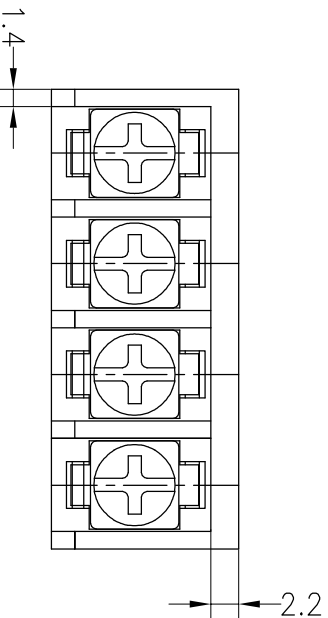
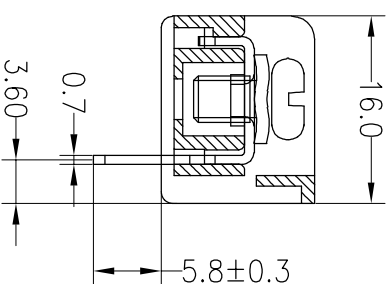
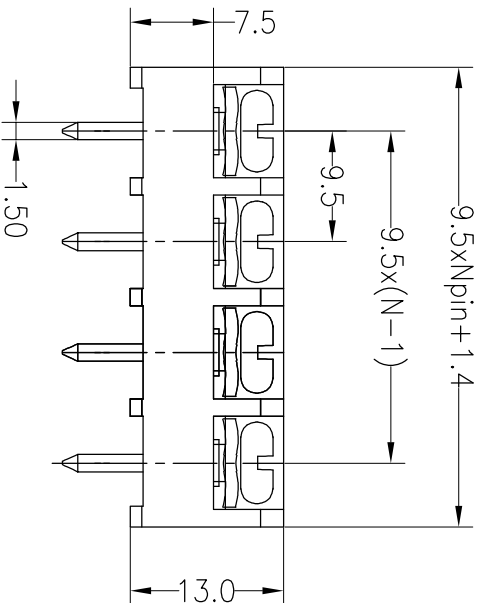
	PITCH RANGE		NOMINAL DIMENSION RANGE	
	IN	MM	IN	MM
TO 6	OVER 10	OVER 10	TO 30	OVER 60
TO 10	TO 24	TO 30	TO 60	TO 100
TO 10			TO 100	TO 150
±0.10	±0.15	±0.25	±0.30	±0.50
			±0.70	±1.00

**Ordering Information**

**JL950 - 950 XX X X 1**

Pitch 950=9.5PH  
 No. of pins 2P~24P  
 Housing Color  
 B=Black  
 G=Green  
 U=Blue  
 R=Red  
 W=White  
 Y=Yellow  
 O=Orange  
 F=Grey

Packing  
 O=Pe bog  
 T=Tube  
 A=Troy



REV		DATE	MODIFICATION DESCRIPTION	CHANGE	DIM	TOL	APPROVE	SCALE	FIT	TITLE:	
A0	2018.04.10	NEW DRAWING			Angle	±3°		UNIT	FIT	PART NO. JL950-950XXXX1	
OPERATION		DRAW			±0.30		Yiyusheng	mm		SHENZHEN JINLING ELECTRONIC CO.,LTD	
X:XX		X:XX			±0.20		2018.04.10	A4		Tel: 86-755-2997-5806/5802 Fax: 86-755-2997-5992	
X:XXX		X:XXX			±0.10			1/1		深圳市锦凌电子有限公司	
ANGLE		APPROVE						PROU.		9.50mm Barrier Terminal Blocks	

## X-ON Electronics

Largest Supplier of Electrical and Electronic Components

*Click to view similar products for [Barrier Terminal Blocks](#) category:*

*Click to view products by [JILN](#) manufacturer:*

Other Similar products are found below :

[CTA-0103](#) [6PCR-02-008](#) [6PCR-05-008](#) [6PCR-08-008](#) [6PCR-21-006](#) [6PCV-06-008](#) [6PCV-10-009](#) [6PCV-15-008](#) [6STR-06-006](#) [6STR-08-006](#) [6STR-12-008](#) [6STR-14-008](#) [6STR-16-008](#) [6STR-17-008](#) [6STR-21-008](#) [6STR-25-008](#) [6STR-27-008](#) [6STV-03-006](#) [6STV-03-008](#) [6STV-04-006](#) [6STV-10-006](#) [6WWR-03](#) [6WWV-11-008](#) [6WWV-12-008](#) [6WWV-16-008](#) [7-1546701-0](#) [72212603](#) [72503-C](#) [73203](#) [76007](#) [7606-602LF](#) [77010-50](#) [796985-3](#) [796988-4](#) [7C1N08](#) [8-1437402-5](#) [8-1437402-7](#) [8-1546158-0](#) [870505](#) [870903](#) [8PCR-06-006](#) [8PCV-02-008](#) [8PCV-04-008](#) [8PCV-05-008](#) [8PCV-09-006](#) [8PCV-15-006](#) [8PCV-16-006](#) [8PCV-17-006](#) [8QCR-03-008](#) [8STV-04-006](#)