



NOTES1:

UL Standard

1. Rated voltage/current : 300V / 16A
2. Withstanding voltage : AC1600V/1Min.
3. Ratings : Use group B,C 300V AC/DC
Use group D 600V AC/DC

IEC Standard

1. Pollution degree	2	2	3
Overvoltage category	II	III	III
Rate impulse voltage(KV)	6KV	6KV	6KV
Rate voltage(V)	1000V	630V	500V
Rate current(A)	20A		

NOTES2:

1. Dimension shall be interpreted per ASME Y14.5-2009
2. Pitch : 7.50mm, Poles : N=02~12P
3. Operating temperature: -40°C~+130°C
4. Undimensioned tolerances:

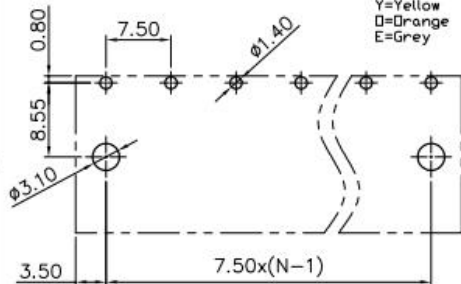
Pitch range in mm		Nominal dimension range in mm					
Over 6 TO 6	Over 10 TO 10	Over 30 TO 30	Over 60 TO 60	Over 100 TO 100	Over 150 TO 150	0.1/10	
±0.15	±0.20	±0.30	±0.50	±0.70	±1.00	±2'	

5. RoHS Compliance

Ordering Information

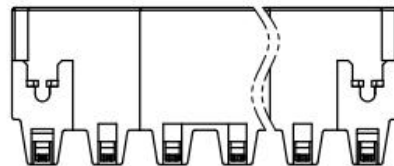
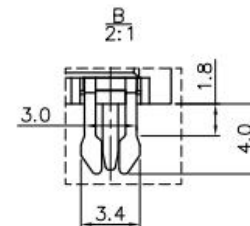
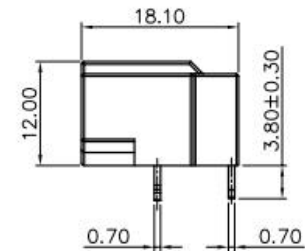
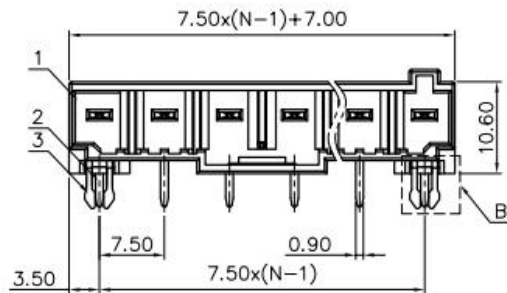
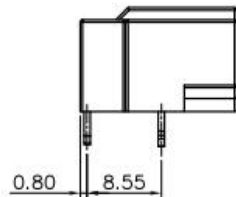
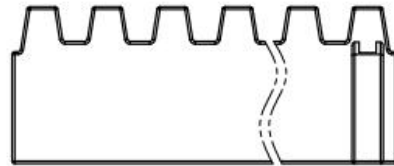
JL9EDGRC - 750 XX B 0 1

Pitch 750=7.50PH
No. of pins 2P~15P
Housing Color B=Black G=Green U=Blue R=Red V=White Y=Yellow O=Orange E=Grey
Packing 0=Pe bag A=Tray T=Tube



PCB LAYOUT

REVISION RECORD				
REV	ECN	DESCRIPTION	DRFT	DATE

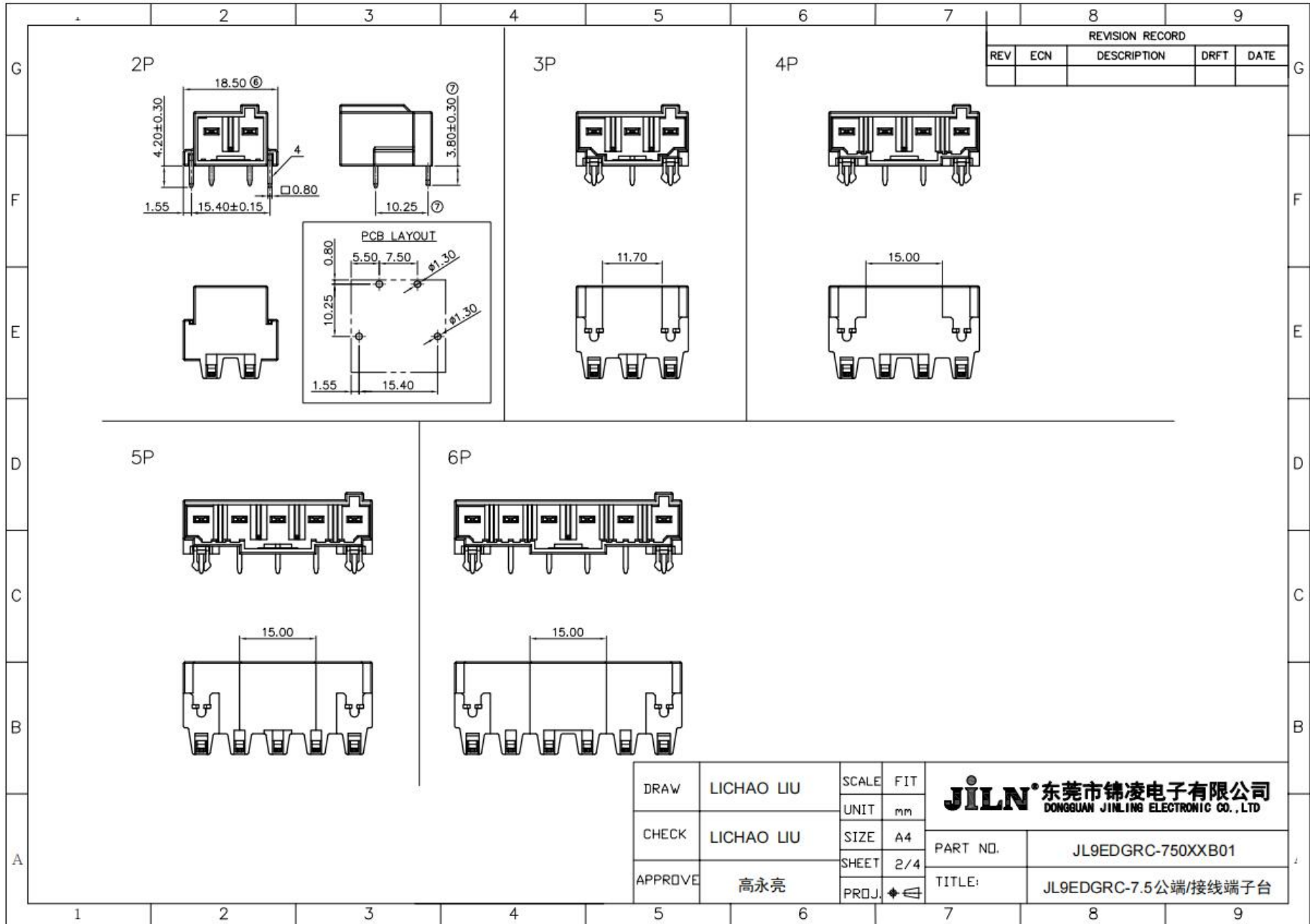


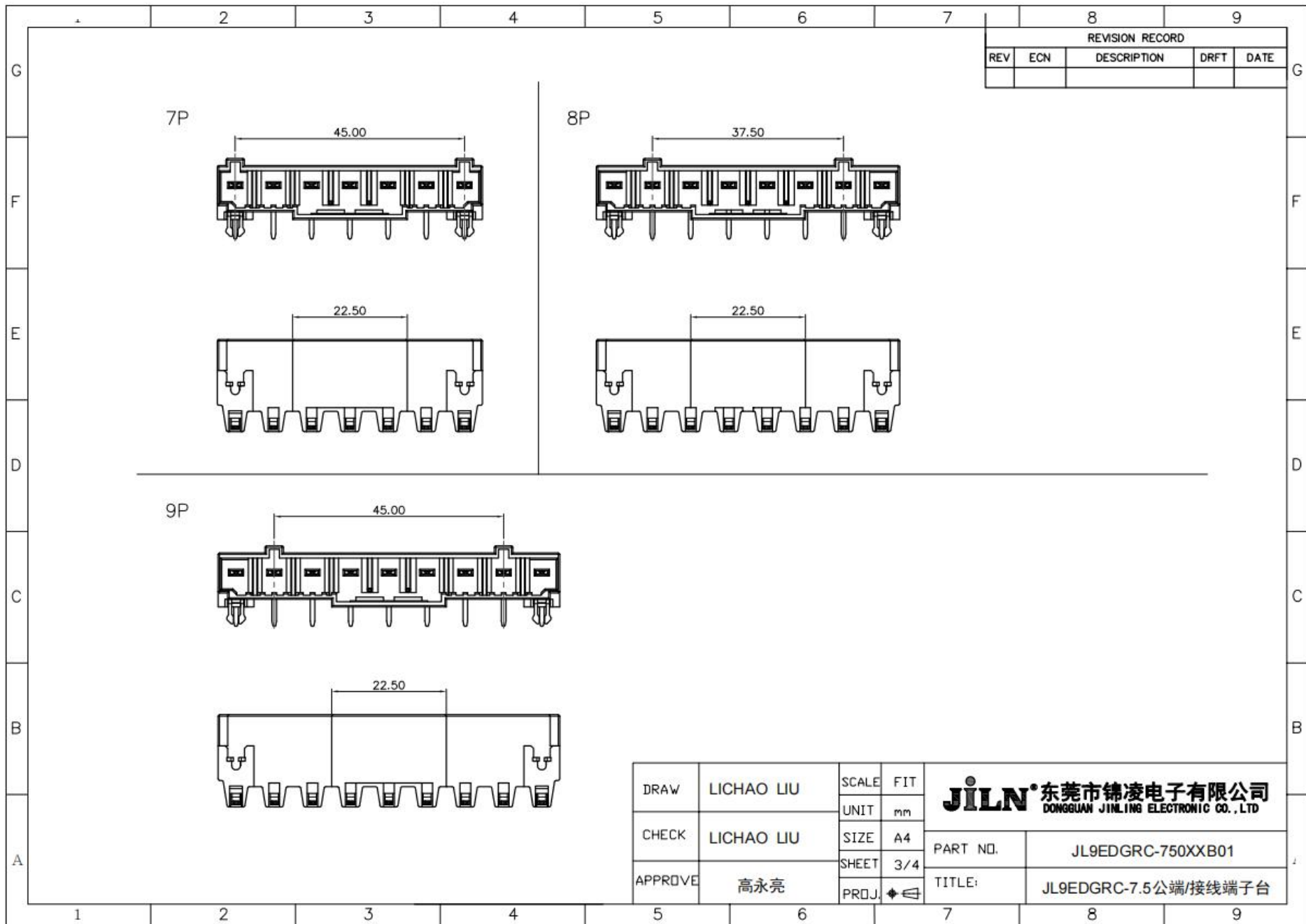
5	Clamp	Copper alloy	Sn Plated
4	Screw	Steel	M3/Zn Plated
3	Cage	Copper alloy	M3/Ni Plated
2	Spring	Stainless Steel	
1	Housing	PA66	UL94V-0
ITEM	NAME OF PART	MATERIAL	NOTES

DRAW	LICHAO LIU	SCALE	FIT
CHECK	LICHAO LIU	UNIT	mm
APPROVE	G. Y. L	SIZE	A4
		SHEET	1/1
		PROJ.	◆ ←

JILN 东莞市锦凌电子有限公司
DONGGUAN JINLING ELECTRONIC CO., LTD

PART NO.	JL9EDGRC-750XXB01
TITLE:	JL9EDGRC-7.5公端/接线端子台



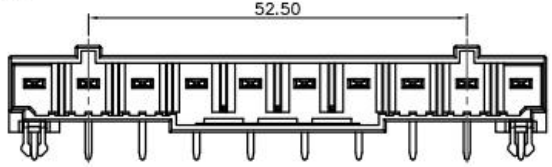


REVISION RECORD				
REV	ECN	DESCRIPTION	DRFT	DATE

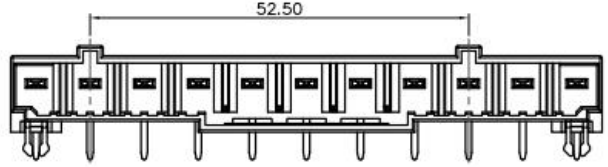
DRAW	LICHAO LIU	SCALE	FIT	JILN 东莞市锦凌电子有限公司 DONGGUAN JINLING ELECTRONIC CO., LTD	
CHECK	LICHAO LIU	UNIT	mm		
APPROVE	高永亮	SIZE	A4	PART NO.	JL9EDGRC-750XXB01
		SHEET	3/4	TITLE:	JL9EDGRC-7.5公端/接线端子台
		PRJ.	◆		

REVISION RECORD				
REV	ECN	DESCRIPTION	DRFT	DATE

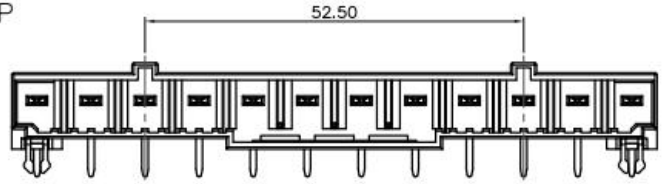
10P



11P



12P



DRAW	LICHAO LIU	SCALE	FIT
CHECK	LICHAO LIU	UNIT	mm
APPROVE	高永亮	SIZE	A4
		SHEET	4/4
		PROJ.	◆

JILN 东莞市锦凌电子有限公司
DONGGUAN JINLING ELECTRONIC CO., LTD

PART NO.	JL9EDGRC-750XXB01
TITLE:	JL9EDGRC-7.5公端/接线端子台

X-ON Electronics

Largest Supplier of Electrical and Electronic Components

Click to view similar products for [Pluggable Terminal Blocks](#) category:

Click to view products by [JILN](#) manufacturer:

Other Similar products are found below :

[57.510.0053](#) [MC 1.5/ 6-ST-3.5 GY AU](#) [ET02015000J0G](#) [860505](#) [860516](#) [860810](#) [GBPACX-12](#) [93.731.4953.0](#) [PV05-5,08-K](#) [PVP03-3,50](#)
[PVS02-5,00](#) [1-1986160-3](#) [1377680000](#) [1531000000](#) [1546228-5](#) [ELFP03110](#) [ELFP10210](#) [ELFT07250](#) [ELVD12100](#) [ELVF09400](#)
[ELVP03100](#) [ELXH071G0E](#) [1700410](#) [1746952](#) [1760336](#) [1800272](#) [1809474](#) [1855000000](#) [19346](#) [1946309](#) [1950227](#) [1973592](#) [19892](#)
[25.320.4053.1](#) [25.320.4553.9](#) [25.320.4753.1](#) [25.320.5453.1](#) [25.340.0353.1](#) [25.340.1053.1](#) [25.345.3553.0M001](#) [25.640.3553.1](#) [SH02-5,08](#)
[SH06-3,81](#) [SH08-5,08](#) [SH08-5,08-K](#) [SH12-5,08](#) [SHS04-5,00](#) [30.303](#) [30.305](#) [30.306](#)