



NOTES1:

UL Standard

- 1.Rated voltage/current : 300V / 16A
- 2.Withstanding voltage : AC1600V/1Min.
- 3.Ratings :Use group B,C 300V AC/DC
Use group D 600V AC/DC

IEC Standard

1. Pollution degree	2	2	3
Overvoltage category	II	III	III
Rate impulse voltage(KV)	6KV	6KV	6KV
Rate voltage(V)	1000V	630V	500V
Rate current(A)	20A		

NOTES2:

- 1.Dimension shall be interpreted per ASME Y14.5-2009
- 2.Pitch : 7.50mm, Poles : N=02~12P
- 3.Operating temperature: -40°C~+130°C
- 4.Undimensioned tolerances:

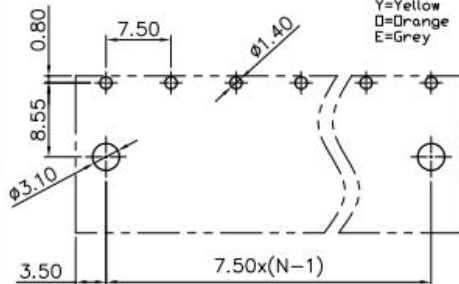
Pitch range in mm		Nominal dimension range in mm					
Over 6 TO 10	Over 10 TO 24	Over 30 TO 30	Over 60 TO 60	Over 100 TO 100	Over 150 TO 150	0.1/10	
±0.15	±0.20	±0.30	±0.50	±0.70	±1.00	±1.30	
						±2°	

5.RoHS Compliance

Ordering Information

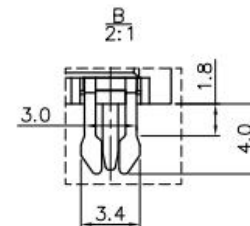
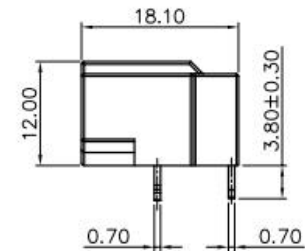
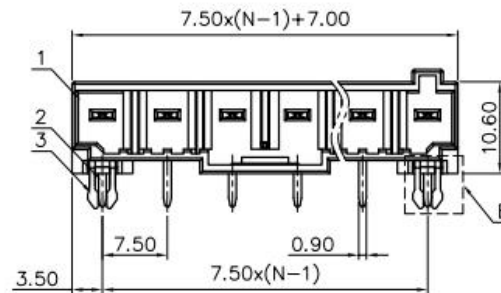
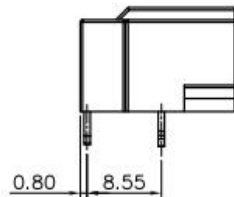
JL9EDGRC - 750 XX B 0 1

Pitch 750=7.50PH
No.of pins 2P~15P
Housing Color B=Black G=Green U=Blue R=Red V=White Y=Yellow O=Orange E=Grey
Packing 0=Pe bag A=Tray T=Tube



PCB LAYOUT

REVISION RECORD				
REV	ECN	DESCRIPTION	DRFT	DATE

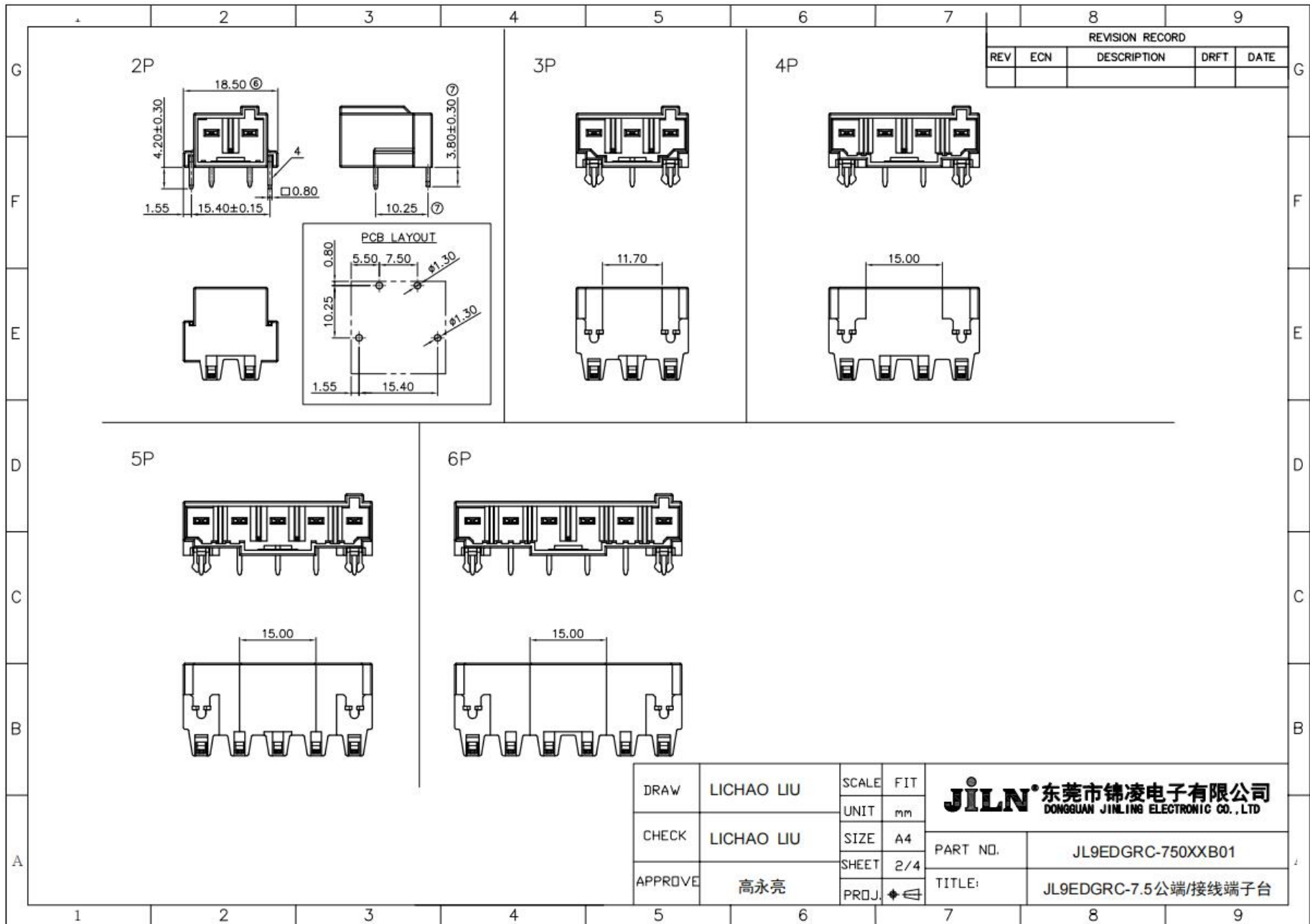


5	Clamp	Copper alloy	Sn Plated
4	Screw	Steel	M3/Zn Plated
3	Cage	Copper alloy	M3/Ni Plated
2	Spring	Stainless Steel	
1	Housing	PA66	UL94V-0
ITEM	NAME OF PART	MATERIAL	NOTES

DRAW	LICHAO LIU	SCALE	FIT
CHECK	LICHAO LIU	UNIT	mm
APPROVE	G. Y. L	SIZE	A4
		SHEET	1/1
		PROJ.	◆

JILN 东莞市锦凌电子有限公司
DONGGUAN JINLING ELECTRONIC CO.,LTD

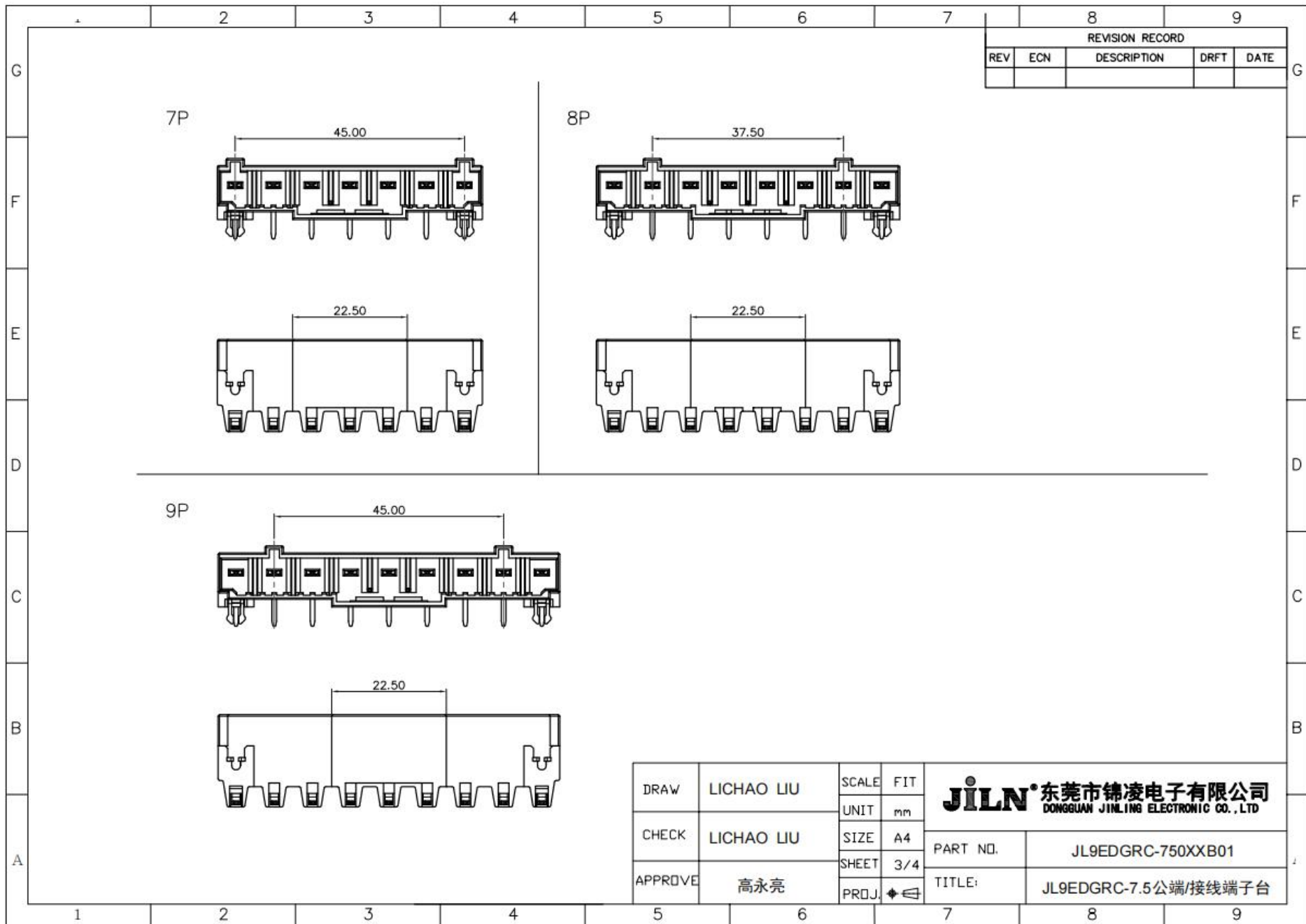
PART NO.	JL9EDGRC-750XXB01
TITLE:	JL9EDGRC-7.5公端/接线端子台



DRAW	LICHAO LIU	SCALE	FIT
		UNIT	mm
CHECK	LICHAO LIU	SIZE	A4
		SHEET	2/4
APPROVE	高永亮	PROJ.	◆ ←

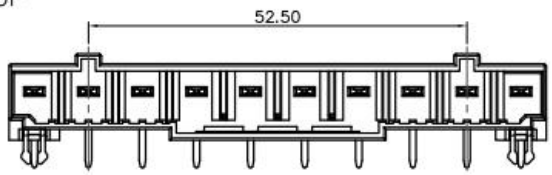
JILN 东莞市锦凌电子有限公司
DONGGUAN JINLING ELECTRONIC CO., LTD

PART NO.	JL9EDGRC-750XXB01
TITLE:	JL9EDGRC-7.5公端/接线端子台

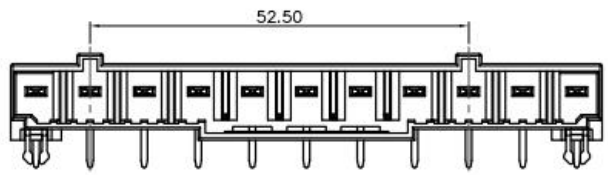


REVISION RECORD				
REV	ECN	DESCRIPTION	DRFT	DATE

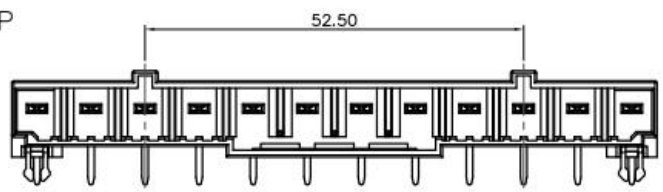
10P



11P



12P



DRAW	LICHAO LIU	SCALE	FIT
CHECK	LICHAO LIU	UNIT	mm
APPROVE	高永亮	SIZE	A4
		SHEET	4/4
		PROJ.	◆

JILN 东莞市锦凌电子有限公司
DONGGUAN JINLING ELECTRONIC CO., LTD

PART NO.	JL9EDGRC-750XXB01
TITLE:	JL9EDGRC-7.5公端/接线端子台

X-ON Electronics

Largest Supplier of Electrical and Electronic Components

Click to view similar products for [Pluggable Terminal Blocks](#) category:

Click to view products by [JILN](#) manufacturer:

Other Similar products are found below :

[57.510.0053](#) [MC 1.5/ 6-ST-3.5 GY AU](#) [ET02015000J0G](#) [734-104](#) [734-302](#) [860505](#) [860516](#) [860810](#) [GBPACX-12](#) [93.731.4953.0](#) [PV05-5,08-K](#) [PVP03-3,50](#) [PVP04-3,50](#) [PVS02-5,00](#) [1-1986160-3](#) [1377680000](#) [1531000000](#) [1546228-5](#) [ELFP03110](#) [ELFT07250](#) [ELVD12100](#) [ELVF09400](#) [ELVP03100](#) [ELXH071G0E](#) [1700410](#) [1702246](#) [1705229](#) [1714537](#) [1717806](#) [1719600](#) [1728941](#) [1734692](#) [1734795](#) [1740291](#) [1740628](#) [1746952](#) [1750207](#) [1752865](#) [1754115](#) [1754144](#) [1756913](#) [1760051](#) [1760336](#) [1765111](#) [1776388](#) [1777701](#) [1783410](#) [1800227](#) [1801080](#) [1809474](#)