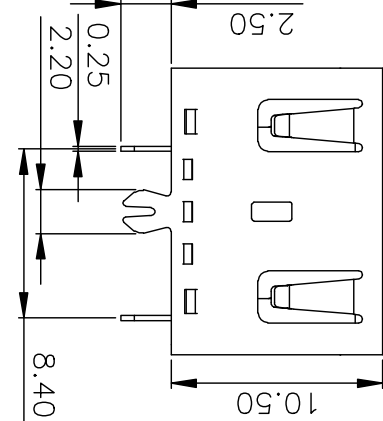
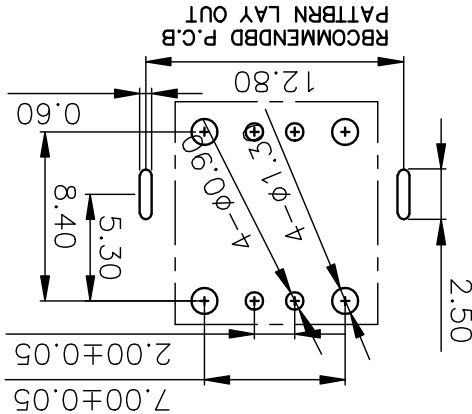
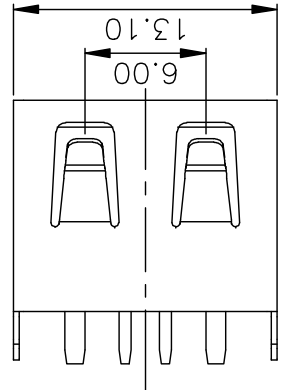
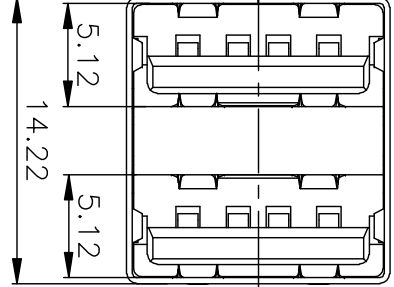
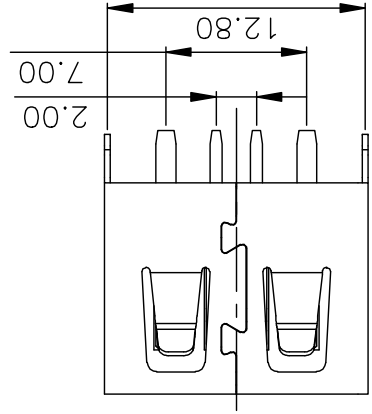


RoHS

# Parts Drawing

--	--	--



DRAWN	CHECKED	APPROVED
-------	---------	----------

TITLE  
USB AF 10.5短体双层直脚

PART NO.  
SEE PART ON

DRAWING NO.  
R907222A1021Y102

SCALE	1:1	1 OF 1	A4	X1
SHEET	SIZE	REV.	TOLERANCE .XXX±.10, .XXX±.25, .X±.38, ANGLES	

SYMBOL	ECN No.	MODIFICATION	DATE	ISSUED
REVISIONS				

Note:

- 1.1, Housing: black G/F, UL94V-0
- 1.2, Contact: copper alloy,  $t=0.25\text{mm}$
- 1.3, Shell: copper/Ferroalloy alloy,  $t=0.30\text{mm}$
2. Specification:
  - 2.1, Current rating: 5.0A Max.
  - 2.2, Dielectric withstanding voltage: 100 V(ac) for 1 min.
  - 2.3, Contact resistance: 30 mΩ Max.
  - 2.4, Insulation resistance: 100 MΩ Min.
  - 2.5, Total mating force: 3.57 Kgf Max.
  - 2.6, Total unmating force: 1.0 Kgf Min.
3. Finish:
  - 3.1, Contact: Plated Gold in Mating Area
  - 3.2, Shell: Nickel Plating
4. Environmental:
  - 4.1, Temperature range:  $-55^{\circ}\text{C}\sim 85^{\circ}\text{C}$

PART ON:

- 907-222AXXX1Y1XX
- 电镀规格: 02, 镀金1μ 04, 镀金3μ
  - 07, 镀金15μ 08, 镀金30μ
  - 端子材质: 1, 青铜 2, 磷铜
  - 端子规格: D, 90度 T, 180度 S, SMT贴片
  - 塑胶形态: 1, 双层短体 2, 双层半包
  - 塑胶颜色: 01, 白色 02, 黑色 03, 本色
  - 塑胶材质: 1, PBT 2, LCP 3, PA9T 4, PPA 5, PA6T
  - 对接方向: A, 正向 B, 反向
  - 外壳材质: 1, 铁壳 2, 铜壳
  - 接口类型: 1, 有边平脚 2, 无边平脚
  - 外壳脚型: 1, 弯脚 2, 直脚 3, 无脚 4, 鱼叉脚
  - 类别: 双层系列

深圳市精拓金电子有限公司

## X-ON Electronics

Largest Supplier of Electrical and Electronic Components

*Click to view similar products for [USB Connectors](#) category:*

*Click to view products by [Jing](#) manufacturer:*

Other Similar products are found below :

[10033527-N3112MLF](#) [17-210561](#) [GMCB05B11124H1EU](#) [17-200931](#) [65-647-8-BK-BU](#) [690-010-295-484](#) [73725-1191BLF](#) [950](#) [E8144-B01021-L](#) [A-USB A-LP-SMT-C](#) [A-USB B-TOP-C](#) [MUSBA511N5](#) [MUSBB15131](#) [MUSBC111M5](#) [MUSBD11135](#) [217450-1](#) [CA 6 W LD](#) [896-30-004-00-000000](#) [KUSBVX-BS1N-W30](#) [KUSBX-AP-KIT-SCBLK](#) [KUSBX-AS2N-W](#) [KUSBX-SMT2AP1S-W](#) [KUSBX-SMTAS1NBTR](#) [KUSBX-SMTBS1NBTR](#) [30-498-6](#) [SK-60A-2](#) [17-200261](#) [17-210051](#) [1734082-1](#) [FK-37-32SL](#) [30-1574](#) [30-470](#) [30-489](#) [30-541](#) [30-572-3](#) [30-9503](#) [M9177/2-1](#) [MAB 5 S](#) [MIKROE-1451](#) [33UBBR-04SW11R](#) [USBFTV2PEM2G](#) [USBFTVC6ZN](#) [USBFTVSCCG](#) [KUSBX-AS2N-W30](#) [KUSBX-SLAS1N-W](#) [KUSBX-SLAS1N-W30](#) [1-1734084-2](#) [E8110-001-01](#) [MUSBC11135](#) [NK-27-32SL](#)