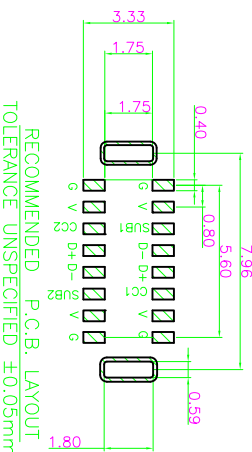
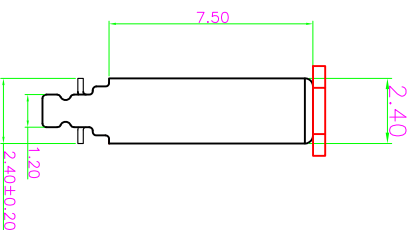
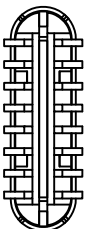
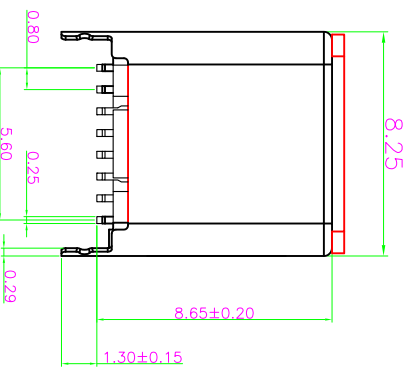
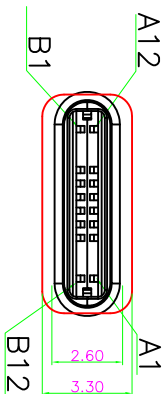


RoHS



RECOMMENDED P.C.B. LAYOUT
TOLERANCE UNSPECIFIED: ±0.05mm

MAPX	MODIFICATION	DRW	DATE

NOTE :
TC01MA016SX01XR

- 1.Selective Plating
S1:5u" Gold In Contact Area
100u" Tin In Tail Area
S2:0.8u" Gold In Contact Area
100u" Tin In Tail Area
S3:10u" Gold In Contact Area
100u" Tin In Tail Area
S4:15u" Gold In Contact Area
100u" Tin In Tail Area
S5:30u" Gold In Contact Area
100u" Tin In Tail Area
S9:3u" Gold In Contact Area
100u" Tin In Tail Area

7					
6					
5					
4	PLASTIC	HIGH TEMP	BLACK/WHITE	UL 94V-0	
3	Latch	STAINLESS STEEL		Ni Plated	
2	TERMINAL	COPPER ALLOY		Gold Plated	
1	SHELL	STAINLESS STEEL		Ni Plated	
NO.	DESCRIPTION	MATERIAL	COLOR	REMARK	

产品图
公差一览表
PRODUCT CHART DWG

深圳市精拓金电子有限公司
Shenzhen Jing Tuo Jin Electronics Co., Ltd.

公差一览表	公差	公差	公差
TOLERANCE UNLESS OTHERWISE	±0.25	±0.20	±0.15
	X	X	XX
	X	XX	XXX
	±5°	±2°	±1°
	±1°	±0.5°	
	XXX	XXX	XXX

单位	MM	制图	许榕强	制料号	
比例	1:1	审核	郭志富	产品名称	
日期	2016-09-09	核准	黄国荣	产品号	
DATE		APPR		角法	

TYPE C 2.0 公厘插头组件
180° SMT 8.65外壳插板

版本	A0
VER	

X-ON Electronics

Largest Supplier of Electrical and Electronic Components

Click to view similar products for [USB Connectors](#) category:

Click to view products by [Jing](#) manufacturer:

Other Similar products are found below :

[10033527-N3112MLF](#) [17-210561](#) [GMCB05B11124H1EU](#) [17-200931](#) [65-647-8-BK-BU](#) [690-010-295-484](#) [73725-1191BLF](#) [950](#) [E8144-B01021-L](#) [A-USB A-LP-SMT-C](#) [A-USB B-TOP-C](#) [MUSBA511N5](#) [MUSBB15131](#) [MUSBC111M5](#) [MUSBD11135](#) [217450-1](#) [CA 6 W LD](#)
[896-30-004-00-000000](#) [KUSBVX-BS1N-W30](#) [KUSBX-AP-KIT-SCBLK](#) [KUSBX-AS2N-W](#) [KUSBX-SMT2AP1S-W](#) [KUSBX-SMTAS1NBTR](#) [KUSBX-SMTBS1NBTR](#) [30-498-6](#) [SK-60A-2](#) [17-200261](#) [17-210051](#) [1734082-1](#) [FK-37-32SL](#) [30-1574](#) [30-470](#) [30-489](#) [30-541](#) [30-572-3](#) [30-9503](#) [M9177/2-1](#) [MAB 5 S](#) [MIKROE-1451](#) [33UBBR-04SW11R](#) [USBFTV2PEM2G](#) [USBFTVC6ZN](#) [USBFTVSCCG](#)
[KUSBX-AS2N-W30](#) [KUSBX-SLAS1N-W](#) [KUSBX-SLAS1N-W30](#) [1-1734084-2](#) [E8110-001-01](#) [MUSBC11135](#) [NK-27-32SL](#)