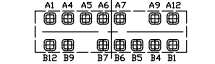
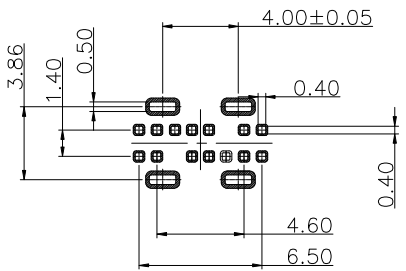
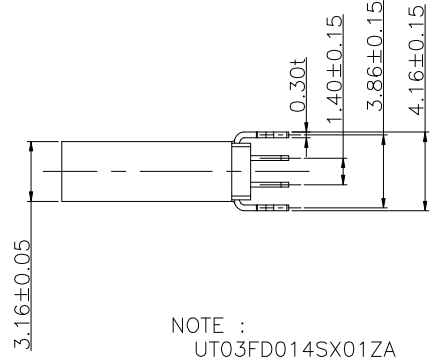
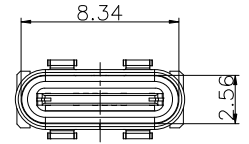
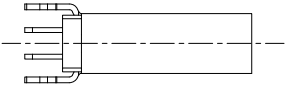
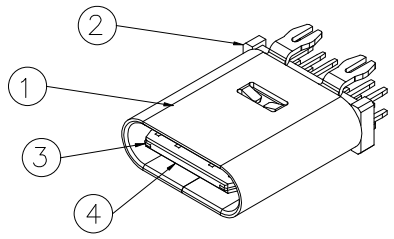
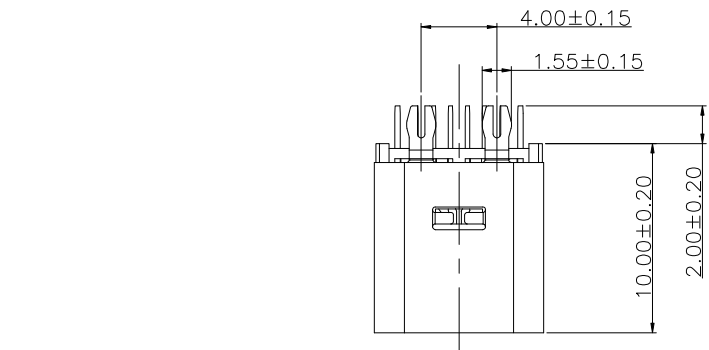


目錄 MAPX	设变内容 MODIFICATION	日期 DATE
------------	----------------------	------------



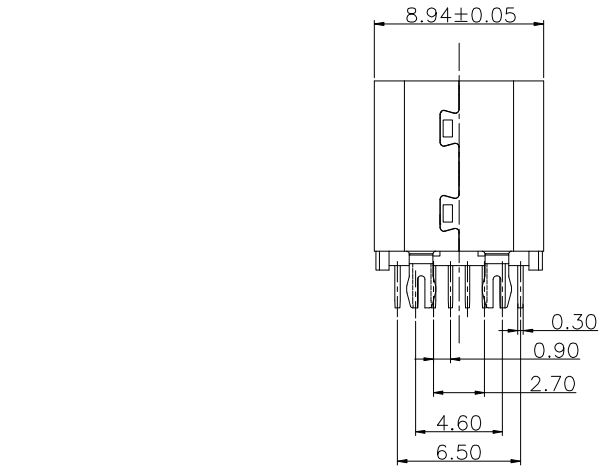
A1	GND	B12	GND
A4	VBUS	B9	VBUS
A5	CC1	B7	DN2
A6	DP1	B6	DP2
A7	DN1	B5	CC2
A9	VBUS	B4	VBUS
A12	GND	B1	GND
PIN	SIGNAL NAME	PIN	SIGNAL NAME

NOTE :
UT03FD014SX01ZA

RECOMMENDED P.C.B. LAYOUT
TOLERANCE UNSPECIFIED ±0.05mm

1. Seletive Plating
 S1:5u" Gold In Contact Area
 100u" Tin In Tail Area
 S2:0.8u" Gold In Contact Area
 100u" Tin In Tail Area
 S3:10u" Gold In Contact Area
 100u" Tin In Tail Area
 S4:15u" Gold In Contact Area
 100u" Tin In Tail Area
 S5:30u" Gold In Contact Area
 100u" Tin In Tail Area

7				
6				
5				
4	TYPE C MD	HIGH TEMP	BLACK	UL 94V-0
3	CENTER PIECE	STAINLESS STEEL	—	NO Plated
2	TYPE C TERMINAL	COPPER ALLOY	—	Gold Plated
1	SHELL	STAINLESS STEEL	—	Ni Plated
NO.	DESCRIPTION	MATERIAL	COLOR	REMARK



产品图 PRODUCT CHART DWG		深圳市精拓金电子有限公司			
公差一览表 TOLERANCE UNLESS OTHERWISE		单位 UNITS	MM	制图 DRAWING	林属升
X	±0.25	X'	±5'	产品料号 PRODUCT PART NO.	918-418K2022Y40028
.X	±0.20	.X'	±2'	产品名称 PRODUCT NO.	TYPE-C3.1母座立式10.0四鱼叉脚不锈 钢外壳1CP黑胶14PIN单卡点
.XX	±0.15	.XX'	±1'	比例 SCALE	1:1
.XXX	±0.10	.XXX'	±0.5'	日期 DATE	2015/10/20
		核 准 CHKD	郭志富	审核 APPD	黄国荣
		角法 VIEW		版本 VER	A0

X-ON Electronics

Largest Supplier of Electrical and Electronic Components

Click to view similar products for [USB Connectors](#) category:

Click to view products by [Jing](#) manufacturer:

Other Similar products are found below :

[950](#) [A-USB A-LP-SMT-C](#) [A-USB B-TOP-C](#) [MUSBD11135](#) [17-200721](#) [217450-1](#) [KMBVX-TH-5S-B30](#) [KUSBX-AS2N-W](#) [KUSBX-SMT2AP1S-W30](#) [935](#) [957](#) [30-498-6](#) [SK-60A-2](#) [1734082-1](#) [30-470](#) [30-489](#) [30-541](#) [MAB 5 S](#) [A-USB A-2P-C](#) [MIKROE-1451](#)
[USBFTVSCCG](#) [1-1734084-2](#) [MUSBA81130](#) [NK-27-32SL](#) [NK-L8-22C-5/8](#) [10135326-001LF](#) [4198](#) [690-024-633-031](#) [UB-20PMFP-LC7001](#)
[17-200011](#) [UB-20AFMM-LL7A01](#) [CAP-WCCMLPB1](#) [CAP-WCCMLPC1](#) [2274475-3](#) [914-614A2025S10200](#) [USB3FTV7SAGF059](#)
[USB3FTV2SAZNF459](#) [USB3FTV7SAZNF459](#) [HYCW153-USBD05-500B](#) [HYCW148-USBD05-117B](#) [HYCW149-USBD05-740B](#)
[HYCW214-USBA04-113B](#) [HYCW213-USBA04-113B](#) [KMMX-BSMT35S-1-B30TR](#) [2345986-1](#) [10082141-N340LF](#) [10117836-011LF](#)
[GSB3C3133DSYHR](#) [GT-USB-2014-CWG1](#) [GT-USB-7010ANS](#)