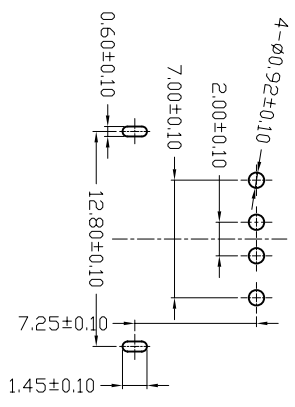
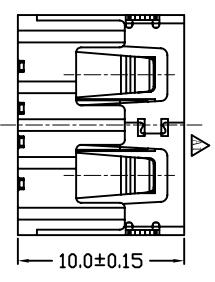
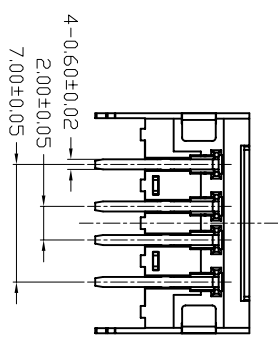
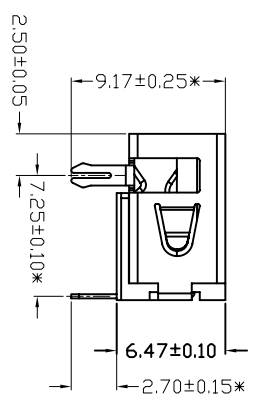
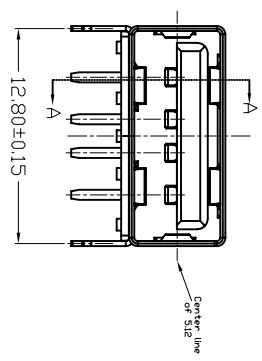
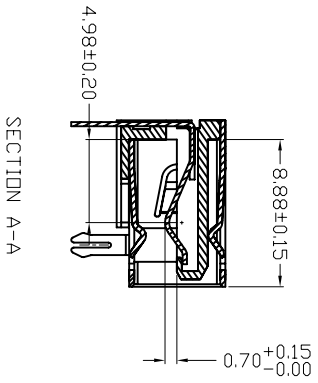


|      |              |      |
|------|--------------|------|
| MAPX | MODIFICATION | DATE |
|------|--------------|------|

NOTES:  
 1. HOUSING: SEE NOTES,  
 TERMINAL: SEE NOTES,  
 SHELL: SEE NOTES.

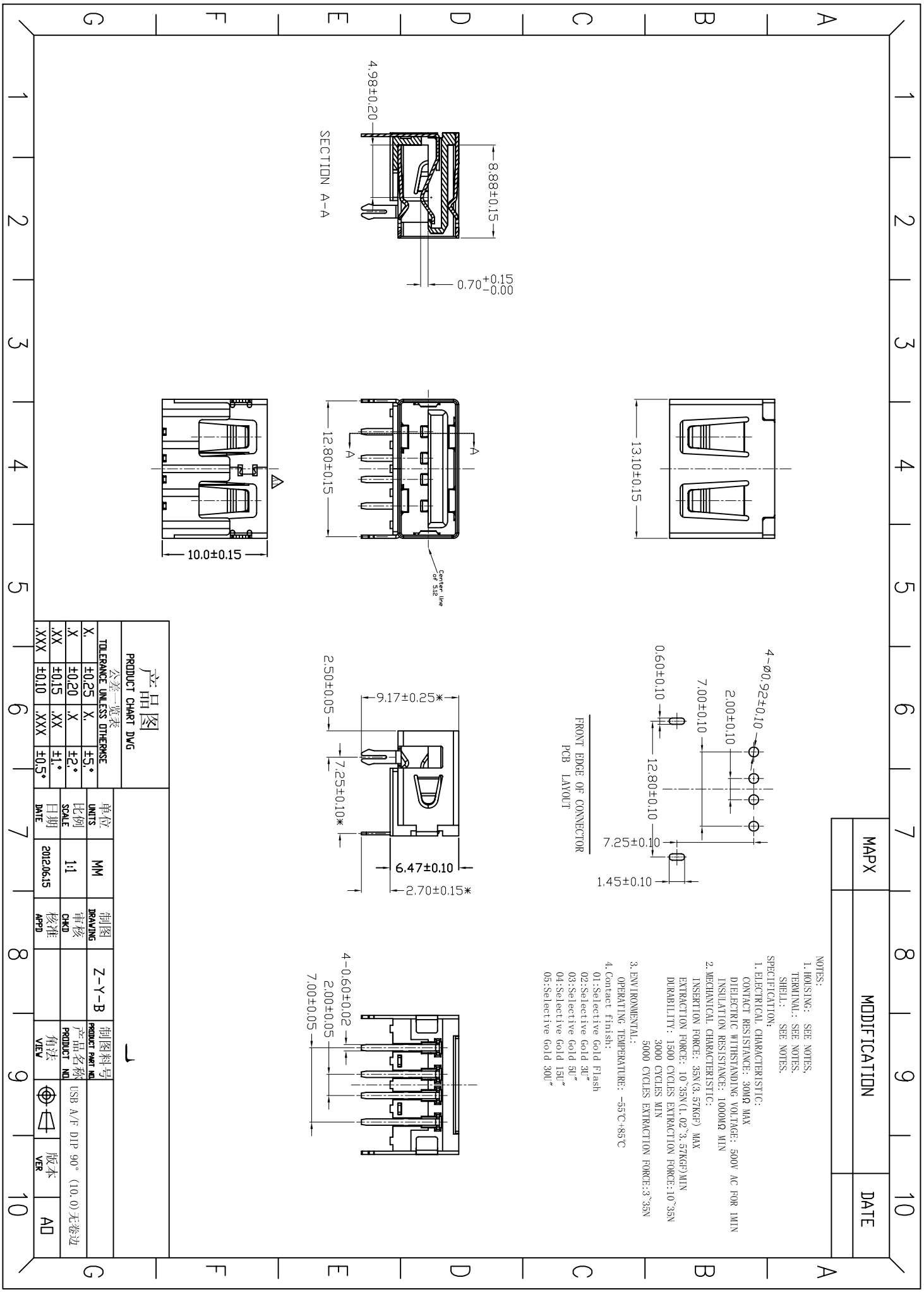


3. ENVIRONMENTAL:  
 OPERATING TEMPERATURE: -55°C+85°C  
 4. CONTACT FINISH:  
 01: Selective Gold Flash  
 02: Selective Gold 3U"  
 03: Selective Gold 5U"  
 04: Selective Gold 15U"  
 05: Selective Gold 30U"



产品图  
 PRODUCT CHART DWG

| 公差一览表<br>TOLERANCE UNLESS OTHERWISE |       | 单位<br>UNITS | 制图<br>DRAWING | 制图料号<br>PRODUCT PART NO. |
|-------------------------------------|-------|-------------|---------------|--------------------------|
| X                                   | ±0.25 | X           | ±5.°          |                          |
| X                                   | ±0.20 | X           | ±2.°          |                          |
| XX                                  | ±0.15 | XX          | ±1.°          |                          |
| XXX                                 | ±0.10 | XXX         | ±0.5°         |                          |
|                                     |       | 日期<br>DATE  | 2012.06.15    |                          |
|                                     |       | 比例<br>SCALE | 1:1           |                          |
|                                     |       | 核准<br>APPD  |               |                          |
|                                     |       | 角法<br>VIEW  |               |                          |
|                                     |       | 版本<br>VER   |               | A0                       |



## X-ON Electronics

Largest Supplier of Electrical and Electronic Components

*Click to view similar products for [USB Connectors](#) category:*

*Click to view products by [Jing](#) manufacturer:*

Other Similar products are found below :

[10033527-N3112MLF](#) [17-210561](#) [GMCB05B11124H1EU](#) [17-200931](#) [65-647-8-BK-BU](#) [690-010-295-484](#) [73725-1191BLF](#) [950](#) [E8144-B01021-L](#) [A-USB A-LP-SMT-C](#) [A-USB B-TOP-C](#) [MUSBA511N5](#) [MUSBB15131](#) [MUSBC111M5](#) [MUSBD11135](#) [217450-1](#) [CA 6 W LD](#) [896-30-004-00-000000](#) [KUSBVX-BS1N-W30](#) [KUSBX-AP-KIT-SCBLK](#) [KUSBX-AS2N-W](#) [KUSBX-SMT2AP1S-W](#) [KUSBX-SMTAS1NBTR](#) [KUSBX-SMTBS1NBTR](#) [30-498-6](#) [SK-60A-2](#) [17-200261](#) [17-210051](#) [1734082-1](#) [FK-37-32SL](#) [30-1574](#) [30-470](#) [30-489](#) [30-541](#) [30-572-3](#) [30-9503](#) [M9177/2-1](#) [MAB 5 S](#) [MIKROE-1451](#) [33UBBR-04SW11R](#) [USBFTV2PEM2G](#) [USBFTVC6ZN](#) [USBFTVSCCG](#) [KUSBX-AS2N-W30](#) [KUSBX-SLAS1N-W](#) [KUSBX-SLAS1N-W30](#) [1-1734084-2](#) [E8110-001-01](#) [MUSBC11135](#) [NK-27-32SL](#)