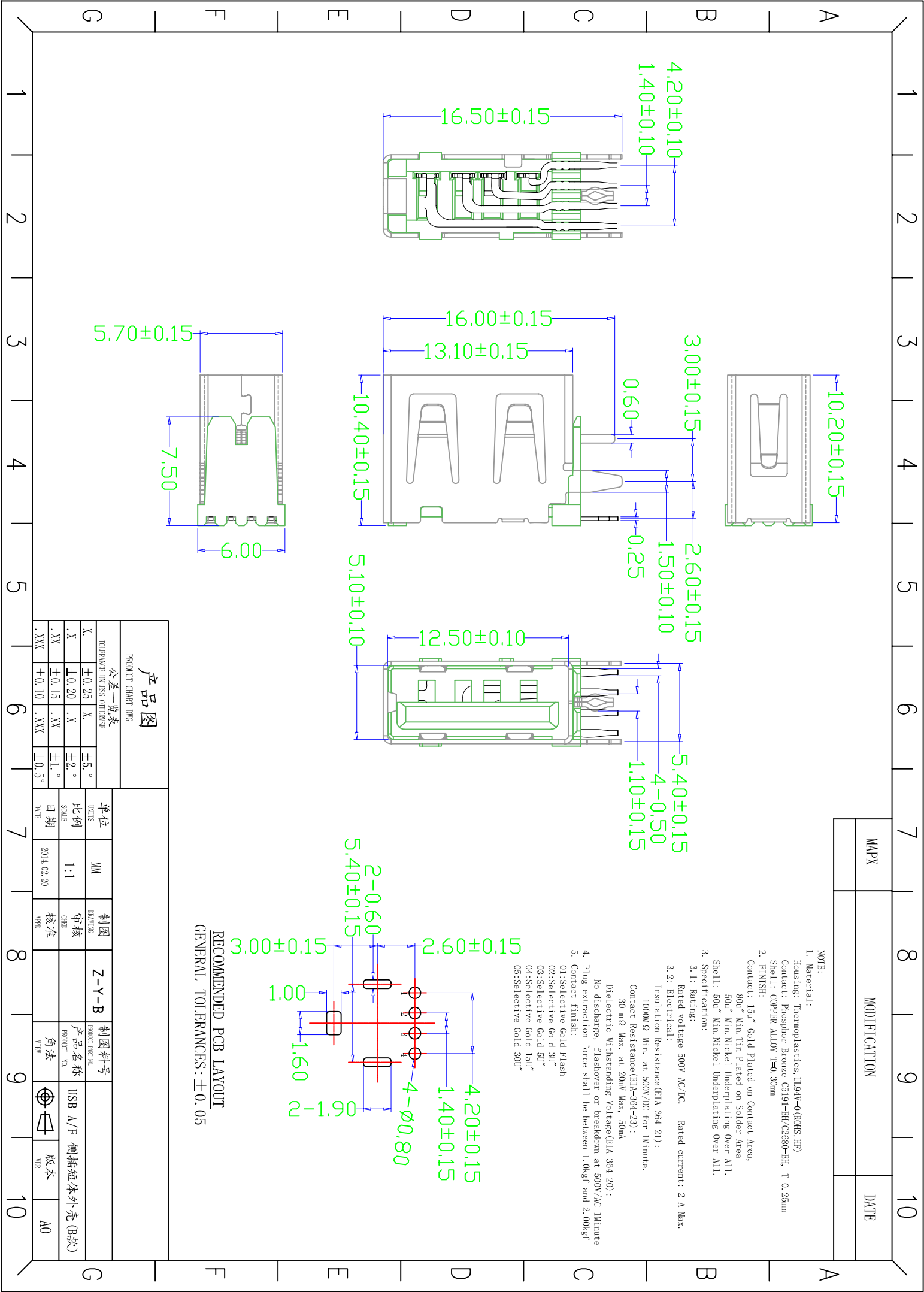


MAPX	MODIFICATION	DATE
------	--------------	------

NOTE:

- Material:  
Housing: Thermoplastics (U94V-0(ROHS-HP))  
Contact: Phosphor Bronze C5191-2H/C2680-2H, T=0.25mm  
Shell: COPPER ALLOY T=0.30mm
- FINISH:  
Contact: 15u" Gold Plated on Contact Area,  
80u" Min. Tin Plated on Solder Area  
50u" Min. Nickel Underplating Over All.  
Shell: 50u" Min. Nickel Underplating Over All.
- Specification:  
3.1: Rating:  
3.2: Rated voltage 500V AC/DC. Rated current: 2 A Max.  
3.2: Electrical:  
Insulation Resistance(EIA-364-21):  
1000MΩ Min. at 500V/DC for 1Minute.  
Contact Resistance(EIA-364-22):  
30 mΩ Max. at 20mV Max, 50mA  
Dielectric Withstanding Voltage(EIA-364-20):  
No discharge. Flashover or breakdown at 500V/AC 1Minute  
Plug extraction force shall be between 1.0kgf and 2.00kgf
- Plug extraction force shall be between 1.0kgf and 2.00kgf
- Contact finish:  
01: Selective Gold Flash  
02: Selective Gold 3U"  
03: Selective Gold 5U"  
04: Selective Gold 15U"  
05: Selective Gold 30U"

RECOMMENDED PCB LAYOUT  
GENERAL TOLERANCES: ±0.05



产品图

PRODUCT CHART DMC

公差一览表  
TOLERANCE UNLESS OTHERWISE:

X.	±0.25	X.	±5.°
.X	±0.20	.X	±2.°
.XX	±0.15	.XX	±1.°
.XXX	±0.10	.XXX	±0.5°

单位 UNITS	MM	制图 DRAWING	Z-Y-B	制图料号 PRODUCT PART NO.	
比例 SCALE	1:1	审核 CHECK		产品名称 PRODUCT NO.	USB A/F 侧插短体外壳 (B款)
日期 DATE	2014.02.20	核准 APPROV		角法 VIEW	
				版本 VER	A0

## X-ON Electronics

Largest Supplier of Electrical and Electronic Components

*Click to view similar products for [USB Connectors](#) category:*

*Click to view products by [Jing](#) manufacturer:*

Other Similar products are found below :

[10033527-N3112MLF](#) [17-210561](#) [GMCB05B11124H1EU](#) [17-200931](#) [65-647-8-BK-BU](#) [690-010-295-484](#) [73725-1191BLF](#) [950](#) [E8144-B01021-L](#) [A-USB A-LP-SMT-C](#) [A-USB B-TOP-C](#) [MUSBA511N5](#) [MUSBB15131](#) [MUSBC111M5](#) [MUSBD11135](#) [217450-1](#) [CA 6 W LD](#) [896-30-004-00-000000](#) [KUSBVX-BS1N-W30](#) [KUSBX-AP-KIT-SCBLK](#) [KUSBX-AS2N-W](#) [KUSBX-SMT2AP1S-W](#) [KUSBX-SMTAS1NBTR](#) [KUSBX-SMTBS1NBTR](#) [30-498-6](#) [SK-60A-2](#) [17-200261](#) [17-210051](#) [1734082-1](#) [FK-37-32SL](#) [30-1574](#) [30-470](#) [30-489](#) [30-541](#) [30-572-3](#) [30-9503](#) [M9177/2-1](#) [MAB 5 S](#) [MIKROE-1451](#) [33UBBR-04SW11R](#) [USBFTV2PEM2G](#) [USBFTVC6ZN](#) [USBFTVSCCG](#) [KUSBX-AS2N-W30](#) [KUSBX-SLAS1N-W](#) [KUSBX-SLAS1N-W30](#) [1-1734084-2](#) [E8110-001-01](#) [MUSBC11135](#) [NK-27-32SL](#)