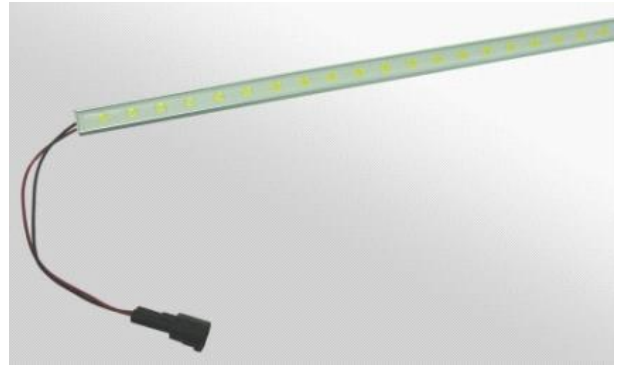


ALUMILINE® LED FIXTURE

Features

- High Brightness
- Long Life
- Low Power Consumption
- RoHS Compliant
- No UV Emission
- Thermally Optimized
- Low Profile
- IP67
- Mounting Holes for Ease of Installation



Maximum Ratings

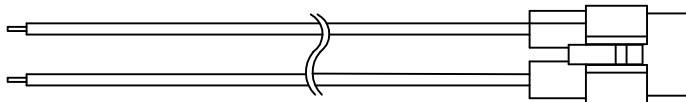
Parameter	Symbol	Rating	Units
LED Junction Temperature	T_J	125	°C
Operating Temperature	T_{opr}	-30 ~ +85	°C
Storage Temperature	T_{stg}	-40 ~ +85	°C
Input Voltage	$V_{in DC}$	20 - 35	Volts

Accessories

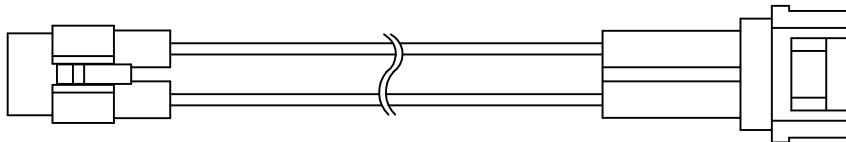
- ZPS-2435: 24V, 35 Watt Power Supply
- ZPS-2460: 24V, 60 Watt Power Supply
- ZDM-01: PWM LED Dimmer

Note: ZPS-2435 and ZPS-2460 require use of wire nuts for connections.

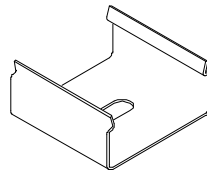
Mating Components



ZWF-1000-I: Input Connector



ZWF-CH-J: Jumper Connector



ZWF-12-C: Mounting Clip

Note

Please refer to JKL Application Sheet **JKL-AS-ZWF-ALUMILINE** for Installation and Power recommendations.

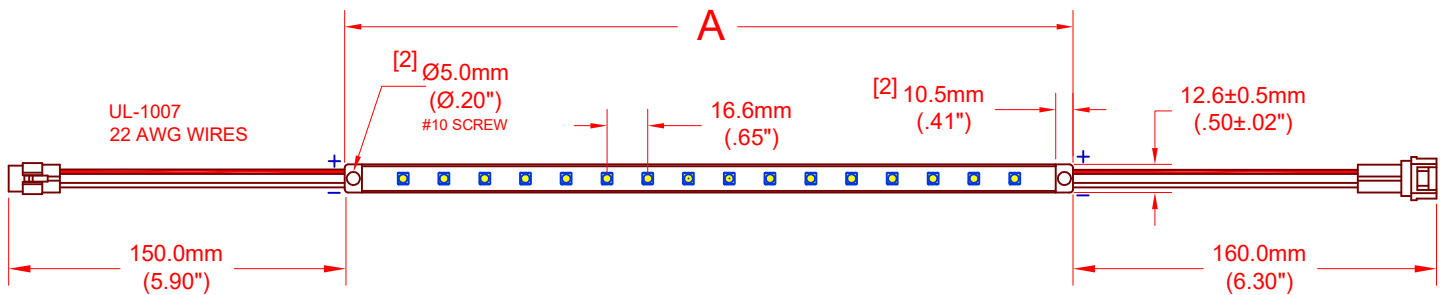


REV. NO.	DESCRIPTION/ECO NUMBER	APPV'D DATE	METRIC	DIMENSIONS ARE MILLIMETER (INCH)	TOLERANCE UNLESS OTHERWISE SPECIFIED	SIZE	FSCM NO.	DRAWING NO.	RELEASED DATE	REVISION DATE	REV. NO.	SHEET				
E	ADD CANADIAN-US SYMBOL	9/16/19	<p>THIRD ANGLE PROJECTION</p>	<p>1 PL +/- REF.</p> <p>2 PL +/- REF.</p> <p>ANGLE +/- REF.</p>	<p>ALUMILINE® 24V DC LED FIXTURE</p>	<p>A</p>	<p>55335</p>	<p>ZWF-MULTI</p>	<p>6/27/12</p>	<p>6/16/19</p>	<p>E</p>	<p>1 OF 2</p>				
D	ADD PART # ZWF-438-24WW, CHNG. ZWF-438-24CW 26 LEDS TO 24 LEDS	8/7/14														
C	CHANGE PART NO. ZWF-486-24CW TO 438	1/9/13														
B	ADD PART NO. ZWF-486-24CW ON PG. 2	11/27/12														
A	CHANGE MOUNTING CLIP PART NO. RELEASE AND CANCEL PL-1206-03	9/18/12 6/27/12														
<p>- CAD DRAWING -</p> <p>MANUAL REVISIONS NOT PERMITTED</p>			<p>SCALE</p> <p>NONE</p>		<p>TITLE</p> <p>ALUMILINE® 24V DC LED FIXTURE</p>		<p>SCALE</p> <p>NONE</p>		<p>RELEASED DATE</p> <p>6/27/12</p>		<p>REVISION DATE</p> <p>6/16/19</p>		<p>REV. NO.</p> <p>E</p>		<p>SHEET</p> <p>1 OF 2</p>	

JKL COMPONENTS CORPORATION

ALUMILINE® LED FIXTURE

Dimensions



Electro-Optical Characteristics (Ta = 25°C)

COLOR: COOL WHITE 6000K

JKL Part Number	Dimension A ± 5.0mm (±0.2 inch)	Number LEDs	Power (W)	Current (mA)	Lumen Flux (lm)
ZWF-337-24CW	337.0 (13.27)	18	2.9	120	248
ZWF-438-24CW	438.0 (17.24)	24	4.19	173	358
ZWF-638-24CW	638.0 (25.12)	36	5.8	240	469
ZWF-939-24CW	939.0 (36.97)	54	8.7	350	691
ZWF-1239-24CW	1239.0 (48.78)	72	11.6	480	912

COLOR: WARM WHITE 3000K

ZWF-337-24WW	337.0 (13.27)	18	2.9	120	230
ZWF-438-24WW	438.0 (17.24)	24	3.9	162	340
ZWF-638-24WW	638.0 (25.12)	36	5.8	240	435
ZWF-939-24WW	939.0 (36.97)	54	8.7	350	690
ZWF-1239-24WW	1239.0 (48.78)	72	11.6	480	845

X-ON Electronics

Largest Supplier of Electrical and Electronic Components

Click to view similar products for [LED Lighting Fixtures](#) category:

Click to view products by [JKL](#) manufacturer:

Other Similar products are found below :

[1301080067](#) [XVEC21P](#) [XVEC2B7](#) [2576960000](#) [113163000-00662717](#) [113472000-00691461](#) [XVBC2B3](#) [XVBC2B7](#) [XVBC4B4](#) [XVBC4B5](#)
[XVBC4B6](#) [XVBC4M3](#) [XVBC4M4](#) [XVBC4M5](#) [XVBC4M8](#) [XVBZ01](#) [XVBZ03A](#) [XVBZ04](#) [E35600](#) [NB-RLAMP01-LED](#) [FLK7LED](#)
[XVBZ04A](#) [XVBC4M7](#) [XVBC4M6](#) [XVBC4B3](#) [XVBC2B8](#) [2700127](#) [2702933](#) [2702477](#) [2403122](#) [2403121](#) [2402991](#) [89406068](#) [148-00076](#)
[113261000-00641180](#) [190007019-00014904](#) [226108019-00610754](#) [4823](#) [4824](#) [4868](#) [11212573001-00514271](#) [112887037-00076065](#)
[113021000-00564565](#) [113473000-00704968](#) [NB-RLAMP01](#) [112577000-00539774](#) [113458000-00668976](#) [E35500](#) [408001403-00671626](#)
[SL7/4-FW](#)