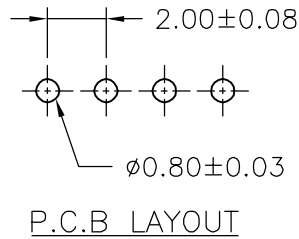
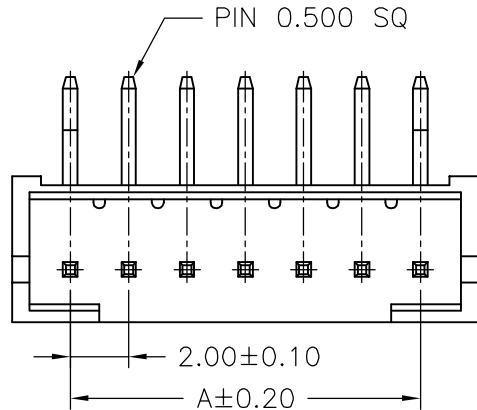


SPECIFICATIONS
 Current Rating: 3A AC,DC
 Voltage Rating: 300V AC,DC
 Temperature Range: -25°C ~ +85°C
 Contact Resistance: 20mΩ Max
 Insulation Resistance: 100MΩ Min
 Withstanding Voltage: 1000V AC/minute
 Pin Material: Brass/Tin-plated
 Material: Nylon 66,UL94V-0
 Pantone Color: 153C~154C



Ordering Information:

A2100WR-XP*

1 2

1.Part No.

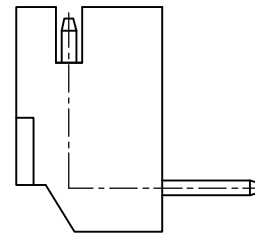
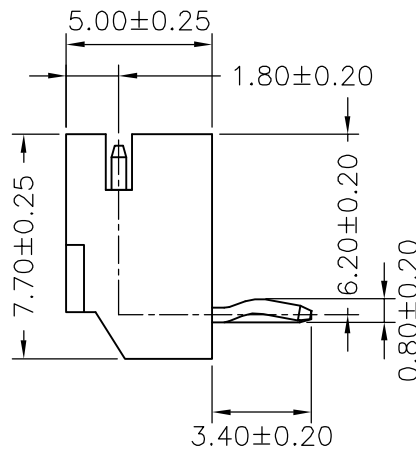
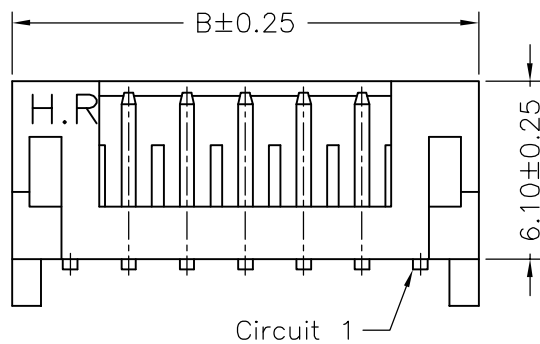
2.Style:

1-Type 1

2-Type 2

Ordering Information & Dimensions

| PART NO. | Dimensions | |
|-------------|------------|-------|
| | A | B |
| A2100WR-02P | 2.00 | 6.00 |
| A2100WR-03P | 4.00 | 8.00 |
| A2100WR-04P | 6.00 | 10.00 |
| A2100WR-05P | 8.00 | 12.00 |
| A2100WR-06P | 10.00 | 14.00 |
| A2100WR-07P | 12.00 | 16.00 |
| A2100WR-08P | 14.00 | 18.00 |
| A2100WR-09P | 16.00 | 20.00 |
| A2100WR-10P | 18.00 | 22.00 |
| A2100WR-11P | 20.00 | 24.00 |
| A2100WR-12P | 22.00 | 26.00 |
| A2100WR-13P | 24.00 | 28.00 |
| A2100WR-14P | 26.00 | 30.00 |
| A2100WR-15P | 28.00 | 32.00 |



TYPE 2

TYPE 1

| | | | | | | | |
|-------------------|-------------|-------------|-------------|---------------------------|---------|--------|--------|
| | | | | UNIT | SCALE | SHEET | TITLE: |
| | | | | mm | | 1 of 1 | |
| DRAWN BY | | APPROVED BY | | 2.00mm PITCH 90° WAFER | | | |
| 董正一 | | 董正一 | | | | | |
| 2001.02.01 | | 2001.02.01 | | | | | |
| GENERAL TOLERANCE | | | | DRAW NO. : A2100WR-XPX | | | |
| B1 | REVISE | 2009.04.23 | X. X±0.25 | ANGLE± | REV. B1 | | |
| B0 | NEW RELEASE | 2006.01.07 | X. XX±0.15 | | | | |
| REV. | DESCRIPTION | DATE | X. XXX±0.05 | | | | |

X-ON Electronics

Largest Supplier of Electrical and Electronic Components

Click to view similar products for [Headers & Wire Housings](#) category:

Click to view products by [Joint manufacturer](#):

Other Similar products are found below :

[95000-104TRLF](#) [10135584-644402LF](#) [DF62W-EP2022PCA](#) [95000-106TRLF](#) [DF62W-2022SCA](#) [DF62W-EP2022PC](#) [2203348](#) [DF62W-2022SC](#) [1084018](#) [1029039](#) [1084017](#) [802-10-012-10-002000](#) [1112640](#) [1112639](#) [891-007-9SS-BST1T](#) [000-34000](#) [0008550134](#) [0009482033](#) [0009507031](#) [57102-F02-18ULF](#) [57102-S06-03LF](#) [57202-S52-04LF](#) [PCN6-15S-2.5E](#) [0039019024](#) [58102-G61-06LF](#) [582553-1](#) [0009485154](#) [0009508121](#) [0022285053](#) [0050291907](#) [018731A](#) [LY20-4P-DT1-P1E-BR](#) [02.125.8002.8](#) [60101931](#) [60598-1 \(Cut Strip\)](#) [M1625-3R/100](#) [61062-3](#) [61082-181009](#) [CSU011177004](#) [636-1427](#) [638009-1](#) [641938-9](#) [641991-4](#) [644168-1](#) [644827-2](#) [647662-1](#) [65039-019ELF](#) [65692-001LF](#) [65781-018](#) [65781-047](#)