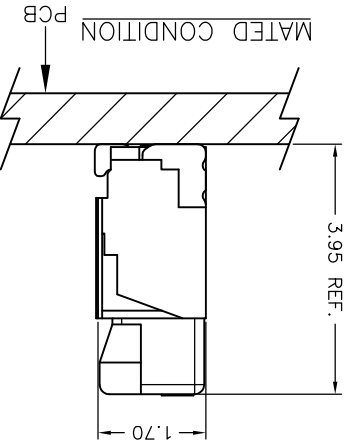


REV.	DESCRIPTION	DATE	X.XXX±0.05	ANGLE	DRAWN BY	SCALE	SHEET	TITLE:	
B0	REVISION	2008.11.26	X.XX±0.15		李勤	mm	1 of 2	180° WAFER-SMT TYPE	
B1	REVISION	2009.03.19	X.X±0.25	GENERAL TOLERANCE	李勤			180° WAFER-SMT TYPE	
B2	REVISION	2009.04.01			李勤			180° WAFER-SMT TYPE	
B3	ECN NO. EN1001040002	2010.01.04	2006.02.07	APPROVED BY	李勤			180° WAFER-SMT TYPE	
B4	ECN NO. EN1001180043	2010.01.18	2006.02.07	APPROVED BY	李勤			180° WAFER-SMT TYPE	
DRAWN NO.:		A0800WV-S-XP		UNIT		SCALE		SHEET	

聯達電子工業股份有限公司
JOINT TECH ELECTRONIC IND. CO., LTD.

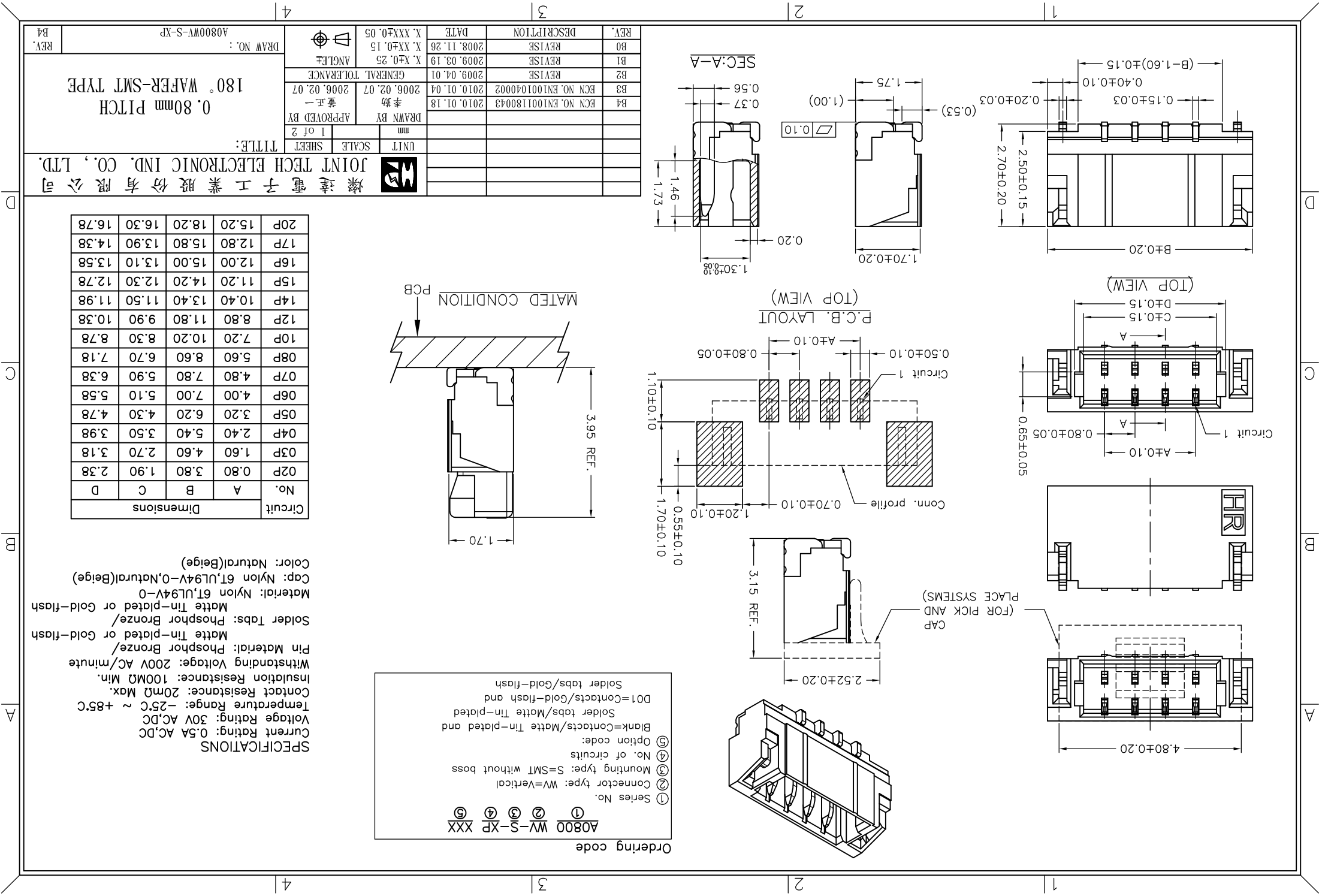
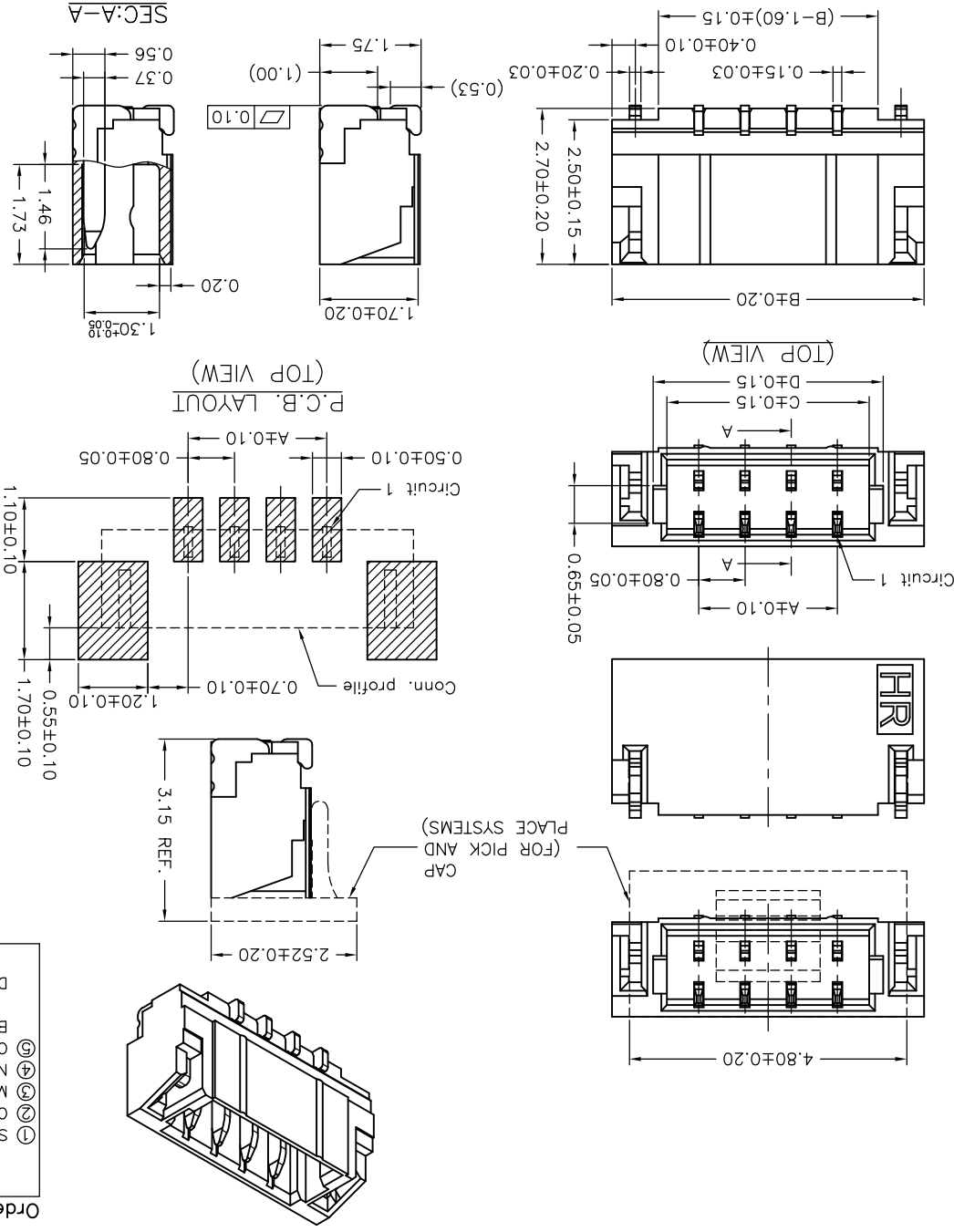
Dimensions		A		B		C		D	
20P	15.20	18.20	16.30	16.30	16.78				
17P	12.80	15.80	13.90	14.38					
16P	12.00	15.00	13.10	13.58					
15P	11.20	14.20	12.30	12.78					
14P	10.40	13.40	11.50	11.98					
12P	8.80	11.80	9.90	10.38					
10P	7.20	10.20	8.30	8.78					
08P	5.60	8.60	6.70	7.18					
07P	4.80	7.80	5.90	6.38					
06P	4.00	7.00	5.10	5.58					
05P	3.20	6.20	4.30	4.78					
04P	2.40	5.40	3.50	3.98					
03P	1.60	4.60	2.70	3.18					
02P	0.80	3.80	1.90	2.38					



Ordering code
A0800 WV-S-XP XXX ① ② ③ ④ ⑤

① Series No.
② Connector type: WV=Vertical
③ Mounting type: S=SMT without boss
④ No. of circuits
⑤ Option code:
Blank=Contacts/Matte Tin-plated and Solder tabs/Matte Tin-plated
D01=Contacts/Gold-flash and Solder tabs/Gold-flash

SPECIFICATIONS
 Current Rating: 0.5A AC,DC
 Voltage Rating: 30V AC,DC
 Temperature Range: -25°C ~ +85°C
 Contact Resistance: 20mΩ Max.
 Insulation Resistance: 100MΩ Min.
 Withstanding Voltage: 200V AC/minute
 Pin Material: Phosphor Bronze/
 Matte Tin-plated or Gold-flash
 Solder Tabs: Phosphor Bronze/
 Matte Tin-plated or Gold-flash
 Material: Nylon 6T,UL94V-0
 Cap: Nylon 6T,UL94V-0,Natural(Beige)
 Color: Natural(Beige)



X-ON Electronics

Largest Supplier of Electrical and Electronic Components

Click to view similar products for [Headers & Wire Housings](#) category:

Click to view products by [Joint Tech](#) manufacturer:

Other Similar products are found below :

[95000-104TRLF](#) [10135584-644402LF](#) [DF62W-EP2022PCA](#) [95000-106TRLF](#) [DF62W-2022SCA](#) [DF62W-EP2022PC](#) [2203348](#) [DF62W-2022SC](#) [1084018](#) [1029039](#) [1084017](#) [802-10-012-10-002000](#) [1112640](#) [1112639](#) [891-007-9SS-BST1T](#) [000-34000](#) [0008550134](#) [0009482033](#) [0009507031](#) [57102-F02-18ULF](#) [57102-S06-03LF](#) [57202-S52-04LF](#) [PCN6-15S-2.5E](#) [0039019024](#) [58102-G61-06LF](#) [582553-1](#) [0009485154](#) [0009508121](#) [0022285053](#) [0050291907](#) [018731A](#) [LY20-4P-DT1-P1E-BR](#) [02.125.8002.8](#) [60101931](#) [60598-1 \(Cut Strip\)](#) [M1625-3R/100](#) [61062-3](#) [61082-181009](#) [CSU011177004](#) [636-1427](#) [638009-1](#) [641938-9](#) [641991-4](#) [644168-1](#) [644827-2](#) [647662-1](#) [65039-019ELF](#) [65692-001LF](#) [65781-018](#) [65781-047](#)