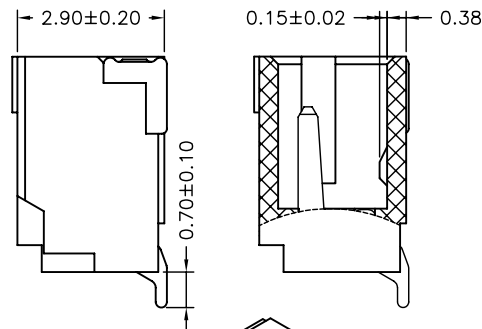
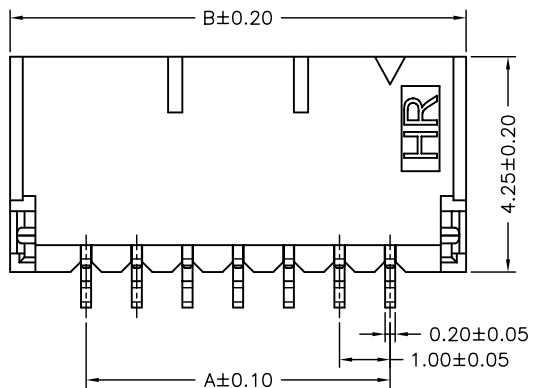


SPECIFICATIONS

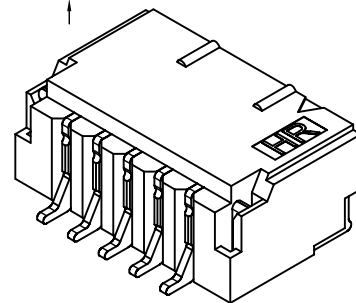
Current Rating: 1A AC,DC
 Voltage Rating: 50V AC,DC
 Temperature Range: -25°C ~ +85°C
 Contact Resistance: 20mΩ Max.
 Insulation Resistance: 100MΩ Min.
 Withstanding Voltage: 500V AC/minute
 Pin Material: Phosphor Bronze
 Solder Tabs: Brass
 Wafer: Nylon 6T&9T,UL94V-0
 Cap: Nylon 6T,UL94V-0
 Color: Black & Beige



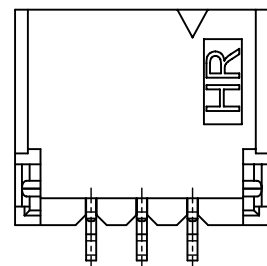
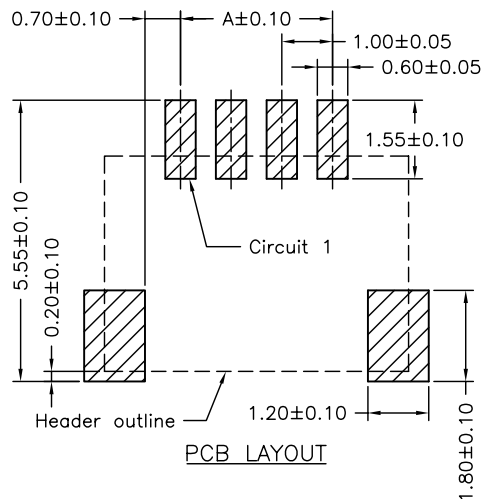
P/N LEGEND

A1001 WR-S-XP XXX
 ① Series No.
 ② Connector type: WR=Wright angel
 ③ Mounting type: S=SMT without post
 ④ No. of circuits
 ⑤ Option code:
 Blank=Nylon 6T,UL94V-0,Color Natural(Beige)
 Contacts/Matte Tin-plated
 Solder tabs/Matte Tin-plated
 D01 =Nylon 6T,UL94V-0,Color Natural(Beige)
 Contacts/Gold-flash and
 Solder tabs/Gold-flash
 D02 =Nylon 6T,UL94V-0,Color Natural(Beige)
 Contacts/Gold-flash 3u" and
 Solder tabs/Gold-flash
 D11 =Nylon 6T,UL94V-0,Color Natural(Black)
 Contacts/Gold-flash and
 Solder tabs/Gold-flash
 D12 =Nylon9T,UL94V-0,Color Natural(Beige)
 Contacts/Gold-flash and
 Solder tabs/Gold-flash

| Circuit No. | Dimensions | | |
|-------------|------------|-------|-------|
| | A | B | C |
| 02P | 1.00 | 4.00 | 2.45 |
| 03P | 2.00 | 5.00 | 3.45 |
| 04P | 3.00 | 6.00 | 4.45 |
| 05P | 4.00 | 7.00 | 5.45 |
| 06P | 5.00 | 8.00 | 6.45 |
| 07P | 6.00 | 9.00 | 7.45 |
| 08P | 7.00 | 10.00 | 8.45 |
| 09P | 8.00 | 11.00 | 9.45 |
| 10P | 9.00 | 12.00 | 10.45 |
| 11P | 10.00 | 13.00 | 11.45 |
| 12P | 11.00 | 14.00 | 12.45 |
| 13P | 12.00 | 15.00 | 13.45 |
| 14P | 13.00 | 16.00 | 14.45 |
| 15P | 14.00 | 17.00 | 15.45 |
| 16P | 15.00 | 18.00 | 16.45 |
| 17P | 16.00 | 19.00 | 17.45 |
| 18P | 17.00 | 20.00 | 18.45 |
| 19P | 18.00 | 21.00 | 19.45 |
| 20P | 19.00 | 22.00 | 20.45 |
| 24P | 23.00 | 26.00 | 23.45 |



02~03P



| | | | | | |
|-------------------|--------------|------------|-------|--|--------|
| | | | | 燦達電子工業股份有限公司 JOINT TECH ELECTRONIC IND. CO., LTD. | |
| | | UNIT | SCALE | SHEET | |
| | | mm | | 1 of 2 | |
| | | DRAWN BY | | APPROVED BY | |
| | | 蕭惠鳳 | | 董正一 | |
| | | 2002.05.28 | | 2002.05.28 | |
| GENERAL TOLERANCE | | | | | |
| C0 | EN1312160435 | 2013.12.18 | 郭本恩 | X.X±0.25 | ANGLE± |
| B5 | EN1110110449 | 2011.11.29 | 陳敏 | X.XX±0.15 | |
| REV. | DESCRIPTION | DATE | NAME | X.XXX±0.05 | |
| | | | | TITLE: | |
| | | | | 1.00mm PITCH 90° WAFER-SMT TYPE | |
| | | | | DRAW NO. : | |
| | | | | A1001WR-S-XP | |
| | | | | REV. CO | |

X-ON Electronics

Largest Supplier of Electrical and Electronic Components

Click to view similar products for [Headers & Wire Housings](#) category:

Click to view products by [Joint Tech](#) manufacturer:

Other Similar products are found below :

[57102-F02-18ULF](#) [58102-G61-06LF](#) [0009485154](#) [009176003701906](#) [0050291907](#) [02.125.8002.8](#) [609-3404](#) [61062-3](#) [622-0430](#) [622-3653LF](#)
[63453-116](#) [636-1030](#) [636-1427](#) [636-3427](#) [636-4007](#) [641938-9](#) [65495-038](#) [65692-001LF](#) [65781-018](#) [65781-047](#) [65817-010LF](#) [65817-015LF](#)
[66207-023LF](#) [67016-026LF](#) [67095-007LF](#) [68631-112](#) [68645-018](#) [68648-049](#) [699319-000](#) [70.362.1628.0](#) [70-4210](#) [70-4226B](#) [70-4853B](#) [707-](#)
[5020](#) [707-5028](#) [71.350.2428.0](#) [71961-016LF](#) [733-134](#) [754199-000](#) [760-3052](#) [787-8014-00](#) [FCN-367T-T012/H](#) [80.063.4001.1](#) [800-90-001-](#)
[10-001000](#) [800-90-010-10-002000](#) [801-43-002-10-013000](#) [801-43-006-10-002000](#) [803-41-018-10-001000](#) [803-43-014-20-001000](#)
[803-43-024-10-001000](#)