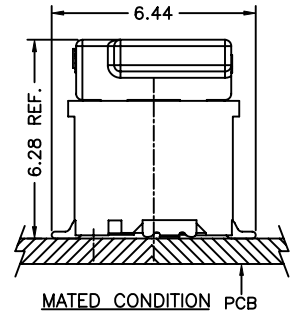
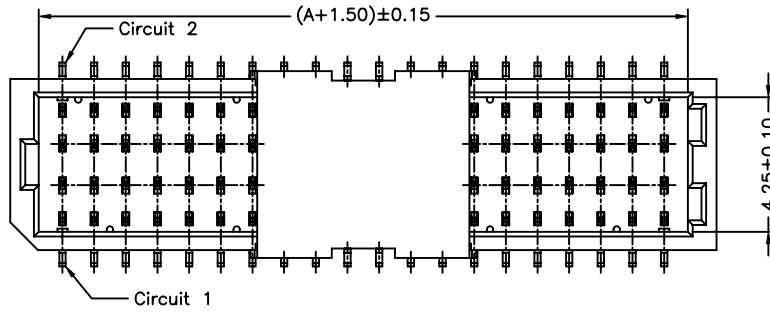


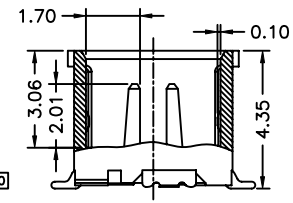
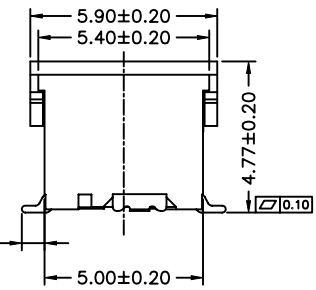
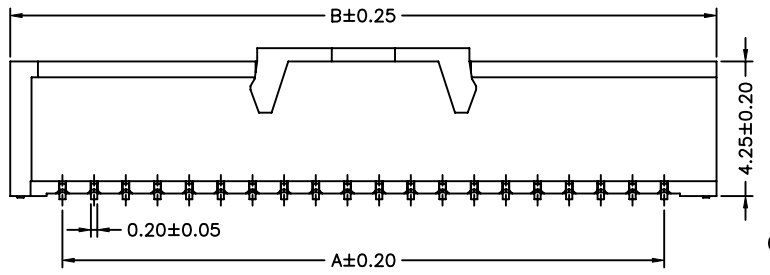
P/N LEGEND

A1001 WV-S-2XNP XXX				
①	②	③	④	⑤
① Series No.				
② Connector type: WV=Vertical				
③ Mounting type: S=SMT without post				
④ No. of circuits				
⑤ Option code:				
Blank=Contacts/Gold-flash and Solder tabs/Matte Tin-plated				
D01=Contacts/Gold-flash and Solder tabs/Gold-flash				

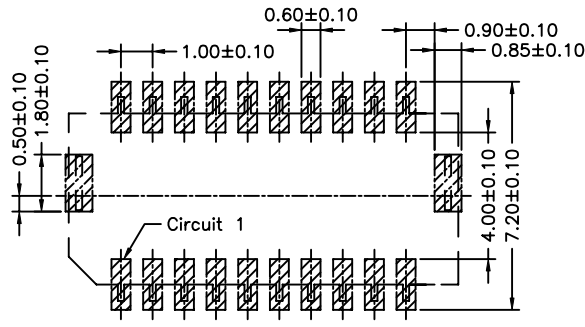
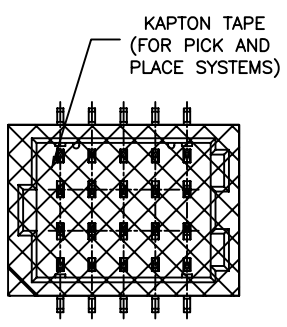


SPECIFICATIONS

Current Rating: 1A AC,DC
 Voltage Rating: 50V AC,DC
 Temperature Range: -25°C ~ +85°C
 Contact Resistance: 20mΩ Max.
 Insulation Resistance: 100MΩ Min.
 Withstanding Voltage: 500V AC/minute
 Pin Material: Phosphor Bronze/Gold-flash
 Solder Tabs: Brass/Tin-plated or Gold-flash
 Wafer: Nylon 6T,UL94V-0
 Cap: Nylon 6T,UL94V-0,Natural(Beige)
 Color: Natural(Beige)



Circuit No.	Dimensions	
	A	B
2X05P	4.00	7.30
2X06P	5.00	8.30
2X08P	7.00	10.30
2X10P	9.00	12.30
2X12P	11.00	14.30
2X15P	14.00	17.30
2X20P	19.00	22.30
2X25P	24.00	27.30



2X05P

PCB LAYOUT

				燦達電子工業股份有限公司 JOINT TECH ELECTRONIC IND. CO., LTD.	
UNIT	SCALE	SHEET	TITLE:		
mm	1 : 1	1 of 2	1.00mm PITCH 180° WAFER-SMT TYPE, DUAL ROW		
DRAWN BY	APPROVED BY				
董正一	董正一				
2003.04.04	2003.04.04				
GENERAL TOLERANCE			DRAW NO. :		
B3	EN1007020220	2010.07.02	陳敏	A1001WV-S-2XNP	
B4	EN1203080049	2012.03.26	謝金發	REV. CO	
B5	EN1505270002	2015.05.27	劉建芳		
C0	EN1601260001	2016.01.28	郭木思		
REV.	DESCRIPTION	DATE	NAME		

X-ON Electronics

Largest Supplier of Electrical and Electronic Components

Click to view similar products for [Headers & Wire Housings](#) category:

Click to view products by [Joint Tech](#) manufacturer:

Other Similar products are found below :

[57102-F02-18ULF](#) [58102-G61-06LF](#) [0009485154](#) [009176003701906](#) [0050291907](#) [02.125.8002.8](#) [609-3404](#) [61062-3](#) [622-0430](#) [622-3653LF](#)
[63453-116](#) [636-1030](#) [636-1427](#) [636-3427](#) [636-4007](#) [641938-9](#) [644827-2](#) [65495-038](#) [65692-001LF](#) [65781-018](#) [65781-047](#) [65817-010LF](#)
[65817-015LF](#) [66207-023LF](#) [67016-026LF](#) [67095-007LF](#) [68631-112](#) [68645-018](#) [68648-049](#) [699319-000](#) [70.362.1628.0](#) [70-4210](#) [70-4226B](#)
[70-4853B](#) [707-5020](#) [707-5028](#) [71.350.2428.0](#) [71961-016LF](#) [733-134](#) [754199-000](#) [760-3052](#) [787-8014-00](#) [FCN-367T-T012/H](#) [80.063.4001.1](#)
[800-90-010-10-002000](#) [801-43-002-10-013000](#) [801-43-006-10-002000](#) [803-41-018-10-001000](#) [803-43-014-20-001000](#) [803-43-024-10-001000](#)