

P/N LEGEND

① Series No.	A1007	WR-S-XP	④
② Connector type: WR=Right angle			
③ Mounting type: S=SMT without boss			
④ No. of circuits			

SPECIFICATIONS
 Current Rating: 1A AC,DC
 Voltage Rating: 100V AC,DC
 Temperature Range: -25°C ~ +85°C
 Contact Resistance: 30mΩ Max.
 Insulation Resistance: 500MΩ Min.
 Withstanding Voltage: 500V AC/minute
 Shell: Phosphor Bronze/Tin-plated
 Pin: Phosphor Bronze/Contacts/Gold-plated
 3u" and Solder tabs/Gold-flash
 Material: LCP,U194V-0
 Color: Natural(Beige)

PART NO.	Dimensions		
	A	B	C
A1007WR-S-08P	7.00	11.55	11.95
A1007WR-S-14P	13.00	17.55	17.95
A1007WR-S-20P	19.00	23.55	23.95
A1007WR-S-30P	29.00	33.55	33.95

REV.	DESCRIPTION	DATE	NAME
B5	EN1705150001	2017.03.15	周傑堯
B4	EN1504150001	2015.04.15	黃振奇
B3	EN1209030291	2012.11.13	陳錦慶
B2	EN1203230081	2012.05.04	程夢燕

UNIT	SCALE	SHEET
mm	1 : 1	1 of 2

DRAWN BY	APPROVED BY	DATE	GENERAL TOLERANCE
周傑堯	黃正一	2003.04.22	2003.04.22

ANGLE	NAME
X.XX±0.15	X.XX±0.15
X.XX±0.25	X.XX±0.25

DRAW NO.: A1007WR-S-XP

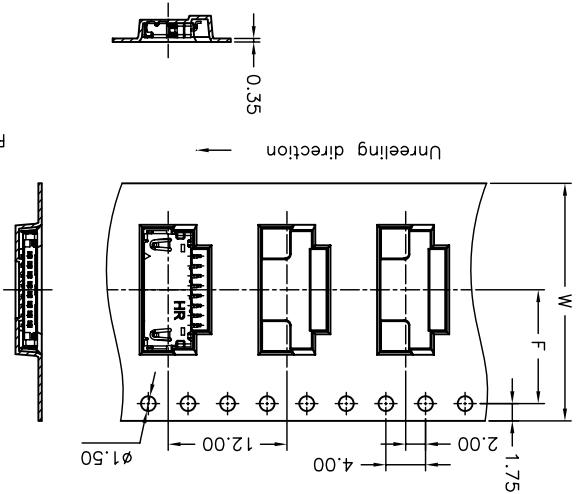
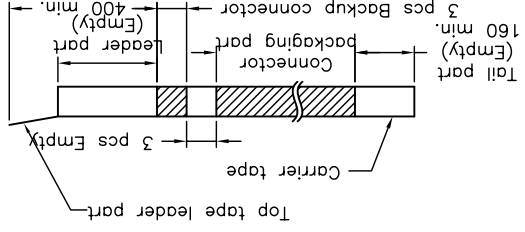
REV. B5

燦達電子工業股份有限公司
 JOINT TECH ELECTRONIC IND. CO., LTD.

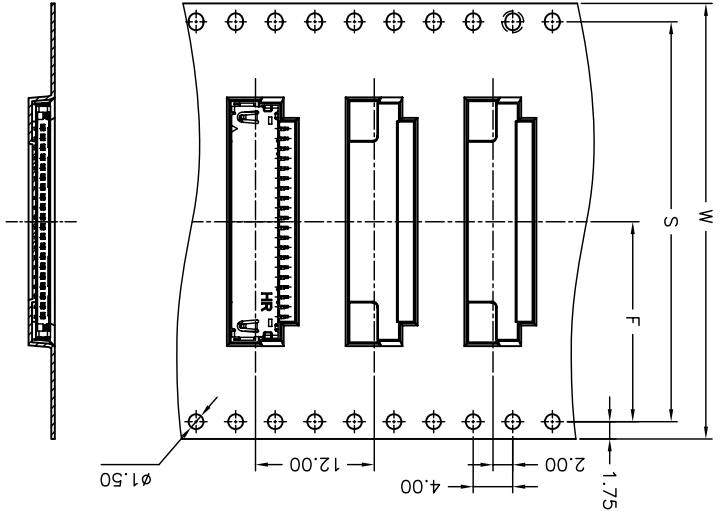
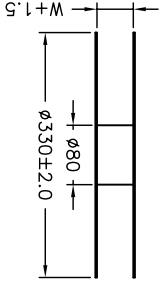
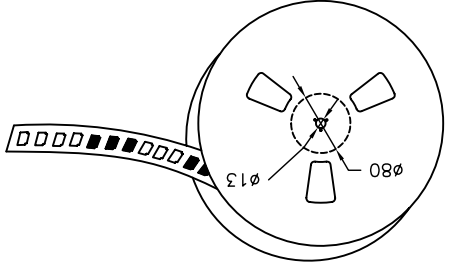
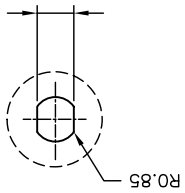
1.00mm PITCH
 90° WAFER-SMT TYPE



Number of Contacts	WFO.3	FEO.1	SFO.1	Q'ty/Reel
08P	24	11.50	2,000	
14P	32	14.20	2,000	
20P	44	20.20	2,000	
30P	56	26.20	2,000	



08 contacts

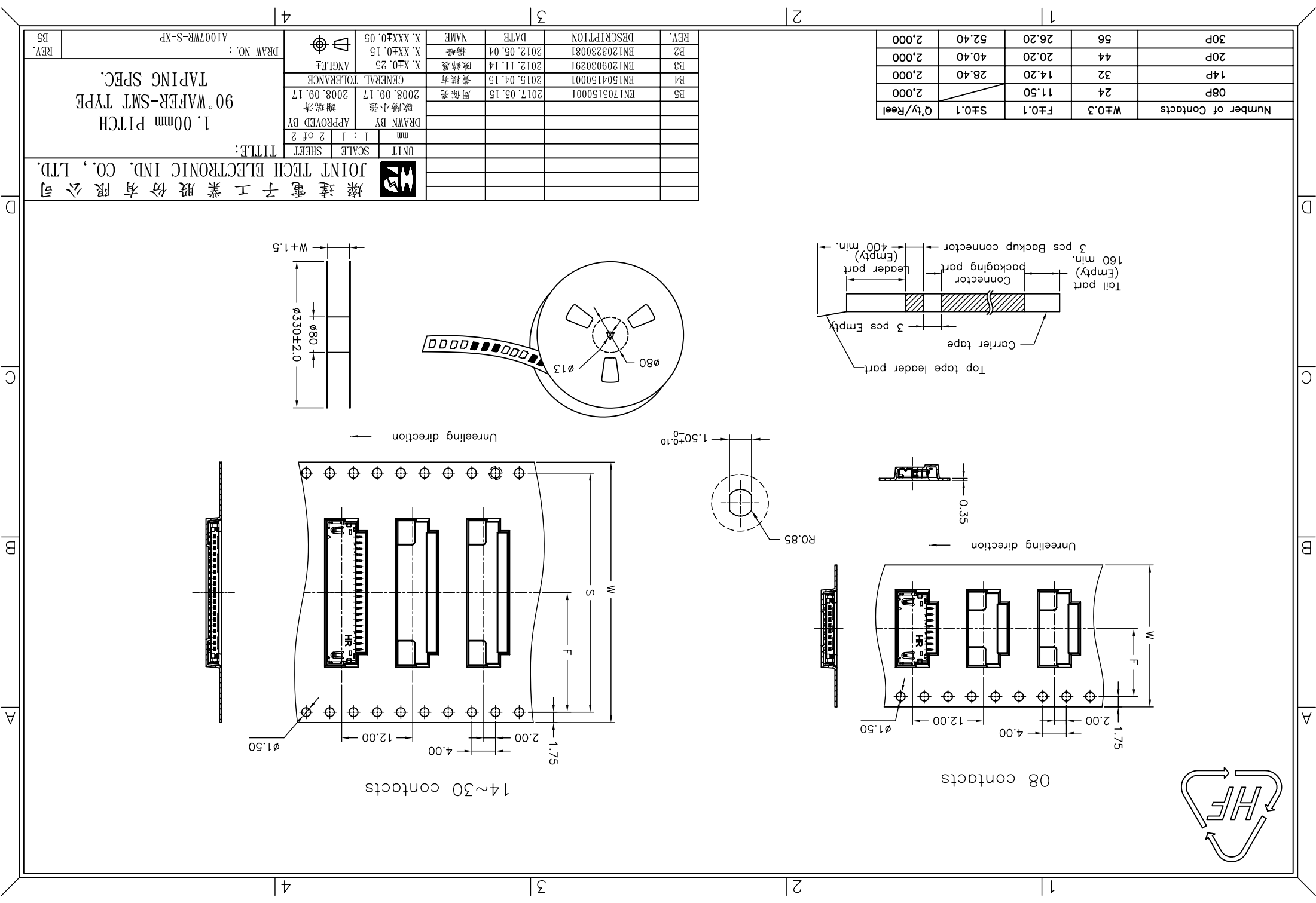


14~30 contacts

REV.	DESCRIPTION	DATE	NAME	X.XXX±0.05	ANGLE	DRAWN BY	APPROVED BY	UNIT	SCALE	SHEET	TITLE:
B5	EN1705150001	2017.05.15	周傑亮	X.XX±0.15	2008.09.17	歐陽小強	謝瑞清	mm	1 : 1	2 of 2	1.00mm PITCH
B4	EN1504150001	2015.04.15	黃煥奇	X.XX±0.25	2008.09.17	歐陽小強	謝瑞清				90° WAFER-SMT TYPE
B3	EN1209030291	2012.11.14	陳錦慶								TAPING SPEC.
B2	EN1203230081	2012.05.04	楊峰								
B1											

DRAW NO.: A1007WR-S-XP
REV. B5

燦達電子工業股份有限公司
JOINT TECH ELECTRONIC IND. CO., LTD.



X-ON Electronics

Largest Supplier of Electrical and Electronic Components

Click to view similar products for [Headers & Wire Housings](#) category:

Click to view products by [Joint Tech](#) manufacturer:

Other Similar products are found below :

[95000-104TRLF](#) [10135584-644402LF](#) [DF62W-EP2022PCA](#) [95000-106TRLF](#) [DF62W-2022SCA](#) [DF62W-EP2022PC](#) [2203348](#) [DF62W-2022SC](#) [1084018](#) [1029039](#) [1084017](#) [802-10-012-10-002000](#) [1112640](#) [1112639](#) [891-007-9SS-BST1T](#) [000-34000](#) [0008550134](#) [0009482033](#) [0009507031](#) [57102-F02-18ULF](#) [57102-S06-03LF](#) [57202-S52-04LF](#) [PCN6-15S-2.5E](#) [0039019024](#) [58102-G61-06LF](#) [582553-1](#) [0009485154](#) [0009508121](#) [0022285053](#) [0050291907](#) [018731A](#) [LY20-4P-DT1-P1E-BR](#) [02.125.8002.8](#) [60101931](#) [60598-1 \(Cut Strip\)](#) [M1625-3R/100](#) [61062-3](#) [61082-181009](#) [CSU011177004](#) [636-1427](#) [638009-1](#) [641938-9](#) [641991-4](#) [644168-1](#) [644827-2](#) [647662-1](#) [65039-019ELF](#) [65692-001LF](#) [65781-018](#) [65781-047](#)