

REV. A1	DESCRIPTION EN1008200220	DATE 2010.10.06	NAME 陳錦展	X.XX±0.15	ANGLE
				X.XX±0.05	ANGLE
				GENERAL TOLERANCE	
				2009.02.18	2009.02.18
				歐陽小強	謝瑞濤
				DRAWN BY	
				APPROVED BY	
				1 : 1	1 of 2
				mm	
				SCALE	SHEET

燦達電子工業股份有限公司  
JOINT TECH ELECTRONIC IND. CO., LTD.

1.00mm PITCH  
180° WAFER-SMT TYPE

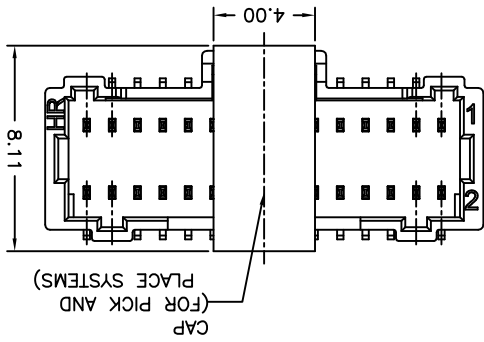
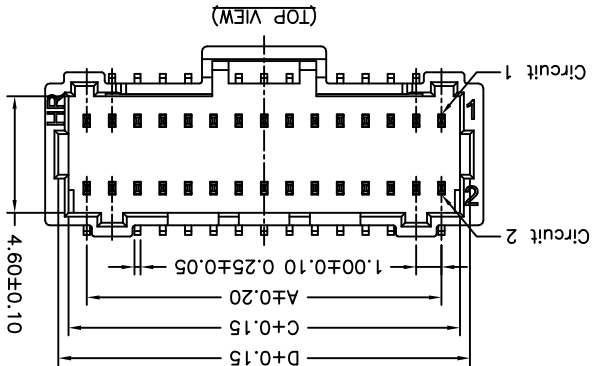
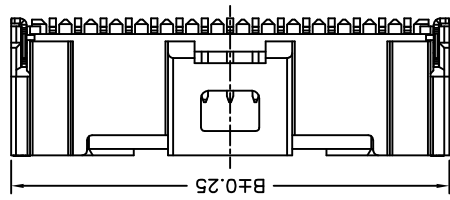
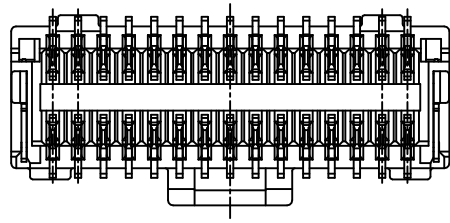
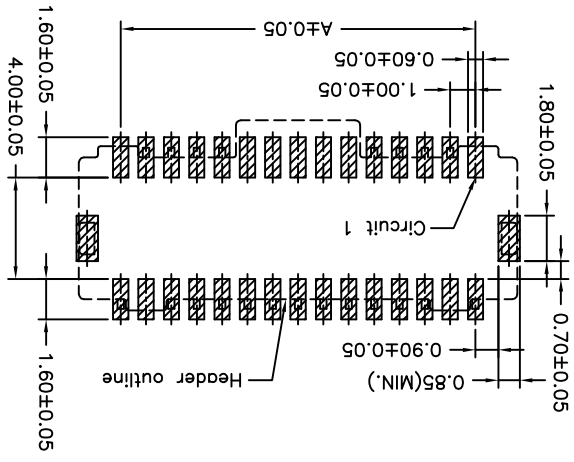
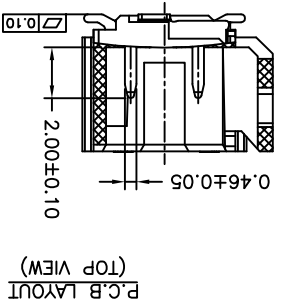
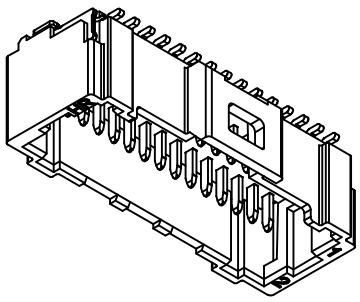
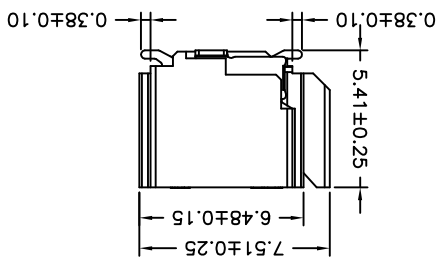
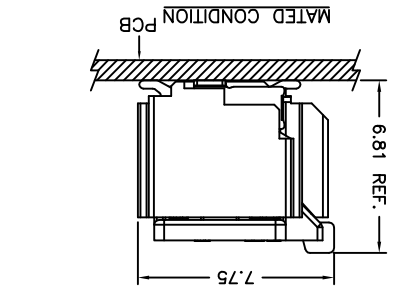
REV. A1

DRAW NO.: A1014WVA-S-2XNP

Dimensions		No.			
Circuit		A	B	C	D
2X08P	7.00	10.30	8.45	9.25	
2X10P	9.00	12.30	10.45	11.25	
2X15P	14.00	17.30	15.45	16.25	
2X16P	15.00	18.30	16.45	17.25	
2X20P	19.00	22.30	20.45	21.25	
2X25P	24.00	27.30	25.45	26.25	

**SPECIFICATIONS**  
 Current Rating: 0.8A AC,DC  
 Voltage Rating: 50V AC,DC  
 Temperature Range: -25°C ~ +85°C  
 Contact Resistance: 20mΩ Max.  
 Insulation Resistance: 100MΩ Min.  
 Withstanding Voltage: 250V AC/minute  
 Pin Material: Phosphor Bronze  
 Solder Tabs: Brass  
 Material: Nylon 6T,UL94V-0  
 Cap: Nylon 6T,UL94V-0,Natural(Beige)  
 Color: Natural(Beige)

**P/N LEGEND**  
 A1014 WVA-S-2XNP XXX  
 ① Series No.  
 ② Connector type: WVA=Vertical A Type  
 ③ Mounting type: S=SMT without boss  
 ④ No. of circuits  
 ⑤ Option code:  
 Blank=Contacts/Gold-flash and  
 Solder tabs/Matte Tin-plated



## X-ON Electronics

Largest Supplier of Electrical and Electronic Components

*Click to view similar products for [Headers & Wire Housings](#) category:*

*Click to view products by [Joint Tech](#) manufacturer:*

Other Similar products are found below :

[95000-104TRLF](#) [10135584-644402LF](#) [DF62W-EP2022PCA](#) [95000-106TRLF](#) [DF62W-2022SCA](#) [DF62W-EP2022PC](#) [2203348](#) [DF62W-2022SC](#) [1084018](#) [1029039](#) [1084017](#) [802-10-012-10-002000](#) [1112640](#) [1112639](#) [891-007-9SS-BST1T](#) [000-34000](#) [0008550134](#) [0009482033](#) [0009507031](#) [57102-F02-18ULF](#) [57102-S06-03LF](#) [57202-S52-04LF](#) [PCN6-15S-2.5E](#) [0039019024](#) [58102-G61-06LF](#) [582553-1](#) [0009485154](#) [0009508121](#) [0022285053](#) [0050291907](#) [018731A](#) [LY20-4P-DT1-P1E-BR](#) [02.125.8002.8](#) [60101931](#) [60598-1 \(Cut Strip\)](#) [M1625-3R/100](#) [61062-3](#) [61082-181009](#) [CSU011177004](#) [636-1427](#) [638009-1](#) [641938-9](#) [641991-4](#) [644168-1](#) [644827-2](#) [647662-1](#) [65039-019ELF](#) [65692-001LF](#) [65781-018](#) [65781-047](#)