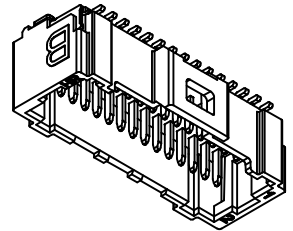
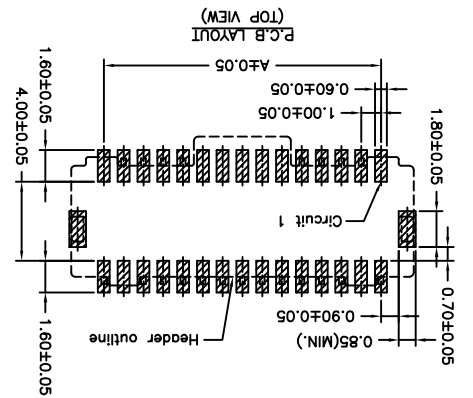
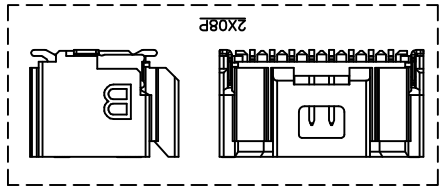
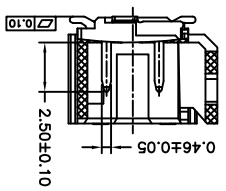
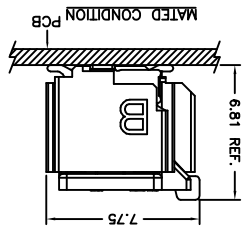
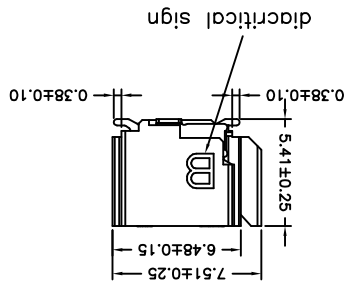
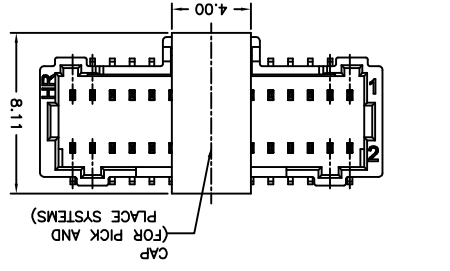
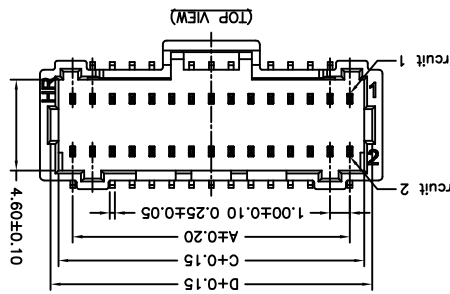
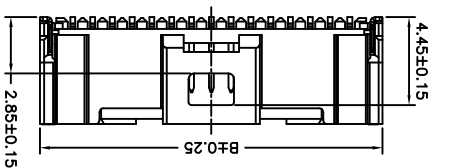
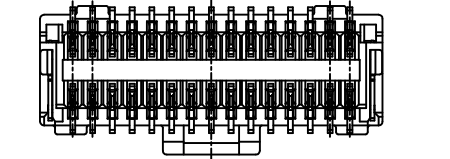
 燦達電子工業股份有限公司 JOINT TECH ELECTRONIC IND. CO., LTD.	UNIT	SCALE	SHEET	
	mm	1 : 1	1 of 2	
	DRAWN BY	APPROVED BY	TITLE:	
	歐陽小強	謝瑞清	180° WAFER-SMT TYPE 1.00mm PITCH	
REV.	DESCRIPTION	DATE	NAME	DRY NO.:
A2	EN1008200220	2010.10.06	歐錦展	A1014WVB-S-2XNP
X.XX±0.15			X.XX±0.15	
X.XX±0.25			X.XX±0.25	
GENERAL TOLERANCE		ANGLE		
2009.09.01		2009.09.01		



Circuit	Dimensions			
	No.	A	B	C
2X08P	7.00	10.30	8.45	9.25
2X10P	9.00	12.30	10.45	11.25
2X15P	14.00	17.30	15.45	16.25
2X16P	15.00	18.30	16.45	17.25
2X20P	19.00	22.30	20.45	21.25
2X25P	24.00	27.30	25.45	26.25

SPECIFICATIONS
 Current Rating: 0.8A AC,DC
 Voltage Rating: 50V AC,DC
 Temperature Range: -25°C ~ +85°C
 Contact Resistance: 20mΩ Max.
 Insulation Resistance: 100MΩ Min.
 Withstanding Voltage: 250V AC/minute
 Pin Material: Phosphor Bronze
 Solder Tabs: Brass
 Material: Nylon 6T,UL94V-0
 Cap: Nylon 6T,UL94V-0,Natural(Beige)
 Color: Natural(Beige)

P/N LEGEND
 A1014 WVB-S-2XNP XXX
 ① Series No.
 ② Connector type: WVA=Vertical B Type
 ③ Mounting type: S=SMT without boss
 ④ No. of circuits
 ⑤ Option code:
 Blank=Contacts/Gold-flash and
 Solder tabs/Matte Tin-plated

X-ON Electronics

Largest Supplier of Electrical and Electronic Components

Click to view similar products for [Headers & Wire Housings](#) category:

Click to view products by [Joint Tech](#) manufacturer:

Other Similar products are found below :

[95000-104TRLF](#) [10135584-644402LF](#) [DF62W-EP2022PCA](#) [95000-106TRLF](#) [DF62W-2022SCA](#) [DF62W-EP2022PC](#) [2203348](#) [DF62W-2022SC](#) [1084018](#) [1029039](#) [1084017](#) [802-10-012-10-002000](#) [1112640](#) [1112639](#) [891-007-9SS-BST1T](#) [000-34000](#) [0008550134](#) [0009482033](#) [0009507031](#) [57102-F02-18ULF](#) [57102-S06-03LF](#) [57202-S52-04LF](#) [PCN6-15S-2.5E](#) [0039019024](#) [58102-G61-06LF](#) [582553-1](#) [0009485154](#) [0009508121](#) [0022285053](#) [0050291907](#) [018731A](#) [LY20-4P-DT1-P1E-BR](#) [02.125.8002.8](#) [60101931](#) [60598-1 \(Cut Strip\)](#) [M1625-3R/100](#) [61062-3](#) [61082-181009](#) [CSU011177004](#) [636-1427](#) [638009-1](#) [641938-9](#) [641991-4](#) [644168-1](#) [644827-2](#) [647662-1](#) [65039-019ELF](#) [65692-001LF](#) [65781-018](#) [65781-047](#)