

REV.	A1	EN1504230008	2015.05.27	劉建芳	X.XX±0.25	ANGLE
A0	NEW RELEASE		2012.06.26	陳敏	X.XX±0.15	
					X.XX±0.05	
DRAWN BY		APPROVED BY		GENERAL TOLERANCE		
mm		2012.06.26		2012.06.26		
1 : 1		1 of 2		陳敏		
SCALE		SHEET		TITLE:		
UNIT		SCALE		UNIT TECH ELECTRONIC IND. CO., LTD.		
1 : 1		1 of 2		燦達電子工業股份有限公司		
mm		2012.06.26		90° WAFER-SMT TYPE,		
1 : 1		1 of 2		1.00mm PITCH		
SCALE		SHEET		DRAWN NO. :		
1 : 1		1 of 2		A1024WRD-S-XPXXXXXXXXXX		
UNIT		SCALE		REV.		
1 : 1		1 of 2		A1		

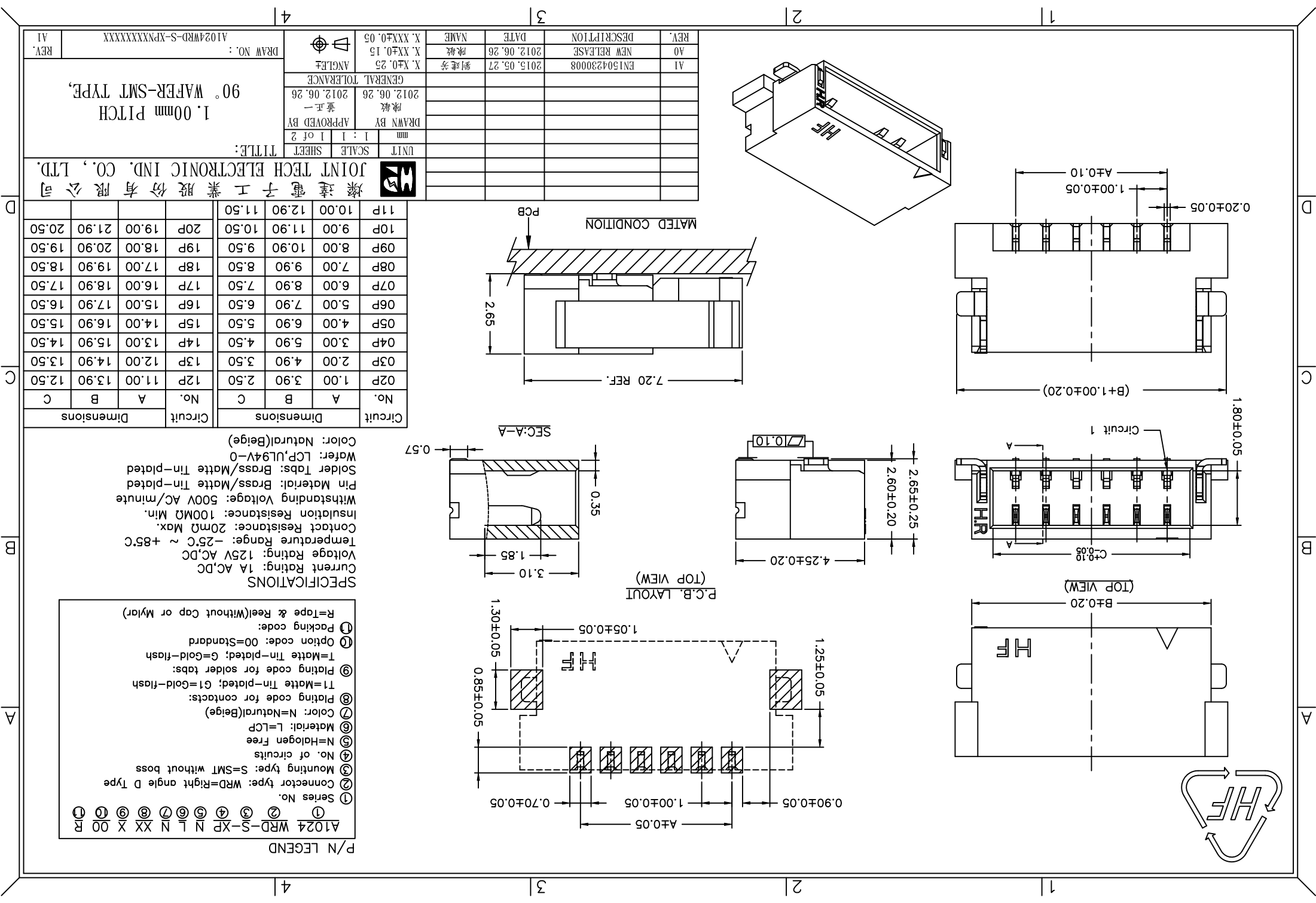
Circuit No.	Dimensions		
	A	B	C
02P	1.00	3.90	2.50
03P	2.00	4.90	3.50
04P	3.00	5.90	4.50
05P	4.00	6.90	5.50
06P	5.00	7.90	6.50
07P	6.00	8.90	7.50
08P	7.00	9.90	8.50
09P	8.00	10.90	9.50
10P	9.00	11.90	10.50
11P	10.00	12.90	11.50

Circuit No.	Dimensions		
	A	B	C
12P	11.00	13.90	12.50
13P	12.00	14.90	13.50
14P	13.00	15.90	14.50
15P	14.00	16.90	15.50
16P	15.00	17.90	16.50
17P	16.00	18.90	17.50
18P	17.00	19.90	18.50
19P	18.00	20.90	19.50
20P	19.00	21.90	20.50

**SPECIFICATIONS**  
 Current Rating: 1A AC,DC  
 Voltage Rating: 125V AC,DC  
 Temperature Range: -25°C ~ +85°C  
 Contact Resistance: 20mΩ Max.  
 Insulation Resistance: 100MΩ Min.  
 Withstanding Voltage: 500V AC/minute  
 Pin Material: Brass/Matte Tin-plated  
 Solder Tabs: Brass/Matte Tin-plated  
 Wafer: LCP,U194V-0  
 Color: Natural(Beige)

**P/N LEGEND**  
 ① Series No.  
 ② Connector type: WRD=Right angle D Type  
 ③ Mounting type: S=SMT without boss  
 ④ No. of circuits  
 ⑤ N=Halogen Free  
 ⑥ Material: L=LCP  
 ⑦ Color: N=Natural(Beige)  
 ⑧ Plating code for contacts:  
 T1=Matte Tin-plated; C1=Gold-flash  
 ⑨ Plating code for solder tabs:  
 T=Matte Tin-plated; G=Gold-flash  
 ⑩ Option code: 00=Standard  
 ⑪ Packing code:  
 R=Tape & Reel(Without Cap or Mylar)

P/N LEGEND



## X-ON Electronics

Largest Supplier of Electrical and Electronic Components

*Click to view similar products for [Headers & Wire Housings](#) category:*

*Click to view products by [Joint Tech](#) manufacturer:*

Other Similar products are found below :

[95000-104TRLF](#) [10135584-644402LF](#) [DF62W-EP2022PCA](#) [95000-106TRLF](#) [DF62W-2022SCA](#) [DF62W-EP2022PC](#) [2203348](#) [DF62W-2022SC](#) [1084018](#) [1029039](#) [1084017](#) [802-10-012-10-002000](#) [1112640](#) [1112639](#) [891-007-9SS-BST1T](#) [000-34000](#) [0008550134](#) [0009482033](#) [0009507031](#) [57102-F02-18ULF](#) [57102-S06-03LF](#) [57202-S52-04LF](#) [PCN6-15S-2.5E](#) [0039019024](#) [58102-G61-06LF](#) [582553-1](#) [0009485154](#) [0009508121](#) [0022285053](#) [0050291907](#) [018731A](#) [LY20-4P-DT1-P1E-BR](#) [02.125.8002.8](#) [60101931](#) [60598-1 \(Cut Strip\)](#) [M1625-3R/100](#) [61062-3](#) [61082-181009](#) [CSU011177004](#) [636-1427](#) [638009-1](#) [641938-9](#) [641991-4](#) [644168-1](#) [644827-2](#) [647662-1](#) [65039-019ELF](#) [65692-001LF](#) [65781-018](#) [65781-047](#)