

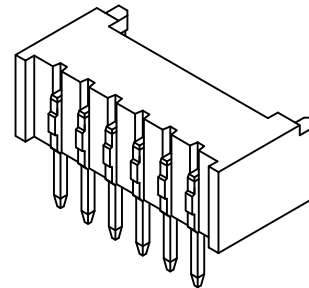
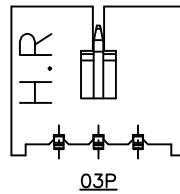
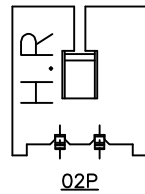
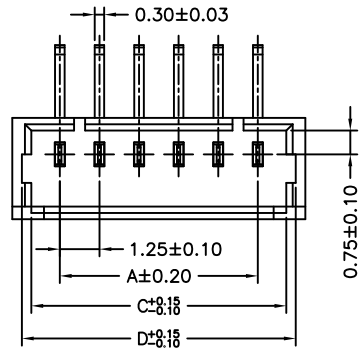


P/N LEGEND

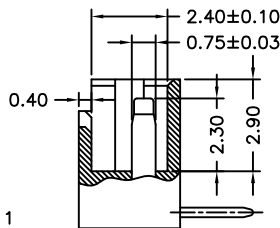
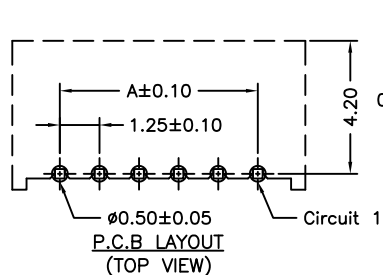
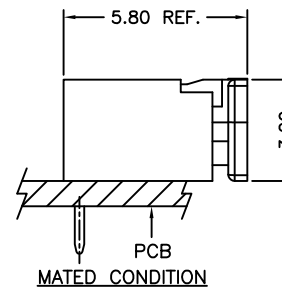
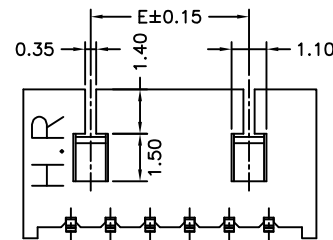
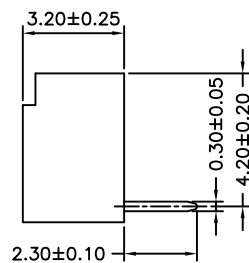
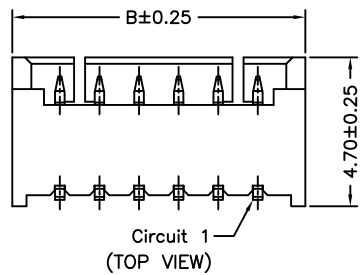
- A1250 WR-XP N X X T1 N 00 B
 ① ② ③ ④ ⑤ ⑥ ⑦ ⑧ ⑨ ⑩
- ① Series No.
 - ② Connector type: WR=Right Angle
 - ③ No. of circuits
 - ④ N=Halogen Free
 - ⑤ Material: L=LCP-V0 ; 6=Nylon 6T
 - ⑥ Color: B=Black N=Natural
 - ⑦ Plating code for contacts: T1=Tin-plated
 - ⑧ Plating code: N=Non-plating
 - ⑨ Option code: 00=Standard
 - ⑩ Packing code: B=Tray

SPECIFICATIONS

Current Rating: 1A AC,DC
 Voltage Rating: 125V AC,DC
 Temperature Range: -25°C ~ +85°C
 Contact Resistance: 20mΩ Max.
 Insulation Resistance: 100MΩ Min.
 Withstanding Voltage: 500V AC/minute
 Pin MatTl: Phosphor Bronze/Tin-plated



Circuit No.	Dimensions				
	A	B	C	D	E
02P	---	4.25	3.05	3.65	---
03P	2.50	5.50	4.30	4.90	---
04P	3.75	6.75	5.55	6.15	2.50
05P	5.00	8.00	6.80	7.40	3.75
06P	6.25	9.25	8.05	8.65	5.00
07P	7.50	10.50	9.30	9.90	6.25
08P	8.75	11.75	10.55	11.15	7.50
09P	10.00	13.00	11.80	12.40	8.75
10P	11.25	14.25	13.05	13.65	10.00
11P	12.50	15.50	14.30	14.90	11.25
12P	13.75	16.75	15.55	16.15	12.50
13P	15.00	18.00	16.80	17.40	13.75
14P	16.25	19.25	18.05	18.65	15.00
15P	17.50	20.50	19.30	19.90	16.25
16P	18.75	21.75	20.55	21.15	17.50
17P	20.00	23.00	21.80	22.40	18.75
18P	21.25	24.25	23.05	23.65	20.00



				燦達電子工業股份有限公司 JOINT TECH ELECTRONIC IND. CO., LTD.	
UNIT		SCALE	SHEET		TITLE:
mm		1 : 1	1 of 1		
DRAWN BY		APPROVED BY		1.25mm PITCH 90° WAFER	
周傑亮		張子波			
2013.10.26		2013.10.26		DRAW NO. : A1250WR-XPNXXXXXXXXX	
GENERAL TOLERANCE					
A1	CHANGE SPEC	2014.10.16	黃培軍	X.X±0.25	ANGLE±
A0	NEW RELEASE	2013.10.26	周傑亮	X.XX±0.15	
REV.	DESCRIPTION	DATE	NAME	X.XXX±0.05	

X-ON Electronics

Largest Supplier of Electrical and Electronic Components

Click to view similar products for [Headers & Wire Housings](#) category:

Click to view products by [Joint Tech](#) manufacturer:

Other Similar products are found below :

[57102-F02-18ULF](#) [58102-G61-06LF](#) [0009485154](#) [009176003701906](#) [0050291907](#) [02.125.8002.8](#) [609-3404](#) [61062-3](#) [622-0430](#) [622-3653LF](#)
[63453-116](#) [636-1030](#) [636-1427](#) [636-3427](#) [636-4007](#) [641938-9](#) [644827-2](#) [65495-038](#) [65692-001LF](#) [65781-018](#) [65781-047](#) [65817-010LF](#)
[65817-015LF](#) [66207-023LF](#) [67016-026LF](#) [67095-007LF](#) [68631-112](#) [68645-018](#) [68648-049](#) [699319-000](#) [70.362.1628.0](#) [70-4210](#) [70-4226B](#)
[70-4853B](#) [707-5020](#) [707-5028](#) [71.350.2428.0](#) [71961-016LF](#) [733-134](#) [754199-000](#) [760-3052](#) [787-8014-00](#) [FCN-367T-T012/H](#) [80.063.4001.1](#)
[800-90-001-10-001000](#) [800-90-010-10-002000](#) [801-43-002-10-013000](#) [801-43-006-10-002000](#) [803-41-018-10-001000](#) [803-43-014-20-](#)
[001000](#)