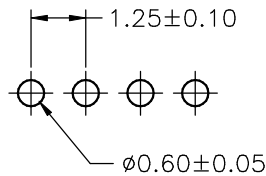
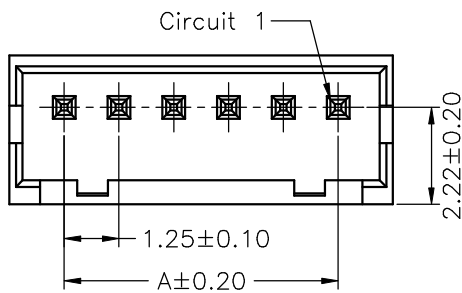


SPECIFICATIONS

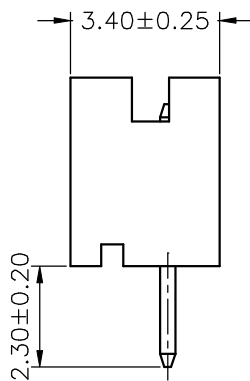
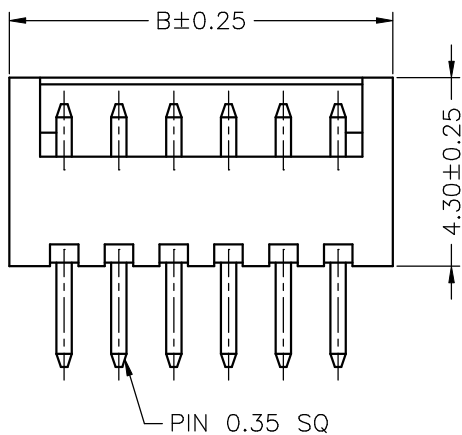
Current Rating: 1A AC,DC
 Voltage Rating: 150V AC,DC
 Temperature Range: -25°C ~ +85°C
 Contact Resistance: 30mΩ Max.
 Insulation Resistance: 500MΩ Min.
 Withstanding Voltage: 500V AC/minute
 Pin Material: Brass/Tin-plated
 Pin Material: Nylon 66,UL94V-0
 Pantone Color: 7529C~7530C

Ordering Information & Dimensions

| PART NO. | Dimensions | |
|-------------|------------|-------|
| | A | B |
| A1252WV-02P | 1.25 | 3.75 |
| A1252WV-03P | 2.50 | 5.00 |
| A1252WV-04P | 3.75 | 6.25 |
| A1252WV-05P | 5.00 | 7.50 |
| A1252WV-06P | 6.25 | 8.75 |
| A1252WV-07P | 7.50 | 10.00 |
| A1252WV-08P | 8.75 | 11.25 |
| A1252WV-09P | 10.00 | 12.50 |
| A1252WV-10P | 11.25 | 13.75 |
| A1252WV-11P | 12.50 | 15.00 |
| A1252WV-12P | 13.75 | 16.25 |
| A1252WV-13P | 15.00 | 17.50 |
| A1252WV-14P | 16.25 | 18.75 |
| A1252WV-15P | 17.50 | 20.00 |



P.C.B. LAYOUT



| | | | | | |
|------|-------------|-------------------|-------------|--------------------------------------|---------------------------------------|
| | | | | JOINT TECH ELECTRONIC IND. CO., LTD. | |
| | | | | JOY DAY INDUSTRIAL CO., LTD. | |
| | | UNIT | SCALE | SHEET | TITLE: |
| | | mm | | 1 of 1 | 1.25mm PITCH 180° SINGLE ROW WAFER |
| | | DRAWN BY | APPROVED BY | | |
| | | 董正一 | 董正一 | | |
| | | 2001.02.01 | 2001.02.01 | | |
| | | GENERAL TOLERANCE | | | |
| | | X. X±0.25 | ANGLE± | | |
| B0 | NEW RELEASE | 2006.05.31 | X. XX±0.15 | | DRAW NO. : |
| REV. | DESCRIPTION | DATE | X. XXX±0.05 | | A1252WV-XP |
| | | | | | REV. B0 |

X-ON Electronics

Largest Supplier of Electrical and Electronic Components

Click to view similar products for [Headers & Wire Housings](#) category:

Click to view products by [Joint Tech](#) manufacturer:

Other Similar products are found below :

[57102-F02-18ULF](#) [58102-G61-06LF](#) [0009485154](#) [009176003701906](#) [0050291907](#) [02.125.8002.8](#) [609-3404](#) [61062-3](#) [622-0430](#) [622-3653LF](#)
[63453-116](#) [636-1030](#) [636-1427](#) [636-3427](#) [636-4007](#) [641938-9](#) [644827-2](#) [65495-038](#) [65692-001LF](#) [65781-018](#) [65781-047](#) [65817-010LF](#)
[65817-015LF](#) [66207-023LF](#) [67016-026LF](#) [67095-007LF](#) [68631-112](#) [68645-018](#) [68648-049](#) [699319-000](#) [70.362.1628.0](#) [70-4210](#) [70-4226B](#)
[70-4853B](#) [707-5020](#) [707-5028](#) [71.350.2428.0](#) [71961-016LF](#) [733-134](#) [754199-000](#) [760-3052](#) [787-8014-00](#) [FCN-367T-T012/H](#) [80.063.4001.1](#)
[800-90-001-10-001000](#) [800-90-010-10-002000](#) [801-43-002-10-013000](#) [801-43-006-10-002000](#) [803-41-018-10-001000](#) [803-43-014-20-](#)
[001000](#)