

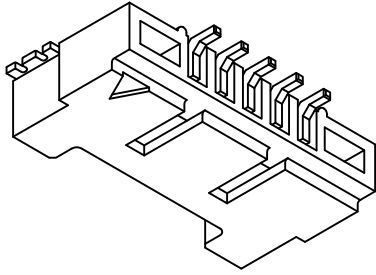
| | | | | | | | | | | |
|------|----|-------------|---------------|------|------------|------|----|-----------|-------------------|------------|
| REV. | B3 | DESCRIPTION | EN10011900040 | DATE | 2011.06.08 | NAME | 陈敏 | X.XX±0.15 | ANGLE | |
| | | | | | | | | X.XX±0.05 | | |
| | | | | | | | | | GENERAL TOLERANCE | |
| | | | | | | | | | 2004.10.12 | 2004.10.12 |
| | | | | | | | | | 修正一 | |
| | | | | | | | | | APPROVED BY | |
| | | | | | | | | | DRAWN BY | |
| | | | | | | | | | 1 : 1 | 1 of 2 |
| | | | | | | | | | mm | |
| | | | | | | | | | SCALE | SHEET |
| | | | | | | | | | TITLE: | |


燦達電子工業股份有限公司
JOINT TECH ELECTRONIC IND. CO., LTD.

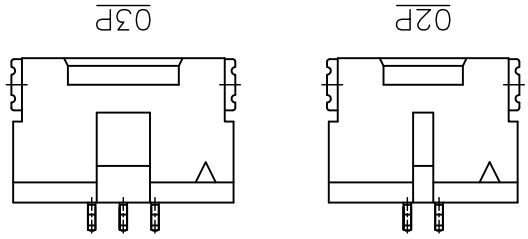
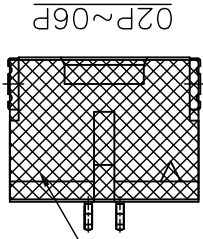
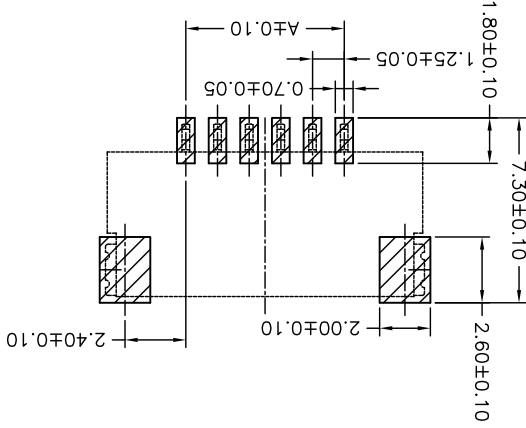
| Circuit | Dimensions | | Circuit No. | Dimensions | |
|---------|------------|-------|-------------|------------|-------|
| | A | B | | A | B |
| 10P | 11.25 | 17.45 | 30P | 36.25 | 42.45 |
| 09P | 10.00 | 16.20 | 25P | 30.00 | 36.20 |
| 08P | 8.75 | 14.95 | 21P | 24.00 | 31.20 |
| 07P | 7.50 | 13.70 | 20P | 23.75 | 29.95 |
| 06P | 6.25 | 12.45 | 15P | 17.50 | 23.70 |
| 05P | 5.00 | 11.20 | 14P | 16.25 | 22.45 |
| 04P | 3.75 | 9.95 | 13P | 15.00 | 21.20 |
| 03P | 2.50 | 8.70 | 12P | 13.75 | 19.95 |
| 02P | 1.25 | 7.45 | 11P | 12.50 | 18.70 |
| | | | No. A | B | |
| | | | Dimensions | | |

SPECIFICATIONS
 Current Rating: 1A AC,DC
 Voltage Rating: 150V AC,DC
 Temperature Range: -25°C ~ +85°C
 Contact Resistance: 30mΩ Max.
 Insulation Resistance: 500MΩ Min.
 Withstanding Voltage: 500V AC/minute
 Pin Material: Brass
 Solder Tabs: Brass
 Material: Nylon 6T,UL94V-0
 Color: Natural(Beige)

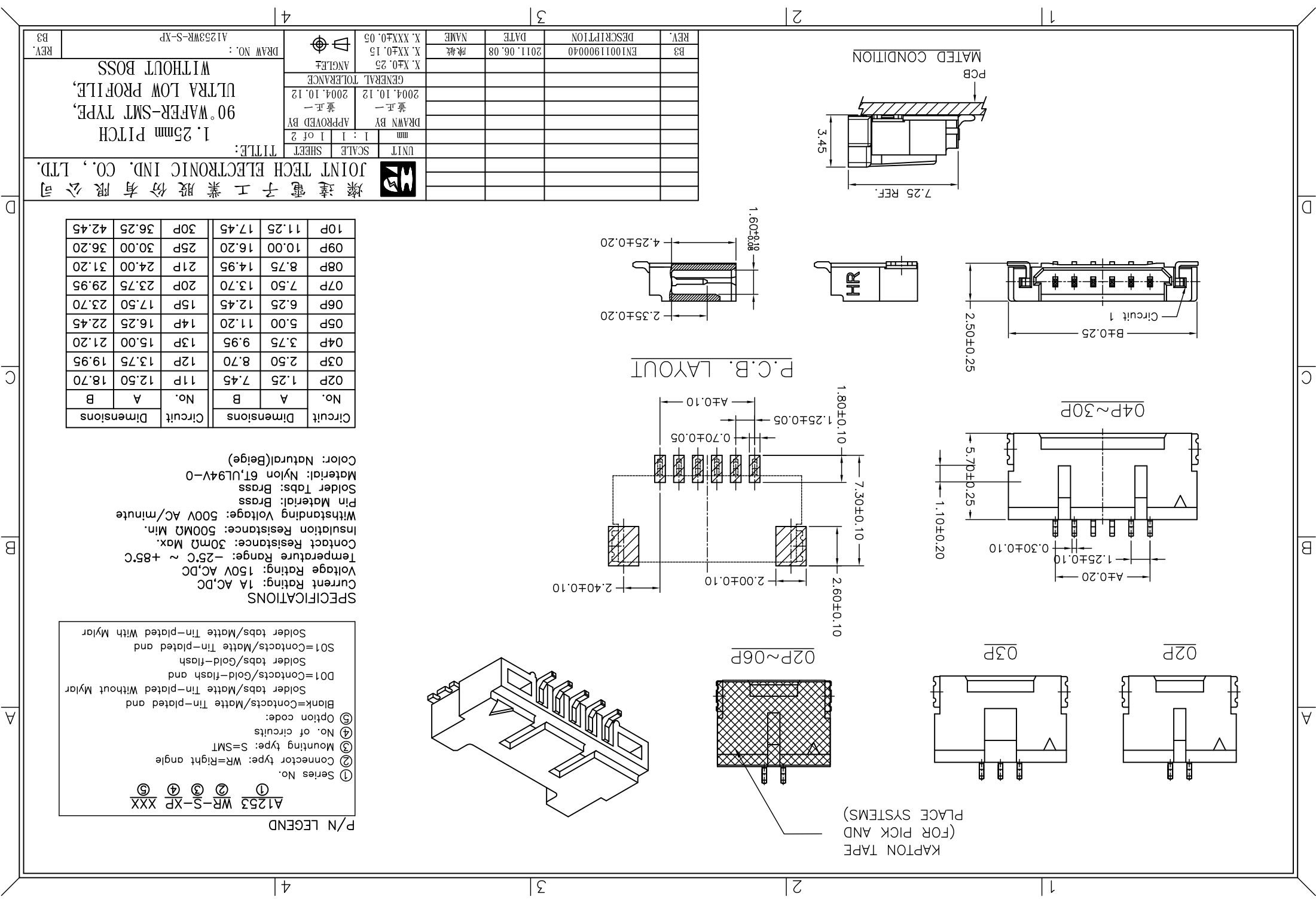
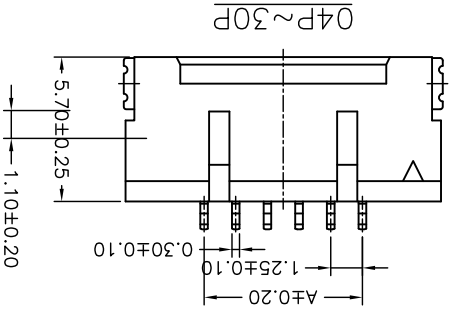
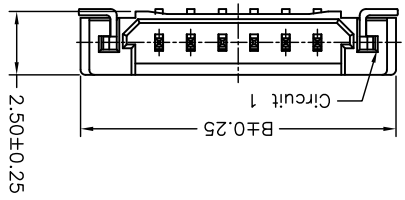
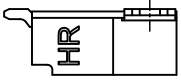
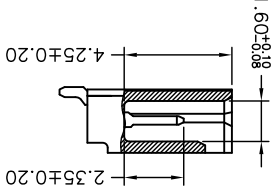
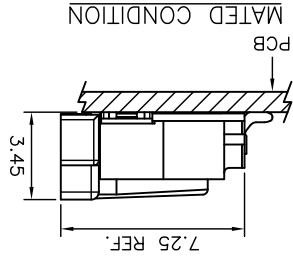
P/N LEGEND
 A1253 WR-S-XP XXX
 ① Series No.
 ② Connector type: WR=Right angle
 ③ Mounting type: S=SMT
 ④ No. of circuits
 ⑤ Option code:
 Blank=Contacts/Matte Tin-plated and
 Solder tabs/Matte Tin-plated Without Mylar
 D01=Contacts/Gold-flash and
 Solder tabs/Gold-flash
 S01=Contacts/Matte Tin-plated and
 Solder tabs/Matte Tin-plated With Mylar



P.C.B. LAYOUT



KAPTON TAPE
 (FOR PICK AND
 PLACE SYSTEMS)



X-ON Electronics

Largest Supplier of Electrical and Electronic Components

Click to view similar products for [Headers & Wire Housings](#) category:

Click to view products by [Joint Tech](#) manufacturer:

Other Similar products are found below :

[95000-104TRLF](#) [10135584-644402LF](#) [DF62W-EP2022PCA](#) [95000-106TRLF](#) [DF62W-2022SCA](#) [DF62W-EP2022PC](#) [2203348](#) [DF62W-2022SC](#) [1084018](#) [1029039](#) [1084017](#) [802-10-012-10-002000](#) [1112640](#) [1112639](#) [891-007-9SS-BST1T](#) [000-34000](#) [0008550134](#) [0009482033](#) [0009507031](#) [57102-F02-18ULF](#) [57102-S06-03LF](#) [57202-S52-04LF](#) [PCN6-15S-2.5E](#) [0039019024](#) [58102-G61-06LF](#) [582553-1](#) [0009485154](#) [0009508121](#) [0022285053](#) [0050291907](#) [018731A](#) [LY20-4P-DT1-P1E-BR](#) [02.125.8002.8](#) [60101931](#) [60598-1 \(Cut Strip\)](#) [M1625-3R/100](#) [61062-3](#) [61082-181009](#) [CSU011177004](#) [636-1427](#) [638009-1](#) [641938-9](#) [641991-4](#) [644168-1](#) [644827-2](#) [647662-1](#) [65039-019ELF](#) [65692-001LF](#) [65781-018](#) [65781-047](#)