

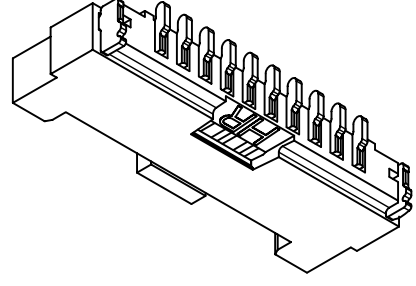
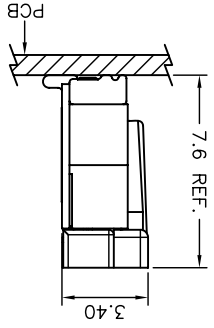
REV.	DESCRIPTION	DATE	NAME	X.XX±0.05	
B0	EN1001190040	2011.06.08	陳敏	X.XX±0.15	
B1	EN109190398	2011.09.19	陳敏	X.X±0.25	
B2	EN1205170160	2012.05.21	陳敏	GENERAL TOLERANCE	
B3	EN1403050002	2014.02.17	周傑亮	2007.12.26	
			歐陽小強 謝瑞濤	2007.12.26	APPROVED BY
				1 of 2	SHEET
				mm	SCALE
				1 : 1	UNIT

燦達電子工業股份有限公司
 JOINT TECH ELECTRONIC IND. CO., LTD.
 TITLE: 1.25mm PITCH
 180° WAFER-SMT TYPE,
 WITHOUT BOSS

DRAW NO.: A1253WVA-S-XP
 REV. B3

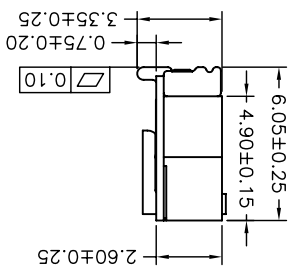
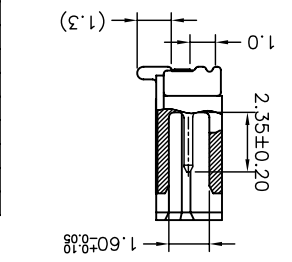
Circuit		Dimensions	
No.		A	B
02P		1.25	7.45
03P		2.50	8.70
04P		3.75	9.95
05P		5.00	11.20
06P		6.25	12.45
07P		7.50	13.70
08P		8.75	14.95
09P		10.00	16.20
10P		11.25	17.45
11P		12.50	18.70
12P		13.75	19.95
13P		15.00	21.20
14P		16.25	22.45
15P		17.50	23.70
20P		23.75	29.95
25P		30.00	36.20
30P		36.25	42.45

MATED CONDITION

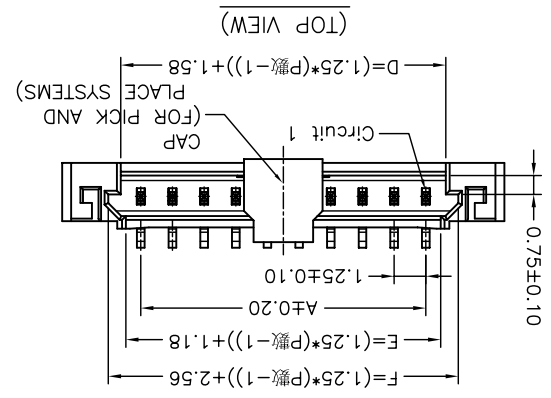
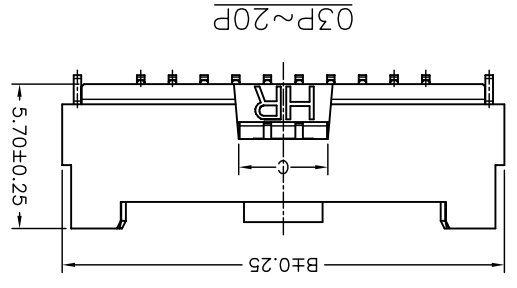
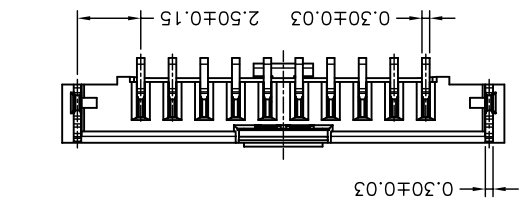
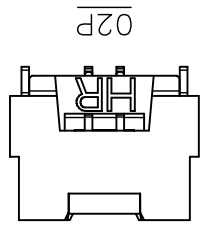
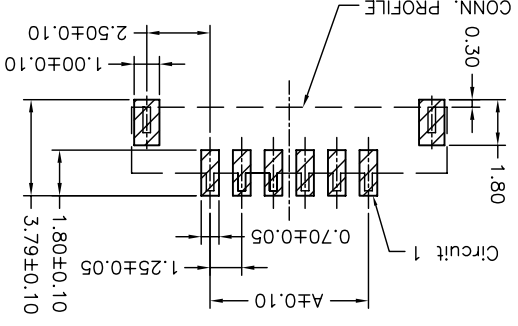


SPECIFICATIONS
 ① Series No.
 ② Connector type: W=Vertical A type
 ③ Mounting type: S=SMT
 ④ No. of circuits
 ⑤ Option code:
 Blank= Pin Material: Brass/Matte Tin-plated
 Solder Tabs: Brass/Matte Tin-plated
 D01 = Pin Material: Brass/Gold-flash
 Solder Tabs: Brass/Gold-flash
 Pin Material: Brass/Matte Tin-plated
 Solder Tabs: Brass/Matte Tin-plated
 Withstanding Voltage: 500V AC/minute
 Current Rating: 1A AC,DC
 Voltage Rating: 150V AC,DC
 Temperature Range: -25°C ~ +85°C
 Contact Resistance: 20mΩ Max.
 Insulation Resistance: 500MΩ Min.
 Material: Nylon 6T,UL94V-0
 Cap: Nylon 6T,UL94V-0 Black

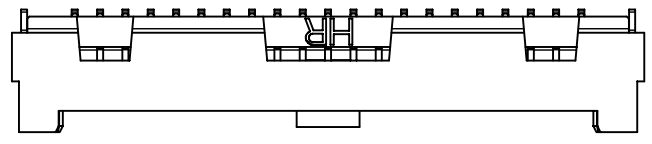
P/N LEGEND
 A1253 WVA-S-XP XXX
 ①
 ②
 ③
 ④
 ⑤



P.C.B. LAYOUT (TOP VIEW)



SCALE 0.8:1
 21P~30P



X-ON Electronics

Largest Supplier of Electrical and Electronic Components

Click to view similar products for [Headers & Wire Housings](#) category:

Click to view products by [Joint Tech](#) manufacturer:

Other Similar products are found below :

[95000-104TRLF](#) [10135584-644402LF](#) [DF62W-EP2022PCA](#) [95000-106TRLF](#) [DF62W-2022SCA](#) [DF62W-EP2022PC](#) [2203348](#) [DF62W-2022SC](#) [1084018](#) [1029039](#) [1084017](#) [802-10-012-10-002000](#) [1112640](#) [1112639](#) [891-007-9SS-BST1T](#) [000-34000](#) [0008550134](#) [0009482033](#) [0009507031](#) [57102-F02-18ULF](#) [57102-S06-03LF](#) [57202-S52-04LF](#) [PCN6-15S-2.5E](#) [0039019024](#) [58102-G61-06LF](#) [582553-1](#) [0009485154](#) [0009508121](#) [0022285053](#) [0050291907](#) [018731A](#) [LY20-4P-DT1-P1E-BR](#) [02.125.8002.8](#) [60101931](#) [60598-1 \(Cut Strip\)](#) [M1625-3R/100](#) [61062-3](#) [61082-181009](#) [CSU011177004](#) [636-1427](#) [638009-1](#) [641938-9](#) [641991-4](#) [644168-1](#) [644827-2](#) [647662-1](#) [65039-019ELF](#) [65692-001LF](#) [65781-018](#) [65781-047](#)