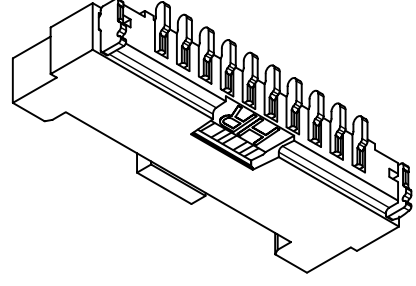
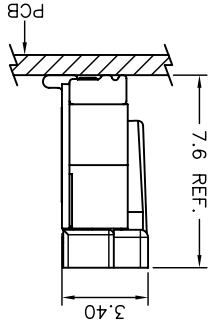


REV.	DESCRIPTION	DATE	NAME	X.XX±0.05		DRAWN BY 謝瑞清 2007.12.26	GENERAL TOLERANCE 2007.12.26	DRAWN BY 謝瑞清 2007.12.26	APPROVED BY 謝瑞清 2007.12.26	UNIT mm	SCALE 1:1	SHEET 1 of 2	TITLE: 1.25mm PITCH 180° WAFER-SMT TYPE, WITHOUT BOSS	DRAWN NO.: A1253WVA-S-XP	REV. B3
B3	EN1403050002	2014.02.17	周傑亮	X.XX±0.15											
B2	EN1205170160	2012.05.21	陳敏	X.XX±0.25											
B1	EN109190398	2011.09.19	陳敏												
B0	EN1001190040	2011.06.08	陳敏												

JOINT TECH ELECTRONIC IND. CO., LTD.
 燦達電子工業股份有限公司

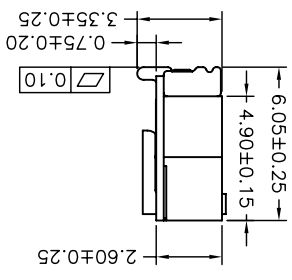
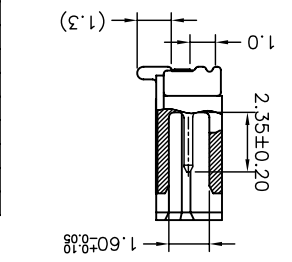
Circuit		Dimensions	
No.		A	B
02P		1.25	7.45
03P		2.50	8.70
04P		3.75	9.95
05P		5.00	11.20
06P		6.25	12.45
07P		7.50	13.70
08P		8.75	14.95
09P		10.00	16.20
10P		11.25	17.45
11P		12.50	18.70
12P		13.75	19.95
13P		15.00	21.20
14P		16.25	22.45
15P		17.50	23.70
20P		23.75	29.95
25P		30.00	36.20
30P		36.25	42.45

MATED CONDITION

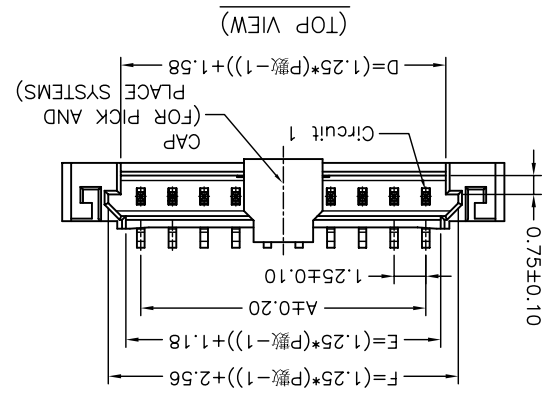
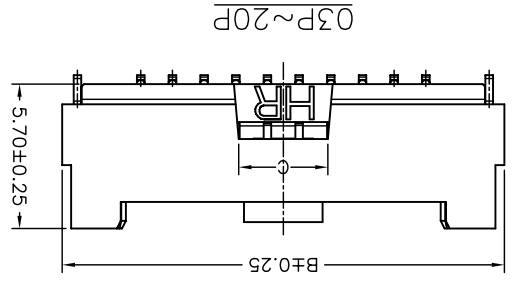
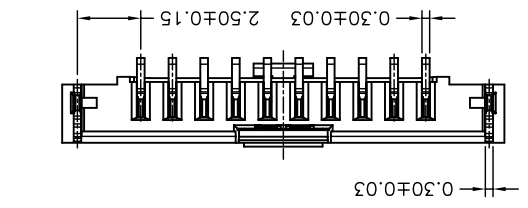
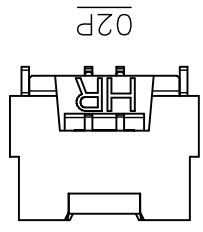
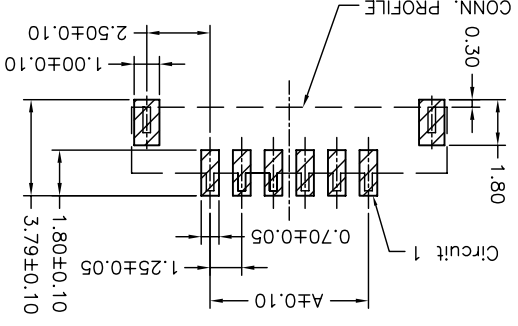


SPECIFICATIONS
 ① Series No.
 ② Connector type: W=Vertical A type
 ③ Mounting type: S=SMT
 ④ No. of circuits
 ⑤ Option code:
 Blank= Pin Material: Brass/Matte Tin-plated
 Solder Tabs: Brass/Matte Tin-plated
 D01 = Pin Material: Brass/Gold-flash
 Solder Tabs: Brass/Gold-flash
 Pin Material: Brass/Matte Tin-plated
 Solder Tabs: Brass/Matte Tin-plated
 Withstanding Voltage: 500V AC/minute
 Current Rating: 1A AC,DC
 Voltage Rating: 150V AC,DC
 Temperature Range: -25°C ~ +85°C
 Contact Resistance: 20mΩ Max.
 Insulation Resistance: 500MΩ Min.
 Material: Nylon 6T,UL94V-0
 Cap: Nylon 6T,UL94V-0 Black

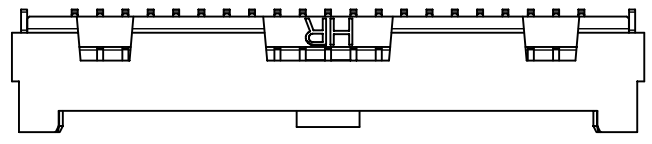
P/N LEGEND
 A1253 WVA-S-XP XXX
 ①
 ②
 ③
 ④
 ⑤



P.C.B. LAYOUT (TOP VIEW)



SCALE 0.8:1
 21P~30P



X-ON Electronics

Largest Supplier of Electrical and Electronic Components

Click to view similar products for [Headers & Wire Housings](#) category:

Click to view products by [Joint Tech](#) manufacturer:

Other Similar products are found below :

[95000-104TRLF](#) [10135584-644402LF](#) [DF62W-EP2022PCA](#) [95000-106TRLF](#) [DF62W-2022SCA](#) [DF62W-EP2022PC](#) [2203348](#) [DF62W-2022SC](#) [1084018](#) [1029039](#) [1084017](#) [802-10-012-10-002000](#) [1112640](#) [1112639](#) [891-007-9SS-BST1T](#) [000-34000](#) [0008550134](#) [0009482033](#) [0009507031](#) [57102-F02-18ULF](#) [57102-S06-03LF](#) [57202-S52-04LF](#) [PCN6-15S-2.5E](#) [0039019024](#) [58102-G61-06LF](#) [582553-1](#) [0009485154](#) [0009508121](#) [0022285053](#) [0050291907](#) [018731A](#) [LY20-4P-DT1-P1E-BR](#) [02.125.8002.8](#) [60101931](#) [60598-1 \(Cut Strip\)](#) [M1625-3R/100](#) [61062-3](#) [61082-181009](#) [CSU011177004](#) [636-1427](#) [638009-1](#) [641938-9](#) [641991-4](#) [644168-1](#) [644827-2](#) [647662-1](#) [65039-019ELF](#) [65692-001LF](#) [65781-018](#) [65781-047](#)