

REV.	DESCRIPTION	DATE	NAME	X.XX±0.05	
B0	EN1001190040	2011.06.08	陳敏	X.XX±0.15	
B1	EN109190398	2011.09.19	陳敏	X.X±0.25	
B2	EN1205170160	2012.05.21	陳敏	GENERAL TOLERANCE	
B3	EN1403050002	2014.02.17	周傑亮	2007.12.26	
			周傑亮	2007.12.26	2007.12.26
			謝瑞濤		
			歐陽小強		
			APPROVED BY		
			DRAWN BY		
			1 : 1		
			1 of 2		
			SHEET		
			SCALE		
			UNIT	mm	
			TITLE:		

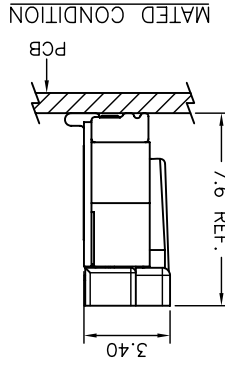
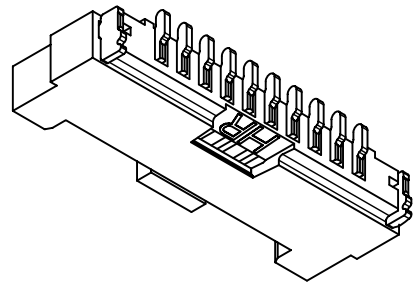
燦達電子工業股份有限公司
 JOINT TECH ELECTRONIC IND. CO., LTD.

1.25mm PITCH
 180° WAFER-SMT TYPE,
 WITHOUT BOSS

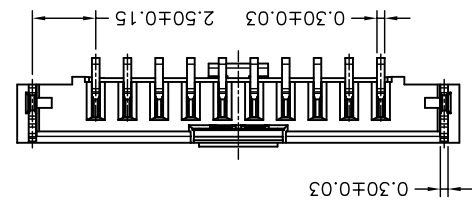
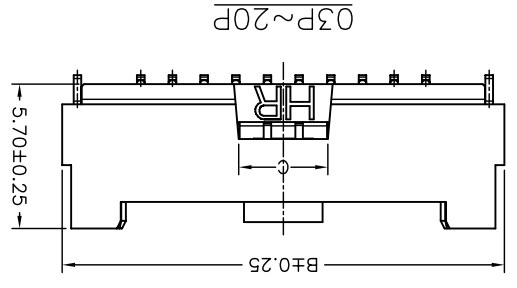
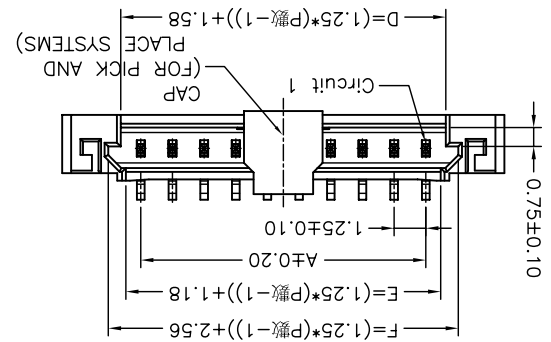
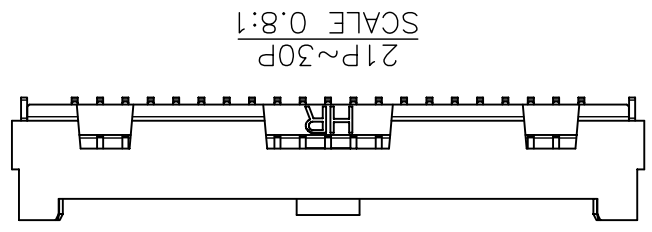
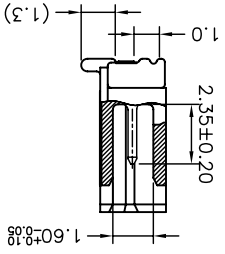
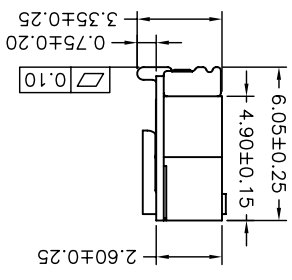
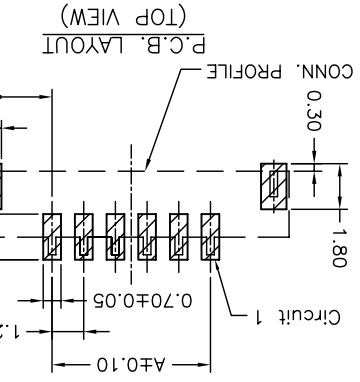
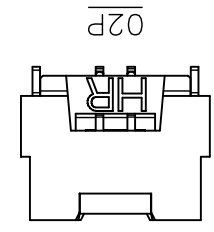
REV. B3

Circuit		Dimensions	
No.	A	B	C
02P	1.25	7.45	3.50
03P	2.50	8.70	3.50
04P	3.75	9.95	3.50
05P	5.00	11.20	3.50
06P	6.25	12.45	3.50
07P	7.50	13.70	3.50
08P	8.75	14.95	3.50
09P	10.00	16.20	3.50
10P	11.25	17.45	3.50
11P	12.50	18.70	5.00
12P	13.75	19.95	5.00
13P	15.00	21.20	5.00
14P	16.25	22.45	5.00
15P	17.50	23.70	5.00
20P	23.75	29.95	5.00
25P	30.00	36.20	6.00
30P	36.25	42.45	6.00

SPECIFICATIONS
 ① Series No.
 ② Connector type: W=Vertical A type
 ③ Mounting type: S=SMT
 ④ No. of circuits
 ⑤ Option code:
 Blank= Pin Material: Brass/Matte Tin-plated
 Solder Tabs: Brass/Matte Tin-plated
 D01 = Pin Material: Brass/Gold-flash
 Solder Tabs: Brass/Gold-flash
 Pin Material: Brass/Matte Tin-plated
 Solder Tabs: Brass/Matte Tin-plated
 Withstanding Voltage: 500V AC/minute
 Current Rating: 1A AC,DC
 Voltage Rating: 150V AC,DC
 Temperature Range: -25°C ~ +85°C
 Contact Resistance: 20mΩ Max.
 Insulation Resistance: 500MΩ Min.
 Material: Nylon 6T,UL94V-0
 Cap: Nylon 6T,UL94V-0 Black



P/N LEGEND
 A1253 WVA-S-XP XXX
 ① Series No.
 ② Connector type: W=Vertical A type
 ③ Mounting type: S=SMT
 ④ No. of circuits
 ⑤ Option code:
 Blank= Pin Material: Brass/Matte Tin-plated
 Solder Tabs: Brass/Matte Tin-plated
 D01 = Pin Material: Brass/Gold-flash
 Solder Tabs: Brass/Gold-flash
 Pin Material: Brass/Matte Tin-plated
 Solder Tabs: Brass/Matte Tin-plated



SCALE 0.8:1

03P~20P

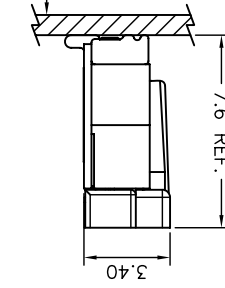
(TOP VIEW)

P.C.B. LAYOUT (TOP VIEW)

(TOP VIEW)

MATED CONDITION

PCB



P/N LEGEND

A1253 WVA-S-XP XXX

① Series No.

② Connector type: W=Vertical A type

③ Mounting type: S=SMT

④ No. of circuits

⑤ Option code:

Blank= Pin Material: Brass/Matte Tin-plated

Solder Tabs: Brass/Matte Tin-plated

D01 = Pin Material: Brass/Gold-flash

Solder Tabs: Brass/Gold-flash

Pin Material: Brass/Matte Tin-plated

Solder Tabs: Brass/Matte Tin-plated

Withstanding Voltage: 500V AC/minute

Current Rating: 1A AC,DC

Voltage Rating: 150V AC,DC

Temperature Range: -25°C ~ +85°C

Contact Resistance: 20mΩ Max.

Insulation Resistance: 500MΩ Min.

Material: Nylon 6T,UL94V-0

Cap: Nylon 6T,UL94V-0 Black

Solder Tabs: Brass/Matte Tin-plated

Solder Tabs: Brass/Matte Tin-plated

D01 = Pin Material: Brass/Gold-flash

Solder Tabs: Brass/Gold-flash

Pin Material: Brass/Matte Tin-plated

Solder Tabs: Brass/Matte Tin-plated

Withstanding Voltage: 500V AC/minute

Current Rating: 1A AC,DC

Voltage Rating: 150V AC,DC

Temperature Range: -25°C ~ +85°C

Contact Resistance: 20mΩ Max.

Insulation Resistance: 500MΩ Min.

Material: Nylon 6T,UL94V-0

Cap: Nylon 6T,UL94V-0 Black

Solder Tabs: Brass/Matte Tin-plated

Solder Tabs: Brass/Matte Tin-plated

D01 = Pin Material: Brass/Gold-flash

Solder Tabs: Brass/Gold-flash

Pin Material: Brass/Matte Tin-plated

Solder Tabs: Brass/Matte Tin-plated

Withstanding Voltage: 500V AC/minute

Current Rating: 1A AC,DC

Voltage Rating: 150V AC,DC

Temperature Range: -25°C ~ +85°C

Contact Resistance: 20mΩ Max.

Insulation Resistance: 500MΩ Min.

Material: Nylon 6T,UL94V-0

Cap: Nylon 6T,UL94V-0 Black

X-ON Electronics

Largest Supplier of Electrical and Electronic Components

Click to view similar products for [Headers & Wire Housings](#) category:

Click to view products by [Joint Tech](#) manufacturer:

Other Similar products are found below :

[95000-104TRLF](#) [10135584-644402LF](#) [DF62W-EP2022PCA](#) [95000-106TRLF](#) [DF62W-2022SCA](#) [DF62W-EP2022PC](#) [2203348](#) [DF62W-2022SC](#) [1084018](#) [1029039](#) [1084017](#) [802-10-012-10-002000](#) [1112640](#) [1112639](#) [891-007-9SS-BST1T](#) [000-34000](#) [0008550134](#) [0009482033](#) [0009507031](#) [57102-F02-18ULF](#) [57102-S06-03LF](#) [57202-S52-04LF](#) [PCN6-15S-2.5E](#) [0039019024](#) [58102-G61-06LF](#) [582553-1](#) [0009485154](#) [0009508121](#) [0022285053](#) [0050291907](#) [018731A](#) [LY20-4P-DT1-P1E-BR](#) [02.125.8002.8](#) [60101931](#) [60598-1 \(Cut Strip\)](#) [M1625-3R/100](#) [61062-3](#) [61082-181009](#) [CSU011177004](#) [636-1427](#) [638009-1](#) [641938-9](#) [641991-4](#) [644168-1](#) [644827-2](#) [647662-1](#) [65039-019ELF](#) [65692-001LF](#) [65781-018](#) [65781-047](#)