

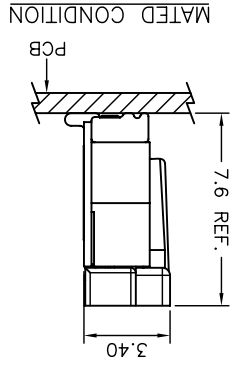
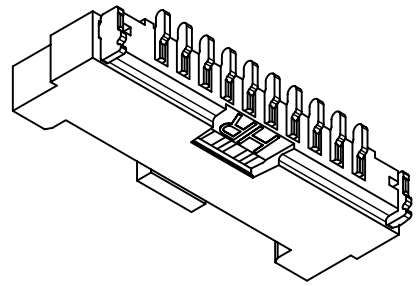
REV.	DESCRIPTION	DATE	NAME	X.XX±0.05	 ANGLE
B0	EN1001190040	2011.06.08	陳敏	X.XX±0.15	
B1	EN109190398	2011.09.19	陳敏	X.X±0.25	
B2	EN1205170160	2012.05.21	陳敏	GENERAL TOLERANCE	
B3	EN1403050002	2014.02.17	周傑亮	2007.12.26	
			周傑亮	2007.12.26	2007.12.26
			謝瑞濤		
			歐陽小強		
			APPROVED BY		
			DRAWN BY		
			1 : 1	1 of 2	
			mm		
			UNIT	SCALE	SHEET

JOINT TECH ELECTRONIC IND. CO., LTD.  
 燦達電子工業股份有限公司  
 TITLE: 1.25mm PITCH  
 180° WAFER-SMT TYPE,  
 WITHOUT BOSS

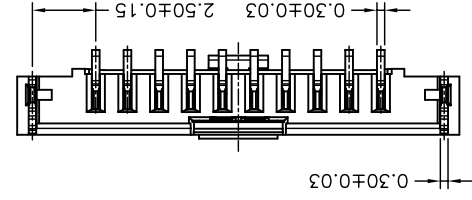
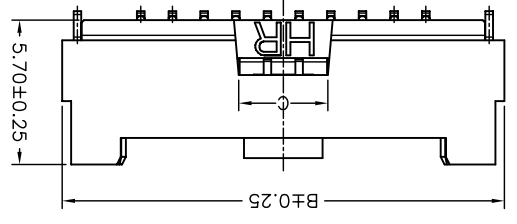
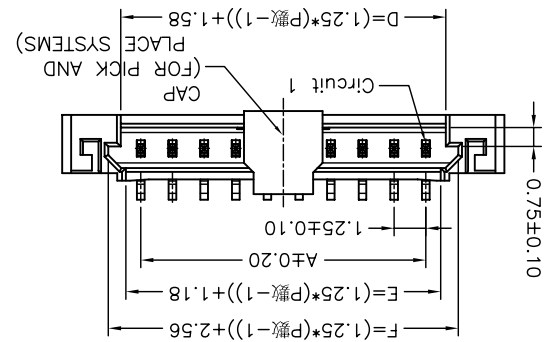
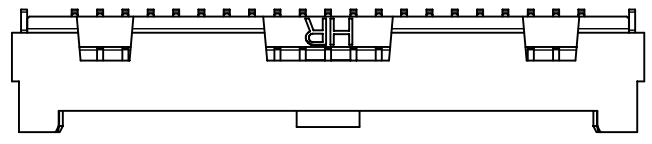
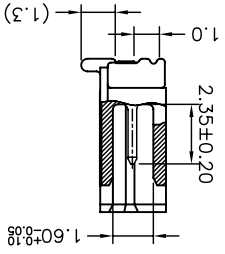
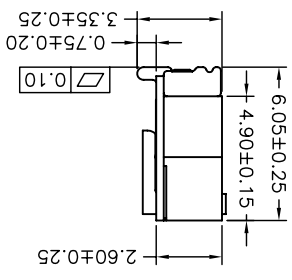
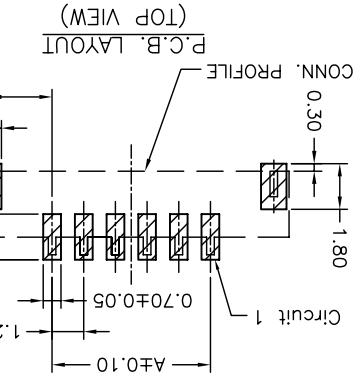
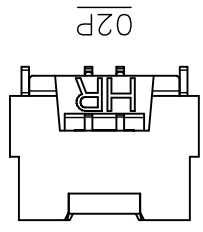
REV. B3

Circuit		Dimensions	
No.	A	B	C
02P	1.25	7.45	3.50
03P	2.50	8.70	3.50
04P	3.75	9.95	3.50
05P	5.00	11.20	3.50
06P	6.25	12.45	3.50
07P	7.50	13.70	3.50
08P	8.75	14.95	3.50
09P	10.00	16.20	3.50
10P	11.25	17.45	3.50
11P	12.50	18.70	5.00
12P	13.75	19.95	5.00
13P	15.00	21.20	5.00
14P	16.25	22.45	5.00
15P	17.50	23.70	5.00
20P	23.75	29.95	5.00
25P	30.00	36.20	6.00
30P	36.25	42.45	6.00

**SPECIFICATIONS**  
 ① Series No.  
 ② Connector type: W=Vertical A type  
 ③ Mounting type: S=SMT  
 ④ No. of circuits  
 ⑤ Option code:  
 Blank= Pin Material: Brass/Matte Tin-plated  
 Solder Tabs: Brass/Matte Tin-plated  
 D01 = Pin Material: Brass/Gold-flash  
 Solder Tabs: Brass/Gold-flash  
 Pin Material: Brass/Matte Tin-plated  
 Solder Tabs: Brass/Matte Tin-plated  
 Withstanding Voltage: 500V AC/minute  
 Current Rating: 1A AC,DC  
 Voltage Rating: 150V AC,DC  
 Temperature Range: -25°C ~ +85°C  
 Contact Resistance: 20mΩ Max.  
 Insulation Resistance: 500MΩ Min.  
 Material: Nylon 6T,UL94V-0  
 Cap: Nylon 6T,UL94V-0 Black



**P/N LEGEND**  
 A1253 WVA-S-XP XXX  
 ① Series No.  
 ② Connector type: W=Vertical A type  
 ③ Mounting type: S=SMT  
 ④ No. of circuits  
 ⑤ Option code:  
 Blank= Pin Material: Brass/Matte Tin-plated  
 Solder Tabs: Brass/Matte Tin-plated  
 D01 = Pin Material: Brass/Gold-flash  
 Solder Tabs: Brass/Gold-flash



SCALE 0.8:1

03P~20P

4

3

2

1

4

3

2

1

D

D

C

C

B

B

A

A

## X-ON Electronics

Largest Supplier of Electrical and Electronic Components

*Click to view similar products for [Headers & Wire Housings](#) category:*

*Click to view products by [Joint Tech](#) manufacturer:*

Other Similar products are found below :

[95000-104TRLF](#) [10135584-644402LF](#) [DF62W-EP2022PCA](#) [95000-106TRLF](#) [DF62W-2022SCA](#) [DF62W-EP2022PC](#) [2203348](#) [DF62W-2022SC](#) [1084018](#) [1029039](#) [1084017](#) [802-10-012-10-002000](#) [1112640](#) [1112639](#) [891-007-9SS-BST1T](#) [000-34000](#) [0008550134](#) [0009482033](#) [0009507031](#) [57102-F02-18ULF](#) [57102-S06-03LF](#) [57202-S52-04LF](#) [PCN6-15S-2.5E](#) [0039019024](#) [58102-G61-06LF](#) [582553-1](#) [0009485154](#) [0009508121](#) [0022285053](#) [0050291907](#) [018731A](#) [LY20-4P-DT1-P1E-BR](#) [02.125.8002.8](#) [60101931](#) [60598-1 \(Cut Strip\)](#) [M1625-3R/100](#) [61062-3](#) [61082-181009](#) [CSU011177004](#) [636-1427](#) [638009-1](#) [641938-9](#) [641991-4](#) [644168-1](#) [644827-2](#) [647662-1](#) [65039-019ELF](#) [65692-001LF](#) [65781-018](#) [65781-047](#)