

Circuit		Dimensions				
No.	A	B	C	D		
02P	1.25	6.10	4.01	---	---	
03P	2.50	7.35	5.26	---	---	
04P	3.75	8.60	6.51	---	---	
05P	5.00	9.85	7.76	---	---	
06P	6.25	11.10	9.01	---	---	
07P	7.50	12.35	10.26	7.50	8.75	
08P	8.75	13.60	11.51	8.75	10.00	
10P	11.25	16.10	14.01	10.00	11.25	
11P	12.50	17.35	15.26	11.25	12.50	
12P	13.75	18.60	16.51	12.50	13.75	
13P	15.00	19.85	17.76	13.75	15.00	
14P	16.25	21.10	19.01	15.00	16.25	
15P	17.50	22.35	20.26	16.25	17.50	
20P	23.75	28.60	26.51	22.50	23.75	
25P	30.00	34.85	32.76	28.75	30.00	
30P	36.25	41.10	39.01	35.00	36.25	

P/N LEGEND

① Series No. A1255 WR-S-XP XXX

② Connector type: WR=Right angle

③ Mounting type: S=SMT without boss

④ No. of circuits

⑤ Option code: D02=Nylon6T,UL94V-0, Color: Natural(Beige) D12=Nylon6T,UL94V-0, Color: Natural(Black)

SPECIFICATIONS

Current Rating: 1A AC,DC

Voltage Rating: 200V AC,DC

Temperature Range: -25°C ~ +85°C

Contact Resistance: 40mΩ Max.

Insulation Resistance: 100MΩ Min.

Withstanding Voltage: 500V AC/minute

Pin Material: Phosphor Bronze/
Gold-plated 3u"

Solder Tabs: Phosphor Bronze/
Gold-flash

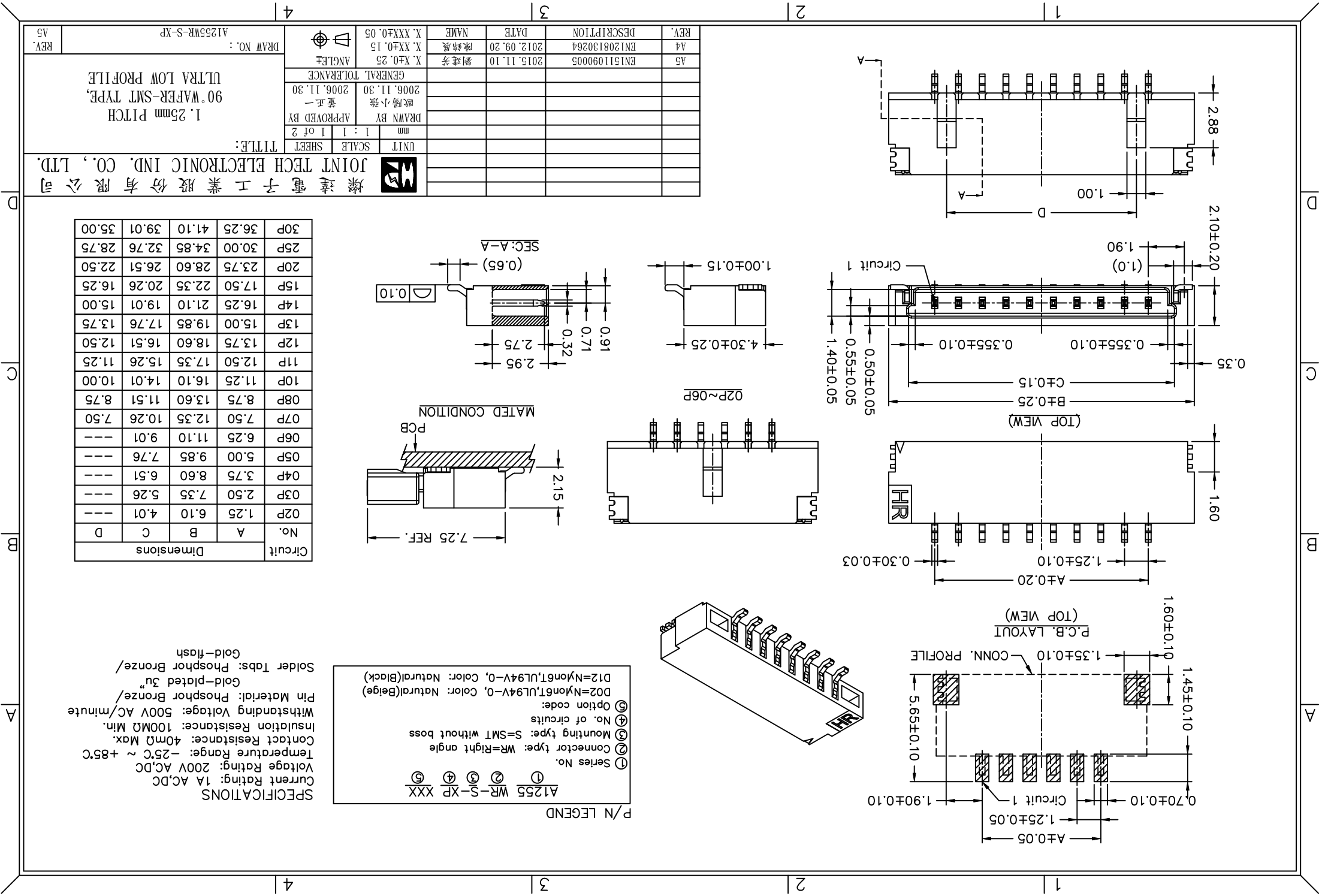
REV.	A5	ENI511090003	2015.11.10	劉建芳	X.XX±0.25	ANGLE
REV.	A4	ENI208130264	2012.09.20	陳錦展	X.XX±0.15	ANGLE
REV.	A5				X.XX±0.05	ANGLE

DRAWN BY: 歐陽小強 2006.11.30
APPROVED BY: 黃正一 2006.11.30
GENERAL TOLERANCE: 2006.11.30

UNIT: mm
SCALE: 1:1
SHEET: 1 of 2

TITLE: 1.25mm PITCH
90° WAFER-SMT TYPE,
ULTRA LOW PROFILE

JOINT TECH ELECTRONIC IND. CO., LTD.



X-ON Electronics

Largest Supplier of Electrical and Electronic Components

Click to view similar products for [Headers & Wire Housings](#) category:

Click to view products by [Joint Tech](#) manufacturer:

Other Similar products are found below :

[95000-104TRLF](#) [10135584-644402LF](#) [DF62W-EP2022PCA](#) [95000-106TRLF](#) [DF62W-2022SCA](#) [DF62W-EP2022PC](#) [2203348](#) [DF62W-2022SC](#) [1084018](#) [1029039](#) [1084017](#) [802-10-012-10-002000](#) [1112640](#) [1112639](#) [891-007-9SS-BST1T](#) [000-34000](#) [0008550134](#) [0009482033](#) [0009507031](#) [57102-F02-18ULF](#) [57102-S06-03LF](#) [57202-S52-04LF](#) [PCN6-15S-2.5E](#) [0039019024](#) [58102-G61-06LF](#) [582553-1](#) [0009485154](#) [0009508121](#) [0022285053](#) [0050291907](#) [018731A](#) [LY20-4P-DT1-P1E-BR](#) [02.125.8002.8](#) [60101931](#) [60598-1 \(Cut Strip\)](#) [M1625-3R/100](#) [61062-3](#) [61082-181009](#) [CSU011177004](#) [636-1427](#) [638009-1](#) [641938-9](#) [641991-4](#) [644168-1](#) [644827-2](#) [647662-1](#) [65039-019ELF](#) [65692-001LF](#) [65781-018](#) [65781-047](#)