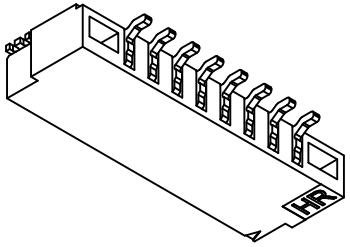
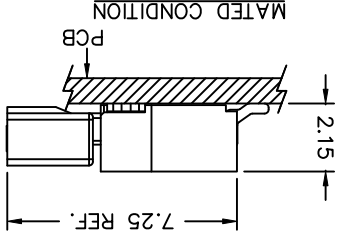
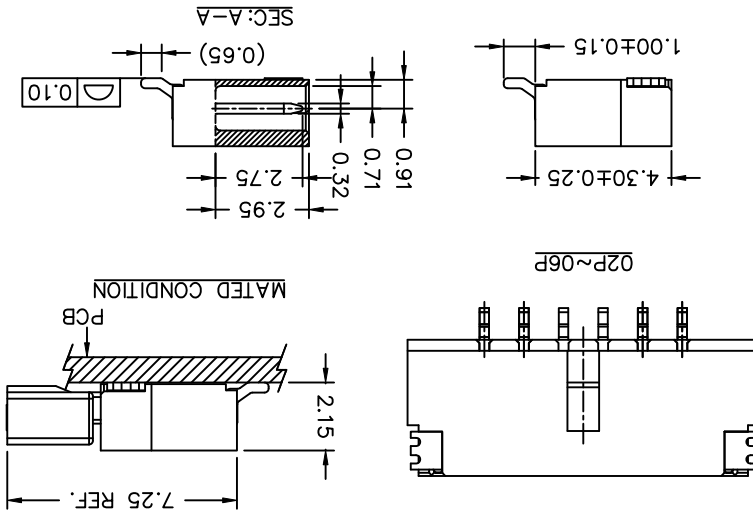
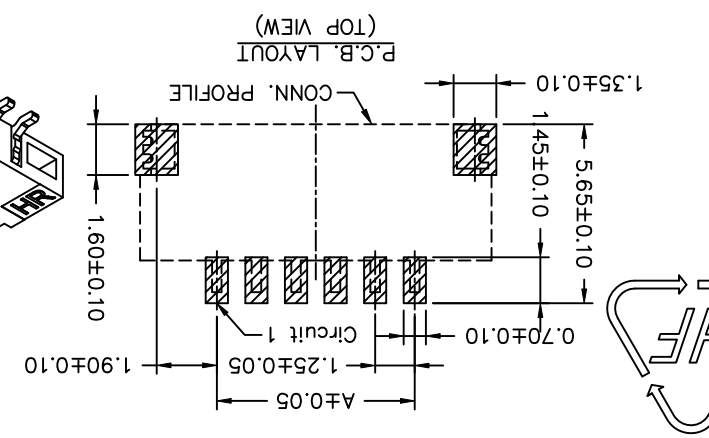
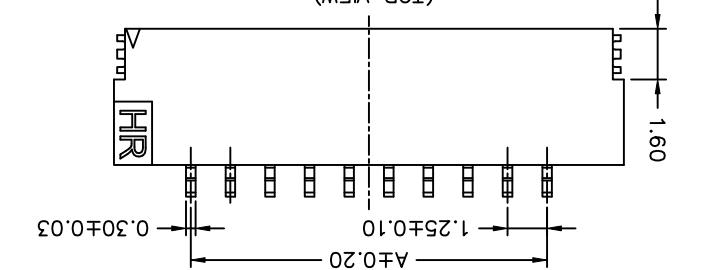
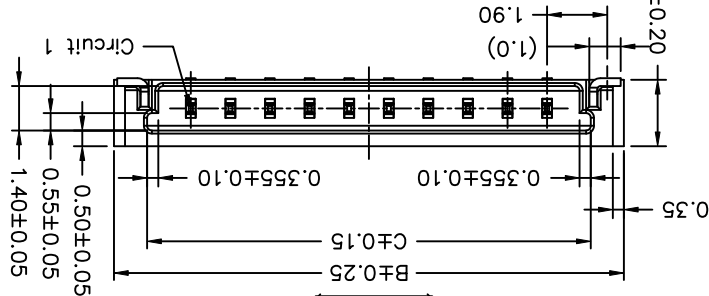
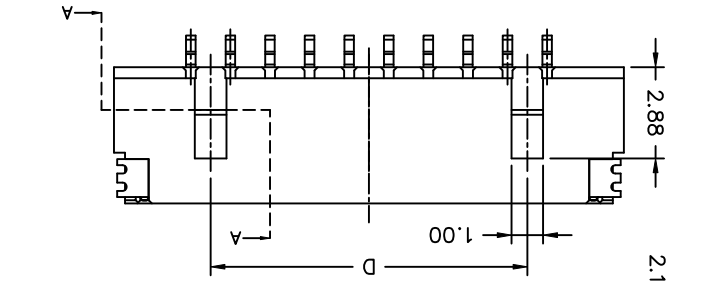


REV.	DESCRIPTION	DATE	NAME	X.XXX±0.05	
A0	NEW RELEASE	2012.09.20	陳錦展	X.XX±0.15	
A1	EN1307020224	2013.06.19	周傑亮	X.X±0.25	
A2	EN1511090005	2015.11.10	劉建芳	GENERAL TOLERANCE	
				2012.09.20	陳錦展 修正一 APPROVED BY 2012.09.20
				DRAWN BY	
				UNIT	SCALE
				SHEET	SHEET
				1 : 1	1 of 2

JOINT TECH ELECTRONIC IND. CO., LTD.
 燦達電子工業股份有限公司

TITLE:
 1.25mm PITCH
 90° WAFER-SMT TYPE,
 ULTRA LOW PROFILE

REV.	A2
DRAWN NO.:	A125WR-S-XPXXXXXXXXXX



Circuit		Dimensions				
No.	A	B	C	D		
02P	1.25	6.10	4.01	---	---	
03P	2.50	7.35	5.26	---	---	
04P	3.75	8.60	6.51	---	---	
05P	5.00	9.85	7.76	---	---	
06P	6.25	11.10	9.01	---	---	
07P	7.50	12.35	10.26	7.50	8.75	
08P	8.75	13.60	11.51	8.75	10.00	
10P	11.25	16.10	14.01	10.00	11.25	
11P	12.50	17.35	15.26	11.25	12.50	
12P	13.75	18.60	16.51	12.50	13.75	
13P	15.00	19.85	17.76	13.75	15.00	
14P	16.25	21.10	19.01	15.00	16.25	
15P	17.50	22.35	20.26	16.25	17.50	
20P	23.75	28.60	26.51	22.50	23.75	
25P	30.00	34.85	32.76	28.75	30.00	
30P	36.25	41.10	39.01	35.00	36.25	

P/N LEGEND

① Series No.
 ② Connector type: WR=Right angle
 ③ Mounting type: S=SMT
 ④ No. of circuits
 ⑤ N=Halogen Free
 ⑥ Material: L=LCP-V0
 ⑦ Color: N=Natural(Belge)
 ⑧ Plating code for contacts:
 G2=Gold-plated 3u", T1=Matte Tin-plated
 ⑨ Plating code for solder tabs:
 G=Gold-flash, T=Matte Tin-plated
 ⑩ Option code: 00=Standard
 ⑪ Packing code: R=Tape & Reel

A125 WR-S-XP N L N XX X 00 R
 ① ② ③ ④ ⑤ ⑥ ⑦ ⑧ ⑨ ⑩ ⑪

SPECIFICATIONS
 Current Rating: 1A AC,DC
 Voltage Rating: 200V AC,DC
 Temperature Range: -25°C ~ +85°C
 Contact Resistance: 40mΩ Max.
 Insulation Resistance: 100MΩ Min.
 Withstanding Voltage: 500V AC/minute
 Pin Material: Phosphor Bronze
 Solder Tabs: Phosphor Bronze

X-ON Electronics

Largest Supplier of Electrical and Electronic Components

Click to view similar products for [Headers & Wire Housings](#) category:

Click to view products by [Joint Tech](#) manufacturer:

Other Similar products are found below :

[95000-104TRLF](#) [10135584-644402LF](#) [DF62W-EP2022PCA](#) [95000-106TRLF](#) [DF62W-2022SCA](#) [DF62W-EP2022PC](#) [2203348](#) [DF62W-2022SC](#) [1084018](#) [1029039](#) [1084017](#) [802-10-012-10-002000](#) [1112640](#) [1112639](#) [891-007-9SS-BST1T](#) [000-34000](#) [0008550134](#) [0009482033](#) [0009507031](#) [57102-F02-18ULF](#) [57102-S06-03LF](#) [57202-S52-04LF](#) [PCN6-15S-2.5E](#) [0039019024](#) [58102-G61-06LF](#) [582553-1](#) [0009485154](#) [0009508121](#) [0022285053](#) [0050291907](#) [018731A](#) [LY20-4P-DT1-P1E-BR](#) [02.125.8002.8](#) [60101931](#) [60598-1 \(Cut Strip\)](#) [M1625-3R/100](#) [61062-3](#) [61082-181009](#) [CSU011177004](#) [636-1427](#) [638009-1](#) [641938-9](#) [641991-4](#) [644168-1](#) [644827-2](#) [647662-1](#) [65039-019ELF](#) [65692-001LF](#) [65781-018](#) [65781-047](#)