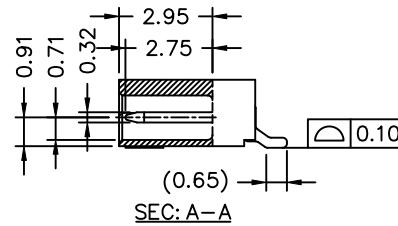
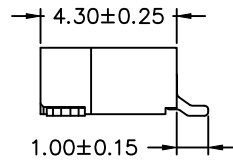
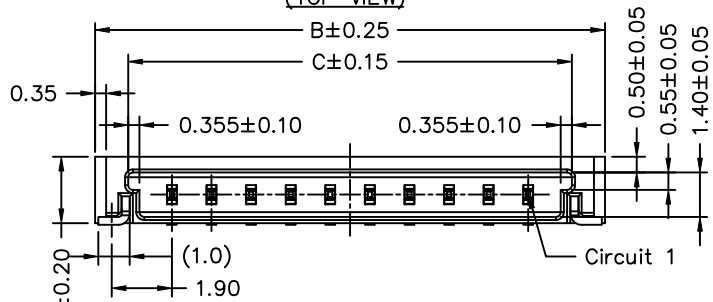
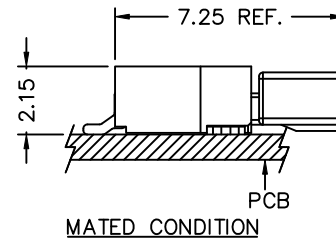
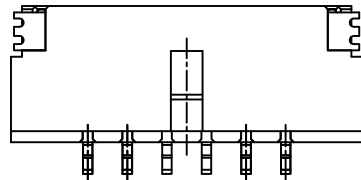
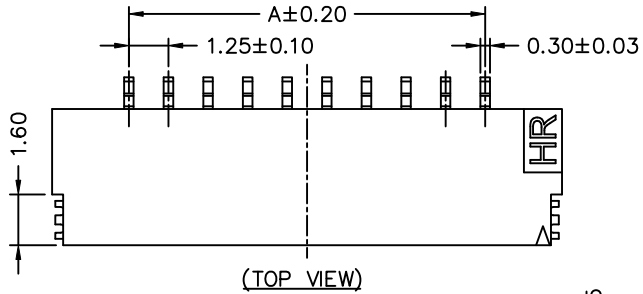


P/N LEGEND

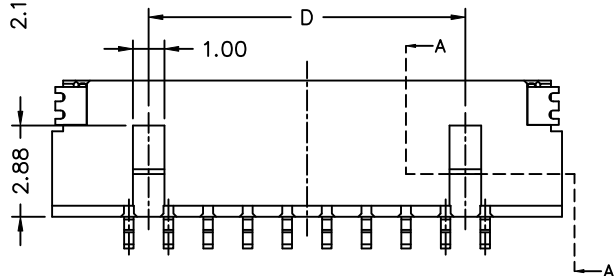
A1255 WR-S-XP XXX				
①	②	③	④	⑤
① Series No.				
② Connector type: WR=Right angle				
③ Mounting type: S=SMT without boss				
④ No. of circuits				
⑤ Option code:				
D02=Nylon6T,UL94V-0, Color: Natural(Beige)				
D12=Nylon6T,UL94V-0, Color: Natural(Black)				

SPECIFICATIONS

Current Rating: 1A AC,DC  
 Voltage Rating: 200V AC,DC  
 Temperature Range: -25°C ~ +85°C  
 Contact Resistance: 40mΩ Max.  
 Insulation Resistance: 100MΩ Min.  
 Withstanding Voltage: 500V AC/minute  
 Pin Material: Phosphor Bronze/  
 Gold-plated 3u"  
 Solder Tabs: Phosphor Bronze/  
 Gold-flash



Circuit No.	Dimensions			
	A	B	C	D
02P	1.25	6.10	4.01	----
03P	2.50	7.35	5.26	----
04P	3.75	8.60	6.51	----
05P	5.00	9.85	7.76	----
06P	6.25	11.10	9.01	----
07P	7.50	12.35	10.26	7.50
08P	8.75	13.60	11.51	8.75
10P	11.25	16.10	14.01	10.00
11P	12.50	17.35	15.26	11.25
12P	13.75	18.60	16.51	12.50
13P	15.00	19.85	17.76	13.75
14P	16.25	21.10	19.01	15.00
15P	17.50	22.35	20.26	16.25
20P	23.75	28.60	26.51	22.50
25P	30.00	34.85	32.76	28.75
30P	36.25	41.10	39.01	35.00



						燦達電子工業股份有限公司 JOINT TECH ELECTRONIC IND. CO., LTD.	
UNIT	SCALE	SHEET		TITLE:			
mm	1 : 1	1 of 2		1.25mm PITCH 90° WAFER-SMT TYPE, ULTRA LOW PROFILE			
DRAWN BY		APPROVED BY					
歐陽小強		董正一					
2006.11.30		2006.11.30		DRAW NO. : A1255WR-S-XP			
GENERAL TOLERANCE							
A5	EN1511090005	2015.11.10	劉建芳	X.X±0.25	ANGLE± 		
A4	EN1208130264	2012.09.20	陳錦展	X.XX±0.15			
REV.	DESCRIPTION	DATE	NAME	X.XXX±0.05	REV. A5		

## X-ON Electronics

Largest Supplier of Electrical and Electronic Components

*Click to view similar products for [Headers & Wire Housings](#) category:*

*Click to view products by [Joint Tech](#) manufacturer:*

Other Similar products are found below :

[0015917161](#) [0022155065](#) [57102-F02-18ULF](#) [58102-G61-06LF](#) [582553-1](#) [01.001.5753.1](#) [0050291907](#) [02.125.8002.8](#) [609-3404](#) [61062-3](#)  
[CSU011177004](#) [622-0430](#) [622-3653LF](#) [63453-116](#) [636-1030](#) [636-1427](#) [636-3427](#) [636-4007](#) [641938-9](#) [65495-038](#) [65692-001LF](#) [65781-018](#)  
[65781-047](#) [65817-010LF](#) [65817-015LF](#) [67095-007LF](#) [67601157](#) [68631-112](#) [68645-018](#) [699319-000](#) [70.362.1628.0](#) [70-4210](#) [70-4226B](#) [70-](#)  
[4853B](#) [71.350.2428.0](#) [733-134](#) [733-162](#) [760-3052](#) [MHR-64-VUAL](#) [80.063.4001.1](#) [800-90-001-10-001000](#) [801-43-002-10-013000](#)  
[801-43-006-10-002000](#) [803-43-024-10-001000](#) [803-93-012-10-001000](#) [8-1437020-4](#) [819-22-004-30-001101](#) [820-22-006-30-001101](#)  
[820-22-008-30-001101](#) [821-22-002-10-001101](#)