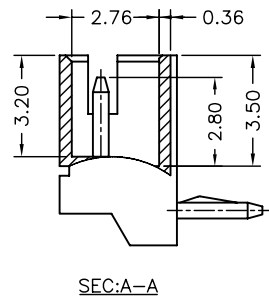


MATED CONDITION



SEC:A-A

P/N LEGEND

A1500 WR-XP XXX
① ② ③ ④

- ① Series No.
- ② Connector type: WR=Right angle
- ③ No. of circuits
- ④ Option code:
Blank=Nylon 66-V0, Gray(7528C), Tin-plated
WH =Nylon 66-V0, White, Tin-plated

SPECIFICATIONS

Current Rating: 1A AC,DC
Voltage Rating: 100V AC,DC
Temperature Range: -25°C ~ +85°C
Contact Resistance: 20mΩ Max.
Insulation Resistance: 500MΩ Min.
Withstanding Voltage: 500V AC/minute
Pin Material: Brass

| Circuit No. | Dimensions | | |
|-------------|------------|-------|-------|
| | A | B | C |
| 02P | 1.50 | 4.50 | 3.75 |
| 03P | 3.00 | 6.00 | 5.25 |
| 04P | 4.50 | 7.50 | 6.75 |
| 05P | 6.00 | 9.00 | 8.25 |
| 06P | 7.50 | 10.50 | 9.75 |
| 07P | 9.00 | 12.00 | 11.25 |
| 08P | 10.50 | 13.50 | 12.75 |
| 09P | 12.00 | 15.00 | 14.25 |
| 10P | 13.50 | 16.50 | 15.75 |
| 11P | 15.00 | 18.00 | 17.25 |
| 12P | 16.50 | 19.50 | 18.75 |
| 13P | 18.00 | 21.00 | 20.25 |



燦達電子工業股份有限公司
JOINT TECH ELECTRONIC IND. CO., LTD.

UNIT: mm SCALE: 1:1 SHEET: 1 of 1

DRAWN BY: 董正一
2001.02.01

APPROVED BY: 董正一
2001.02.01

GENERAL TOLERANCE

X. X ± 0.25
X. XX ± 0.15
X. XXX ± 0.05

TITLE:
**1.50mm PITCH
90° WAFER**

DRAW NO.: A1500WR-XP REV. B4

| REV. | DESCRIPTION | DATE | NAME |
|------|--------------|------------|------|
| B4 | EN1704060001 | 2017.04.06 | 周傑亮 |
| B3 | EN1107140278 | 2011.07.13 | 陳錦展 |

X-ON Electronics

Largest Supplier of Electrical and Electronic Components

Click to view similar products for [Headers & Wire Housings](#) category:

Click to view products by [Joint Tech](#) manufacturer:

Other Similar products are found below :

[0015917161](#) [0022155065](#) [57102-F02-18ULF](#) [58102-G61-06LF](#) [582553-1](#) [01.001.5753.1](#) [0050291907](#) [02.125.8002.8](#) [609-3404](#) [61062-3](#)
[CSU011177004](#) [622-0430](#) [622-3653LF](#) [63453-116](#) [636-1030](#) [636-1427](#) [636-3427](#) [636-4007](#) [641938-9](#) [65495-038](#) [65692-001LF](#) [65781-018](#)
[65781-047](#) [65817-010LF](#) [65817-015LF](#) [67095-007LF](#) [67601157](#) [68631-112](#) [68645-018](#) [699319-000](#) [70.362.1628.0](#) [70-4210](#) [70-4226B](#) [70-](#)
[4853B](#) [71.350.2428.0](#) [733-134](#) [733-162](#) [760-3052](#) [MHR-64-VUAL](#) [80.063.4001.1](#) [800-90-001-10-001000](#) [801-43-002-10-013000](#)
[801-43-006-10-002000](#) [803-43-024-10-001000](#) [803-93-012-10-001000](#) [8-1437020-4](#) [819-22-004-30-001101](#) [820-22-006-30-001101](#)
[820-22-008-30-001101](#) [821-22-002-10-001101](#)