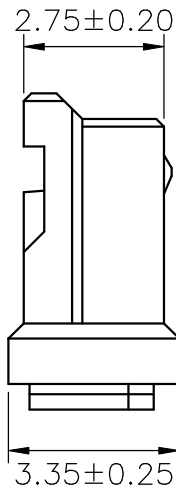


Circuit 1



**SPECIFICATIONS**

Current Rating: 3A AC,DC  
 Voltage Rating: 350V AC,DC  
 Temperature Range: -25°C ~ +85°C  
 Contact Resistance: 20mΩ Max.  
 Insulation Resistance: 1000MΩ Min.  
 Withstanding Voltage: 500V AC/minute  
 Material: Nylon 66,UL94V-0  
 Color: Natural(White)

**Ordering Information & Dimensions**

PART NO.	Dimensions	
	A	B
A1501H-02P	1.50	4.10
A1501H-03P	3.00	5.60
A1501H-04P	4.50	7.10
A1501H-05P	6.00	8.60
A1501H-06P	7.50	10.10
A1501H-07P	9.00	11.60
A1501H-08P	10.50	13.10
A1501H-09P	12.00	14.60
A1501H-10P	13.50	16.10
A1501H-11P	15.00	17.60
A1501H-12P	16.50	19.10
A1501H-13P	18.00	20.60
A1501H-14P	19.50	22.10
A1501H-15P	21.00	23.60

			<b>JOINT TECH ELECTRONIC IND. CO., LTD.</b> <b>JOY DAY INDUSTRIAL CO., LTD.</b>	
UNIT		SCALE	SHEET	TITLE:
mm			1 of 1	<b>1.50mm PITCH HOUSING</b>
DRAWN BY		APPROVED BY		
董正一 2001.02.01		董正一 2001.02.01		
GENERAL TOLERANCE				
X. X±0.25		ANGLE±		
X. XX±0.15				
X. XXX±0.05				
BO	NEW RELEASE	2006.04.13	DRAW NO. : A1501H-XP	
REV.	DESCRIPTION	DATE	REV. BO	

## X-ON Electronics

Largest Supplier of Electrical and Electronic Components

*Click to view similar products for [Headers & Wire Housings](#) category:*

*Click to view products by [Joint Tech](#) manufacturer:*

Other Similar products are found below :

[95000-104TRLF](#) [10135584-644402LF](#) [DF62W-EP2022PCA](#) [95000-106TRLF](#) [DF62W-2022SCA](#) [DF62W-EP2022PC](#) [2203348](#) [DF62W-2022SC](#) [1084018](#) [1029039](#) [1084017](#) [802-10-012-10-002000](#) [1112640](#) [1112639](#) [891-007-9SS-BST1T](#) [000-34000](#) [0008550134](#) [0009482033](#) [0009507031](#) [57102-F02-18ULF](#) [57102-S06-03LF](#) [57202-S52-04LF](#) [PCN6-15S-2.5E](#) [0039019024](#) [58102-G61-06LF](#) [582553-1](#) [0009485154](#) [0009508121](#) [0022285053](#) [0050291907](#) [018731A](#) [LY20-4P-DT1-P1E-BR](#) [02.125.8002.8](#) [60101931](#) [60598-1 \(Cut Strip\)](#) [M1625-3R/100](#) [61062-3](#) [61082-181009](#) [CSU011177004](#) [636-1427](#) [638009-1](#) [641938-9](#) [641991-4](#) [644168-1](#) [644827-2](#) [647662-1](#) [65039-019ELF](#) [65692-001LF](#) [65781-018](#) [65781-047](#)