

P/N LEGEND

A1501	WV-S-XP	N	X	X	XX	N	00	L
①	②	③	④	⑤	⑥	⑦	⑧	⑨

① Series No.  
 ② Connector type: WV=Vertical  
 ③ S=SMT  
 ④ No. of circuits  
 ⑤ N=Halogen Free  
 ⑥ Material: 6=Nylon 6T,UL94V-0 ; L=LCP,UL94V-0  
 ⑦ Color: N=Natural ; B=Black  
 ⑧ Plating code for contacts:  
 T1=Tin-plated ; G1=Gold-Flash  
 ⑨ Plating code: N=Non-plating  
 ⑩ Option code: 00=Standard  
 ⑪ Packing code: L=Tape Reel(With Cap or Mylar)

SPECIFICATIONS

Current Rating: 3A AC,DC  
 Voltage Rating: 350V AC,DC  
 Temperature Range: -25°C ~ +85°C  
 Contact Resistance: 20mΩ Max.  
 Insulation Resistance: 1000MΩ Min.  
 Withstanding Voltage: 500V AC/minute  
 Pin Material: Brass

Ordering Information & Dimensions

PART NO.	Dimensions	
	A	B
02P	1.50	4.30
03P	3.00	5.80
04P	4.50	7.30
05P	6.00	8.80
06P	7.50	10.30
07P	9.00	11.80
08P	10.50	13.30
09P	12.00	14.80
10P	13.50	16.30
11P	15.00	17.80
12P	16.50	19.30
13P	18.00	20.80
14P	19.50	22.30
15P	21.00	23.80



燦達電子工業股份有限公司  
 JOINT TECH ELECTRONIC IND. CO., LTD.

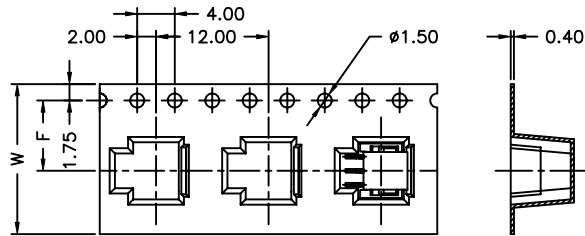
UNIT	SCALE	SHEET
mm	1 : 1	1 of 2
DRAWN BY	APPROVED BY	
郭木思	陳彥兆	
2016.02.25	2016.02.25	
GENERAL TOLERANCE		
X. X±0.25	ANGLE±	
X. XX±0.15	▽	
X. XXX±0.05	⊕	

TITLE:	1.50mm PITCH 180° WAFER-SMT TYPE	DRAW NO. : A1501WV-S-XPXXXXXXXXXX	REV. A0

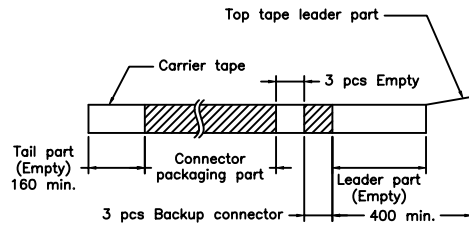
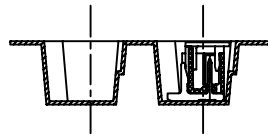
AO	NEW RELEASE	2016.02.25	郭木思
REV.	DESCRIPTION	DATE	NAME



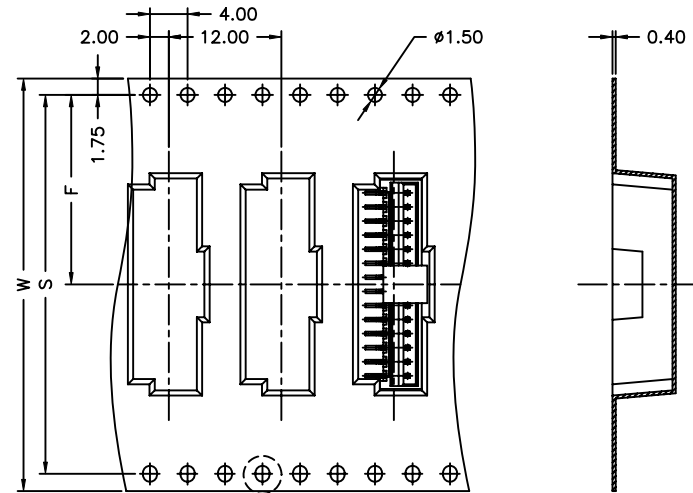
02~09 Contacts



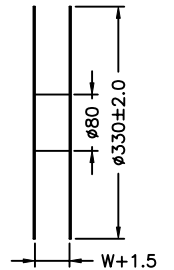
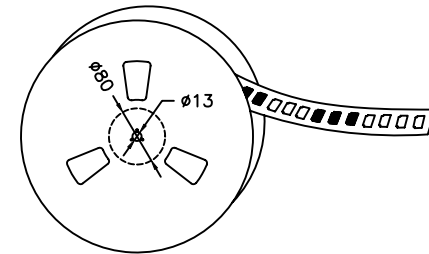
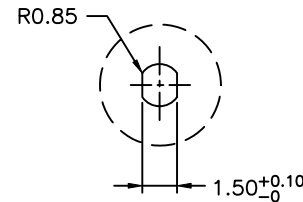
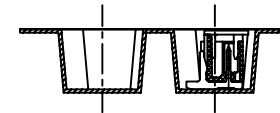
Unreeling direction →



10~15 Contacts



Unreeling direction →



Number of Contacts	W±0.3	F±0.1	S±0.1	Q'ty/Reel
02P	16	7.50	/	500
03P	16	7.50		500
04P	16	7.50		500
05P	24	11.50		500
06P	24	11.50		500
07P	24	11.50		500
08P	24	11.50		500
09P	24	11.50		500
10P	32	14.20		28.40
11P	32	14.20	28.40	500
12P	32	14.20	28.40	500
13P	32	14.20	28.40	500
14P	44	20.20	40.40	500
15P	44	20.20	40.40	500

				<b>JOINT TECH ELECTRONIC IND. CO., LTD.</b> <b>JOY DAY INDUSTRIAL CO., LTD.</b>	
		UNIT	SCALE	SHEET	
		mm	1 : 1	2 of 2	
		DRAWN BY		APPROVED BY	
		郭本恩		陳彥兆	
		2016.02.25		2016.02.25	
		GENERAL TOLERANCE			
		X. X±0.25	ANGLE±		<b>1.50mm PITCH</b> <b>180° WAFER-SMT TYPE</b> <b>TAPING SPEC.</b>
		X. XX±0.15			
		X. XXX±0.05			
A0	NEW RELEASE	2016.02.25	郭本恩	DRAW NO. :	
REV.	DESCRIPTION	DATE	NAME	A1501WV-S-XPXXXXXXX	

## X-ON Electronics

Largest Supplier of Electrical and Electronic Components

*Click to view similar products for [Headers & Wire Housings](#) category:*

*Click to view products by [Joint Tech](#) manufacturer:*

Other Similar products are found below :

[57102-F02-18ULF](#) [58102-G61-06LF](#) [0009485154](#) [009176003701906](#) [0050291907](#) [02.125.8002.8](#) [609-3404](#) [61062-3](#) [622-0430](#) [622-3653LF](#)  
[63453-116](#) [636-1030](#) [636-1427](#) [636-3427](#) [636-4007](#) [641938-9](#) [644827-2](#) [65495-038](#) [65692-001LF](#) [65781-018](#) [65781-047](#) [65817-010LF](#)  
[65817-015LF](#) [66207-023LF](#) [67016-026LF](#) [67095-007LF](#) [68631-112](#) [68645-018](#) [68648-049](#) [699319-000](#) [70.362.1628.0](#) [70-4210](#) [70-4226B](#)  
[70-4853B](#) [707-5020](#) [707-5028](#) [71.350.2428.0](#) [71961-016LF](#) [733-134](#) [754199-000](#) [760-3052](#) [787-8014-00](#) [FCN-367T-T012/H](#) [80.063.4001.1](#)  
[800-90-001-10-001000](#) [800-90-010-10-002000](#) [801-43-002-10-013000](#) [801-43-006-10-002000](#) [803-41-018-10-001000](#) [803-43-014-20-](#)  
[001000](#)