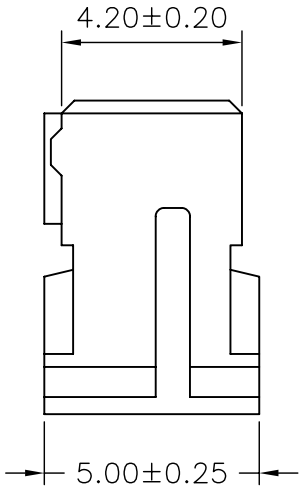
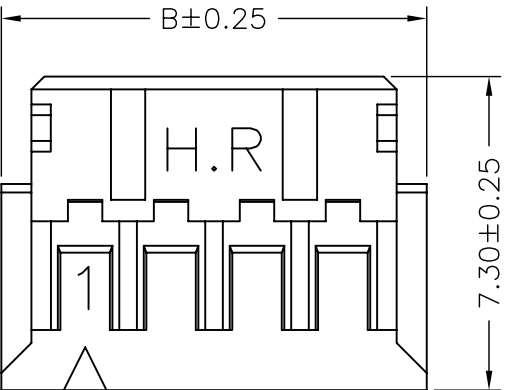
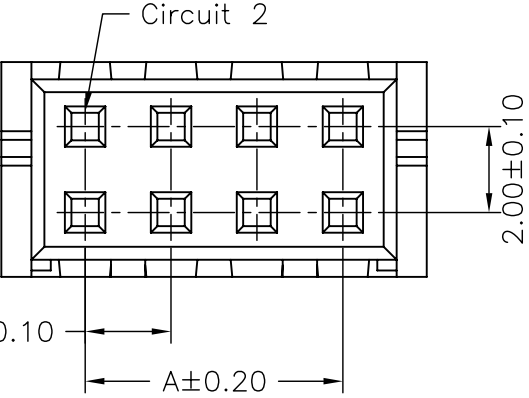
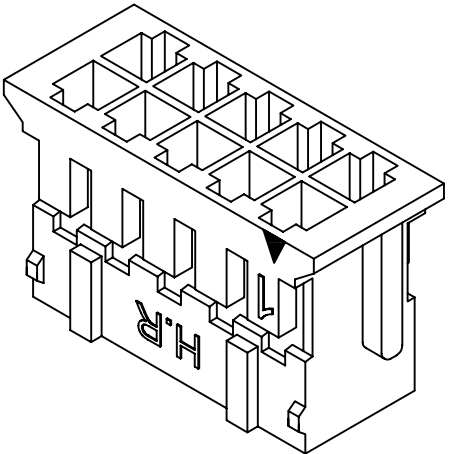


SPECIFICATIONS
 Current Rating: 3A AC,DC
 Voltage Rating: 250V AC,DC
 Temperature Range: -25°C ~ +85°C
 Contact Resistance: 10mΩ Max.
 Insulation Resistance: 1000MΩ Min.
 Withstanding Voltage: 800V AC/minute
 Material: Nylon 66,UL94V-0
 Color: Natural(White)

Ordering Information & Dimensions


PART NO.	Dimensions	
	A	B
A2004H-2X02P	2.00	5.90
A2004H-2X03P	4.00	7.90
A2004H-2X04P	6.00	9.90
A2004H-2X05P	8.00	11.90
A2004H-2X06P	10.00	13.90
A2004H-2X07P	12.00	15.90
A2004H-2X08P	14.00	17.90
A2004H-2X09P	16.00	19.90
A2004H-2X10P	18.00	21.90
A2004H-2X11P	20.00	23.90
A2004H-2X12P	22.00	25.90
A2004H-2X13P	24.00	27.90
A2004H-2X14P	26.00	29.90
A2004H-2X15P	28.00	31.90
A2004H-2X16P	30.00	33.90
A2004H-2X17P	32.00	35.90
A2004H-2X18P	34.00	37.90
A2004H-2X19P	36.00	39.90
A2004H-2X20P	38.00	41.90
A2004H-2X21P	40.00	43.90
A2004H-2X22P	42.00	45.90
A2004H-2X23P	44.00	47.90
A2004H-2X24P	46.00	49.90



2.00±0.10
 A±0.20

Circuit 1

Circuit 2

				JOINT TECH ELECTRONIC IND. CO., LTD. JOY DAY INDUSTRIAL CO., LTD.	
		UNIT	SCALE	SHEET	TITLE:
		mm		1 of 1	
		DRAWN BY	APPROVED BY		
		董正一	董正一		
		2001.02.01	2001.02.01		
		GENERAL TOLERANCE			
B2	REVISE	2008.11.06			
B1	REVISE	2007.07.06	X. X±0.25	ANGLE±	
B0	NEW RELEASE	2006.05.13	X. XX±0.15		
REV.	DESCRIPTION	DATE	X. XXX±0.05		

2.00mm PITCH HOUSING

DRAW NO. : A2004H-2XNP	REV. B2
------------------------	---------

X-ON Electronics

Largest Supplier of Electrical and Electronic Components

Click to view similar products for [Headers & Wire Housings](#) category:

Click to view products by [Joint Tech](#) manufacturer:

Other Similar products are found below :

[57102-F02-18ULF](#) [58102-G61-06LF](#) [582553-1](#) [009176003701906](#) [01.001.5753.1](#) [0050291907](#) [02.125.8002.8](#) [609-3404](#) [61062-3](#)
[CSU011177004](#) [622-0430](#) [622-3653LF](#) [63453-116](#) [636-1030](#) [636-1427](#) [636-3427](#) [636-4007](#) [641938-9](#) [644827-2](#) [65495-038](#) [65692-001LF](#)
[65781-018](#) [65781-047](#) [65817-010LF](#) [65817-015LF](#) [66207-023LF](#) [67095-007LF](#) [67601157](#) [68631-112](#) [68645-018](#) [699319-000](#)
[M90C108951C](#) [70.362.1628.0](#) [70-4210](#) [70-4226B](#) [70-4853B](#) [707-5028](#) [71.350.2428.0](#) [71961-016LF](#) [733-134](#) [733-162](#) [754199-000](#) [760-](#)
[3052](#) [80.063.4001.1](#) [800-90-001-10-001000](#) [800-90-010-10-002000](#) [801-43-002-10-013000](#) [801-43-006-10-002000](#) [803-41-018-10-001000](#)
[803-43-024-10-001000](#)