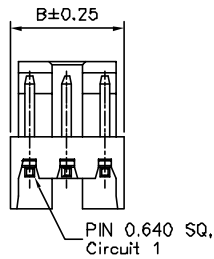
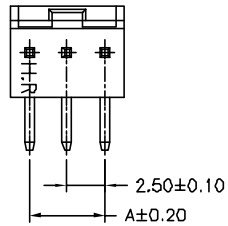
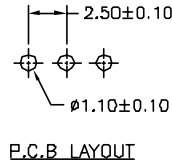
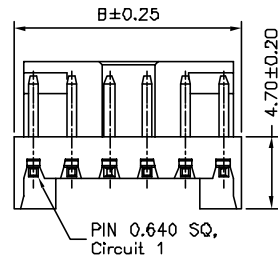
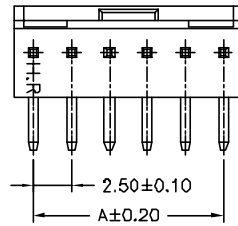


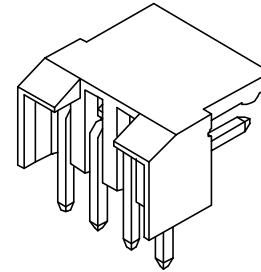
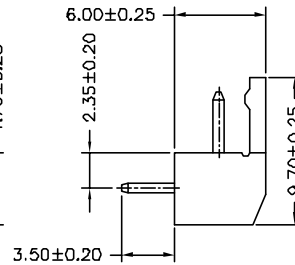
02P,03P



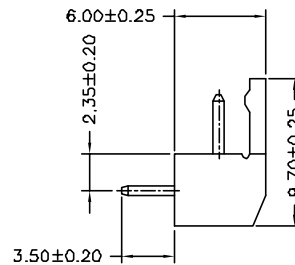
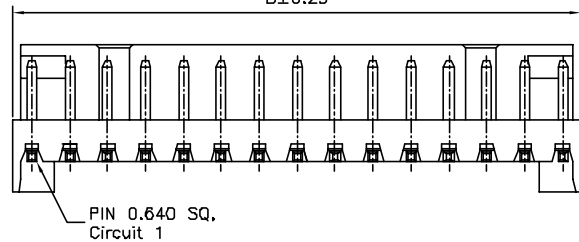
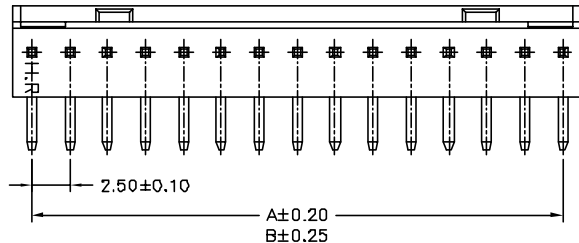
04P~06P



P.C.B. LAYOUT



07P~15P



SPECIFICATIONS

Current Rating: 3A AC,DC
 Voltage Rating: 500V AC,DC
 Temperature Range: -25°C ~ +85°C
 Contact Resistance: 20mΩ Max
 Insulation Resistance: 100MΩ Min
 Withstanding Voltage: 1500V AC/minute
 Pin Material: Brass/Tin-plated
 Material: Nylon 66,UL94V-0
 Pantone Color: 153C

Ordering Information & Dimensions

PART NO.	Dimensions	
	A	B
A2500WR-02P	2.50	5.00
A2500WR-03P	5.00	7.50
A2500WR-04P	7.50	10.00
A2500WR-05P	10.00	12.50
A2500WR-06P	12.50	15.00
A2500WR-07P	15.00	17.50
A2500WR-08P	17.50	20.00
A2500WR-09P	20.00	22.50
A2500WR-10P	22.50	25.00
A2500WR-11P	25.00	27.50
A2500WR-12P	27.50	30.00
A2500WR-13P	30.00	32.50
A2500WR-14P	32.50	35.00
A2500WR-15P	35.00	37.50



JOINT TECH ELECTRONIC IND. CO., LTD.
 JOY DAY INDUSTRIAL CO., LTD.

UNIT	SCALE	SHEET	TITLE:
mm		1 of 1	2.50mm PITCH 90 WAFER
DRAWN BY	APPROVED BY	DRAW NO.:	
董正一	董正一	A2500WR-XP	REV. B1
2001.02.01	2001.02.01		
GENERAL TOLERANCE			
B1	REVISE	2008.05.23	X.X ±0.25
B0	NEW RELEASE	2006.02.21	X.XX ±0.15
REV.	DESCRIPTION	DATE	X.XXX ±0.05

X-ON Electronics

Largest Supplier of Electrical and Electronic Components

Click to view similar products for [Headers & Wire Housings](#) category:

Click to view products by [Joint Tech](#) manufacturer:

Other Similar products are found below :

[0015917161](#) [0022155065](#) [57102-F02-18ULF](#) [58102-G61-06LF](#) [582553-1](#) [01.001.5753.1](#) [0050291907](#) [02.125.8002.8](#) [609-3404](#) [61062-3](#)
[CSU011177004](#) [622-0430](#) [622-3653LF](#) [63453-116](#) [636-1030](#) [636-1427](#) [636-3427](#) [636-4007](#) [641938-9](#) [65495-038](#) [65692-001LF](#) [65781-018](#)
[65781-047](#) [65817-010LF](#) [65817-015LF](#) [67095-007LF](#) [67601157](#) [68631-112](#) [68645-018](#) [699319-000](#) [70.362.1628.0](#) [70-4210](#) [70-4226B](#) [70-](#)
[4853B](#) [71.350.2428.0](#) [733-134](#) [733-162](#) [760-3052](#) [MHR-64-VUAL](#) [80.063.4001.1](#) [800-90-001-10-001000](#) [801-43-002-10-013000](#)
[801-43-006-10-002000](#) [803-43-024-10-001000](#) [803-93-012-10-001000](#) [8-1437020-4](#) [819-22-004-30-001101](#) [820-22-006-30-001101](#)
[820-22-008-30-001101](#) [821-22-002-10-001101](#)