

REV.	B3	EN1409020004	2014.09.02	郭本恩	X.XX±0.15	ANGLE
DESCRIPTION					X.XX±0.15	
DATE					X.XX±0.05	
NAME						
GENERAL TOLERANCE	2003.03.27 2003.03.27 修正一					
DRAWN BY	2003.03.27 修正一					
APPROVED BY	2003.03.27 修正一					
UNIT	mm	1 : 1 of 2				
SCALE	SHEET	1 of 2				

燦達電子工業股份有限公司
JOINT TECH ELECTRONIC IND. CO., LTD.

TITLE:
3.00mm PITCH
90° WAFER, SINGLE ROW,
MICRO-FIT

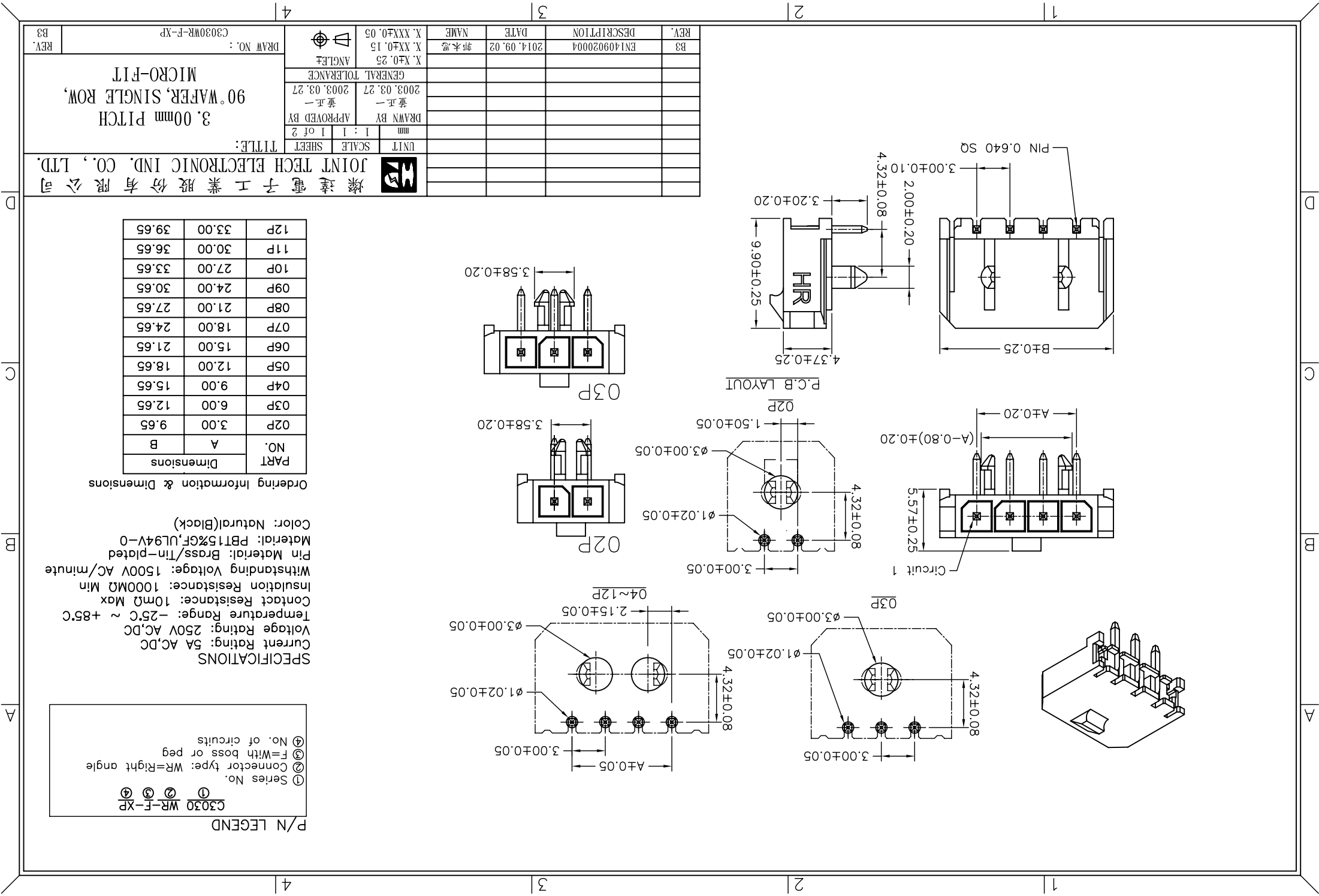
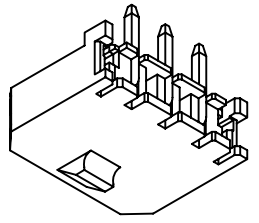
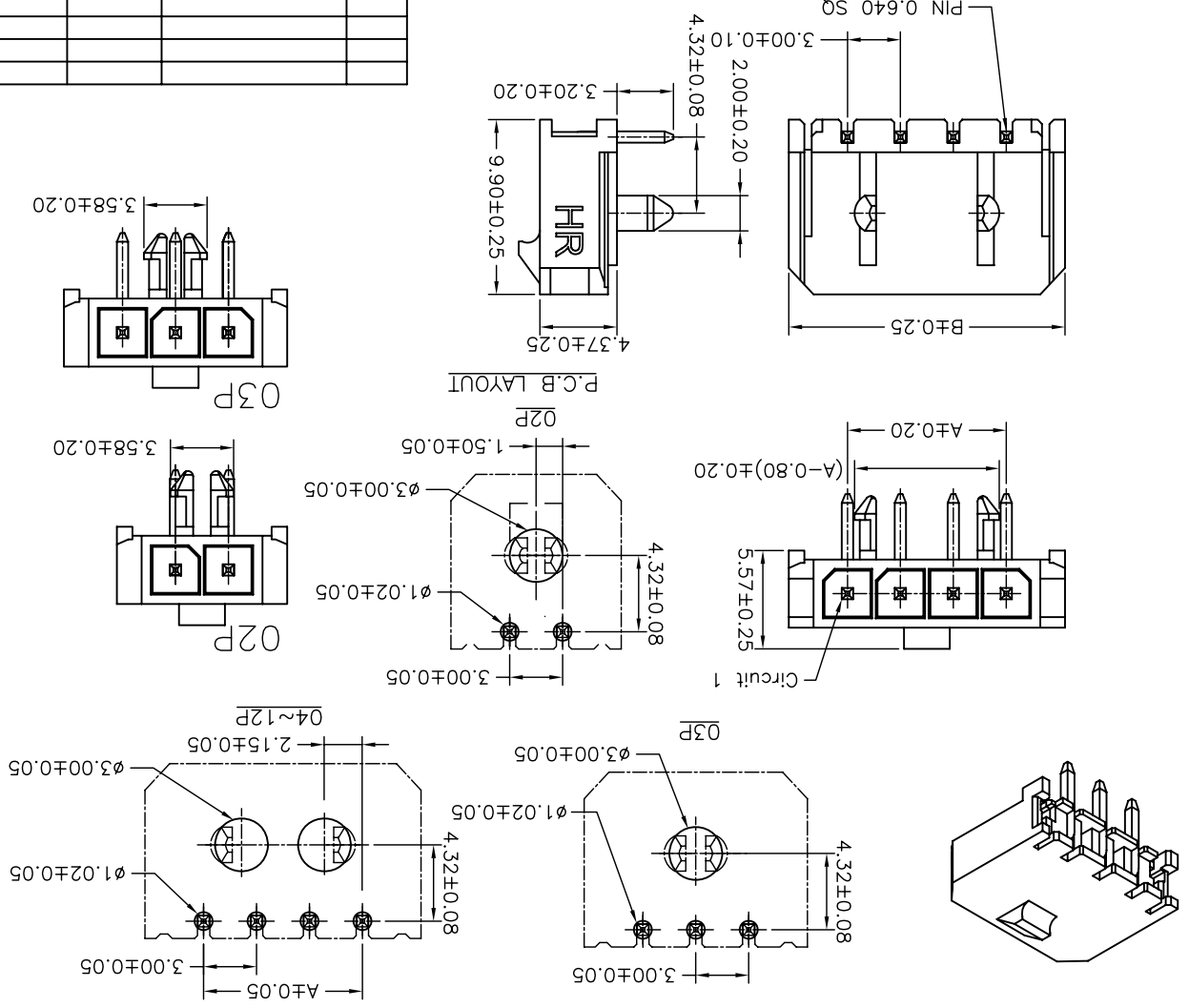
DRAW NO.: C3030WR-F-XP
REV. B3

PART NO.	Dimensions	
	A	B
02P	3.00	9.65
03P	6.00	12.65
04P	9.00	15.65
05P	12.00	18.65
06P	15.00	21.65
07P	18.00	24.65
08P	21.00	27.65
09P	24.00	30.65
10P	27.00	33.65
11P	30.00	36.65
12P	33.00	39.65

Ordering Information & Dimensions

SPECIFICATIONS
 Current Rating: 5A AC,DC
 Voltage Rating: 250V AC,DC
 Temperature Range: -25°C ~ +85°C
 Contact Resistance: 10mΩ Max
 Insulation Resistance: 1000MΩ Min
 Withstanding Voltage: 1500V AC/minute
 Pin Material: Brass/Tin-plated
 Material: PBT15%GF,UL94V-0
 Color: Natural(Black)

P/N LEGEND
 C3030 WR-F-XP
 ① Series No.
 ② Connector type: WR=Right angle
 ③ F=With boss or peg
 ④ No. of circuits



X-ON Electronics

Largest Supplier of Electrical and Electronic Components

Click to view similar products for [Headers & Wire Housings](#) category:

Click to view products by [Joint Tech](#) manufacturer:

Other Similar products are found below :

[95000-104TRLF](#) [10135584-644402LF](#) [DF62W-EP2022PCA](#) [95000-106TRLF](#) [DF62W-2022SCA](#) [DF62W-EP2022PC](#) [2203348](#) [DF62W-2022SC](#) [1084018](#) [1029039](#) [1084017](#) [802-10-012-10-002000](#) [1112640](#) [1112639](#) [891-007-9SS-BST1T](#) [000-34000](#) [0008550134](#) [0009482033](#) [0009507031](#) [57102-F02-18ULF](#) [57102-S06-03LF](#) [57202-S52-04LF](#) [PCN6-15S-2.5E](#) [0039019024](#) [58102-G61-06LF](#) [582553-1](#) [0009485154](#) [0009508121](#) [0022285053](#) [0050291907](#) [018731A](#) [LY20-4P-DT1-P1E-BR](#) [02.125.8002.8](#) [60101931](#) [60598-1 \(Cut Strip\)](#) [M1625-3R/100](#) [61062-3](#) [61082-181009](#) [CSU011177004](#) [636-1427](#) [638009-1](#) [641938-9](#) [641991-4](#) [644168-1](#) [644827-2](#) [647662-1](#) [65039-019ELF](#) [65692-001LF](#) [65781-018](#) [65781-047](#)