

REV.	B3	DESCRIPTION	EN1409020004	DATE	2014.09.02	NAME	鄭本恩	X.XX±0.15	ANGLE	⊕
								X.XX±0.25	GENERAL TOLERANCE	
								2003.03.27	2003.03.27	2003.03.27
								修正一	APPROVED BY	
								mm	SCALE	1 : 1
								UNIT	SHEET	1 of 2
燦達電子工業股份有限公司 JOINT TECH ELECTRONIC IND. CO., LTD. TITLE:										
3.00mm PITCH 90° WAFER, SINGLE ROW, MICRO-FIT										
REV.	B3	DRAW NO.: C3030WR-F-XP								



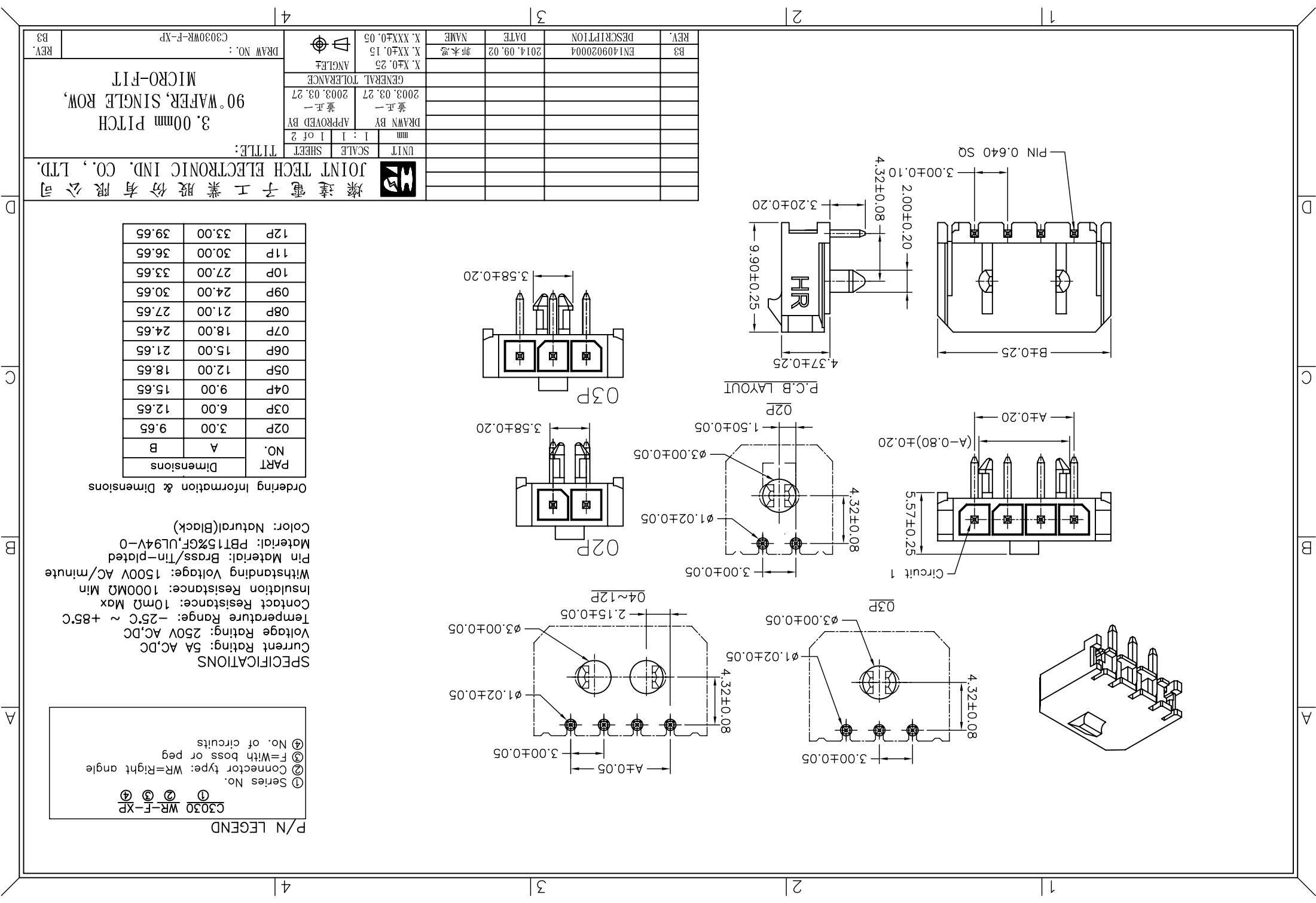
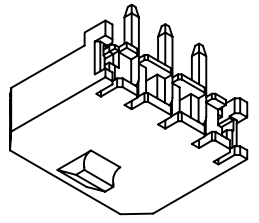
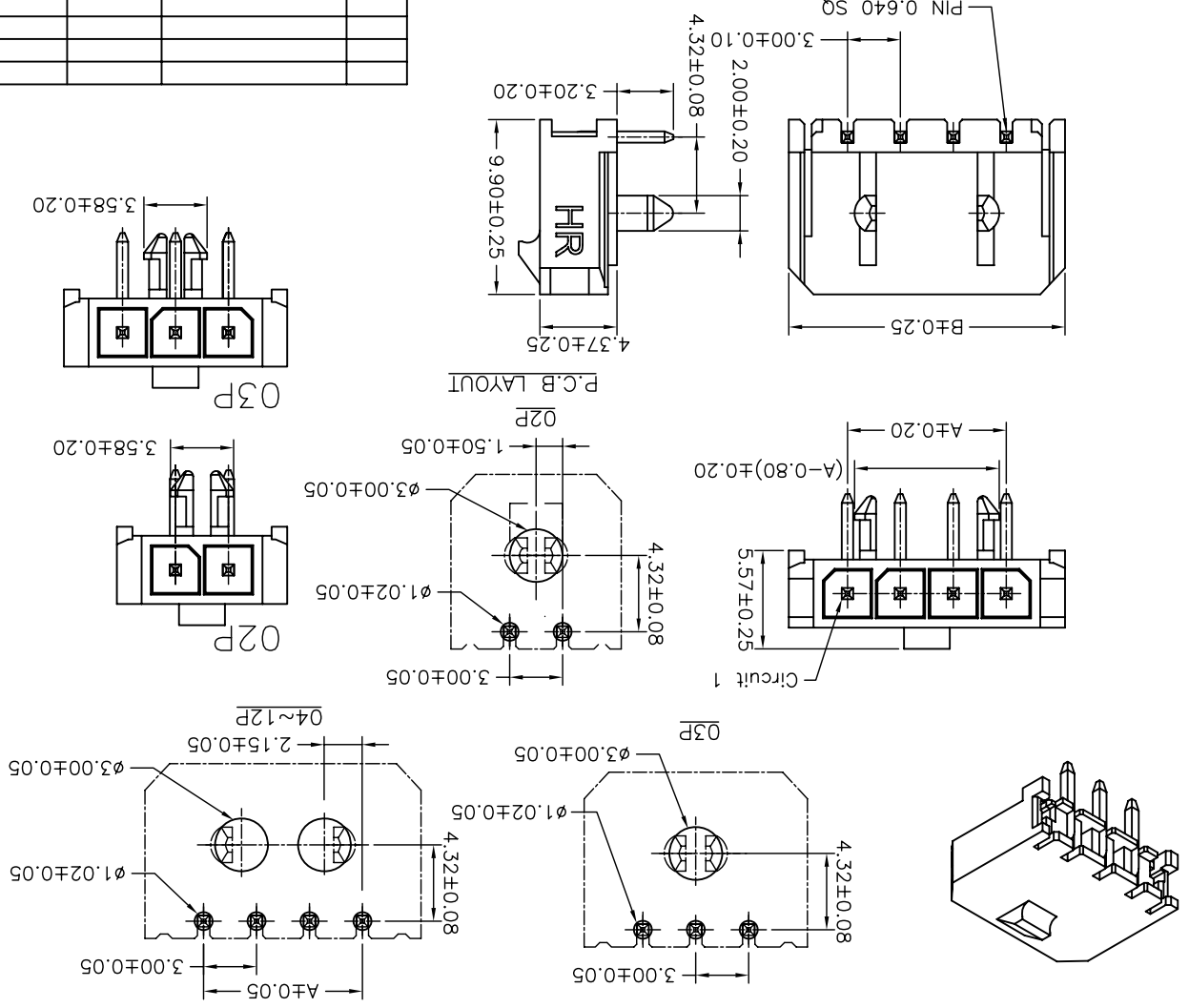
PART NO.	Dimensions	
	A	B
02P	3.00	9.65
03P	6.00	12.65
04P	9.00	15.65
05P	12.00	18.65
06P	15.00	21.65
07P	18.00	24.65
08P	21.00	27.65
09P	24.00	30.65
10P	27.00	33.65
11P	30.00	36.65
12P	33.00	39.65

Ordering Information & Dimensions

**SPECIFICATIONS**  
 Current Rating: 5A AC,DC  
 Voltage Rating: 250V AC,DC  
 Temperature Range: -25°C ~ +85°C  
 Contact Resistance: 10mΩ Max  
 Insulation Resistance: 1000MΩ Min  
 Withstanding Voltage: 1500V AC/minute  
 Pin Material: Brass/Tin-plated  
 Material: PB115%GF,UL94V-0  
 Color: Natural(Black)

**P/N LEGEND**

C3030	WR-F-XP
①	Series No.
②	Connector type: WR=Right angle
③	F=With boss or peg
④	No. of circuits



## X-ON Electronics

Largest Supplier of Electrical and Electronic Components

*Click to view similar products for [Headers & Wire Housings](#) category:*

*Click to view products by [Joint Tech](#) manufacturer:*

Other Similar products are found below :

[95000-104TRLF](#) [10135584-644402LF](#) [DF62W-EP2022PCA](#) [95000-106TRLF](#) [DF62W-2022SCA](#) [DF62W-EP2022PC](#) [2203348](#) [DF62W-2022SC](#) [1084018](#) [1029039](#) [1084017](#) [802-10-012-10-002000](#) [1112640](#) [1112639](#) [891-007-9SS-BST1T](#) [000-34000](#) [0008550134](#) [0009482033](#) [0009507031](#) [57102-F02-18ULF](#) [57102-S06-03LF](#) [57202-S52-04LF](#) [PCN6-15S-2.5E](#) [0039019024](#) [58102-G61-06LF](#) [582553-1](#) [0009485154](#) [0009508121](#) [0022285053](#) [0050291907](#) [018731A](#) [LY20-4P-DT1-P1E-BR](#) [02.125.8002.8](#) [60101931](#) [60598-1 \(Cut Strip\)](#) [M1625-3R/100](#) [61062-3](#) [61082-181009](#) [CSU011177004](#) [636-1427](#) [638009-1](#) [641938-9](#) [641991-4](#) [644168-1](#) [644827-2](#) [647662-1](#) [65039-019ELF](#) [65692-001LF](#) [65781-018](#) [65781-047](#)