

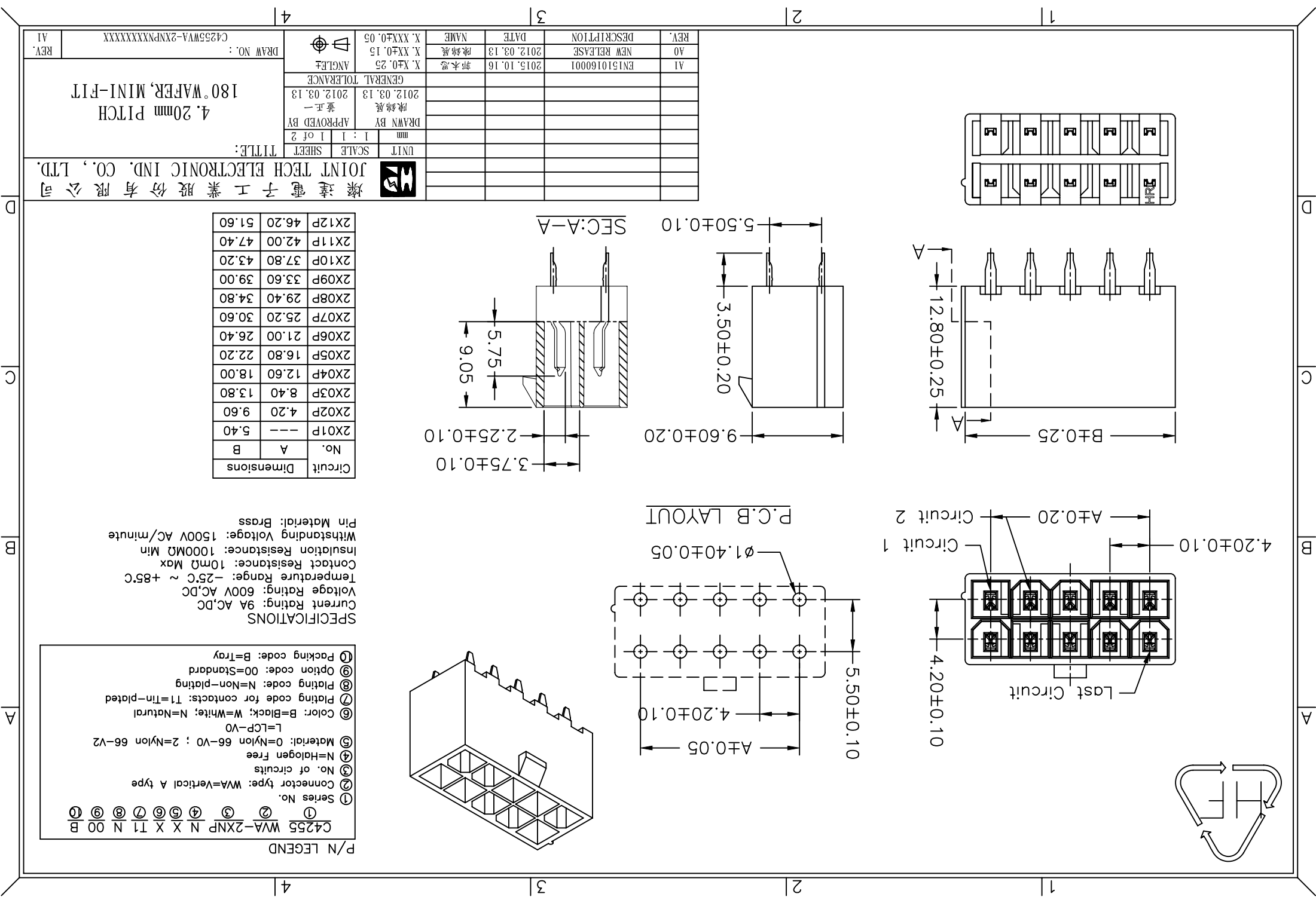
Circuit		Dimensions	
No.	A	B	
2X01P	---	5.40	
2X02P	4.20	9.60	
2X03P	8.40	13.80	
2X04P	12.60	18.00	
2X05P	16.80	22.20	
2X06P	21.00	26.40	
2X07P	25.20	30.60	
2X08P	29.40	34.80	
2X09P	33.60	39.00	
2X10P	37.80	43.20	
2X11P	42.00	47.40	
2X12P	46.20	51.60	

**SPECIFICATIONS**  
 Current Rating: 9A AC,DC  
 Voltage Rating: 600V AC,DC  
 Temperature Range: -25°C ~ +85°C  
 Contact Resistance: 10mΩ Max  
 Insulation Resistance: 1000MΩ Min  
 Withstanding Voltage: 1500V AC/minute  
 Pin Material: Brass

- P/N LEGEND**
- C4255 WVA-2XNP N X X T1 N 00 B
- ① Series No.
  - ② Connector type: WVA=Vertical A type
  - ③ No. of circuits
  - ④ N=Halogen free
  - ⑤ Material: 0=Nylon 66-V0 ; 2=Nylon 66-V2
  - ⑥ Color: B=Black; W=White; N=Natural
  - ⑦ Plating code for contacts: T1=Tin-plated
  - ⑧ Plating code: N=Non-plating
  - ⑨ Option code: 00=Standard
  - ⑩ Packing code: B=Tray

REV.	A1	EN1510160001	2015.10.16	郭木恩	X.XX±0.25	ANGLE
NEW RELEASE	A0	2012.03.13	陳錦展	修正一	2012.03.13	GENERAL TOLERANCE
DESCRIPTION						
DATE						
NAME						
X.XX±0.15						
X.XX±0.05						
DRAWN BY: 陳錦展						
APPROVED BY: 黃正一						
2012.03.13						
1 : 1   1 of 2						
UNIT	SCALE	SHEET	TITLE:			
mm			4.20mm PITCH			
180° WAFER, MINI-FIT						
DRAW NO.: C4255WVA-2XNPXXXXXXXXXX						
REV.	A1					

燦達電子工業股份有限公司  
 JOINT TECH ELECTRONIC IND. CO., LTD.



## X-ON Electronics

Largest Supplier of Electrical and Electronic Components

*Click to view similar products for [Headers & Wire Housings](#) category:*

*Click to view products by [Joint Tech](#) manufacturer:*

Other Similar products are found below :

[95000-104TRLF](#) [10135584-644402LF](#) [DF62W-EP2022PCA](#) [95000-106TRLF](#) [DF62W-2022SCA](#) [DF62W-EP2022PC](#) [2203348](#) [DF62W-2022SC](#) [1084018](#) [1029039](#) [1084017](#) [802-10-012-10-002000](#) [1112640](#) [1112639](#) [891-007-9SS-BST1T](#) [000-34000](#) [0008550134](#) [0009482033](#) [0009507031](#) [57102-F02-18ULF](#) [57102-S06-03LF](#) [57202-S52-04LF](#) [PCN6-15S-2.5E](#) [0039019024](#) [58102-G61-06LF](#) [582553-1](#) [0009485154](#) [0009508121](#) [0022285053](#) [0050291907](#) [018731A](#) [LY20-4P-DT1-P1E-BR](#) [02.125.8002.8](#) [60101931](#) [60598-1 \(Cut Strip\)](#) [M1625-3R/100](#) [61062-3](#) [61082-181009](#) [CSU011177004](#) [636-1427](#) [638009-1](#) [641938-9](#) [641991-4](#) [644168-1](#) [644827-2](#) [647662-1](#) [65039-019ELF](#) [65692-001LF](#) [65781-018](#) [65781-047](#)