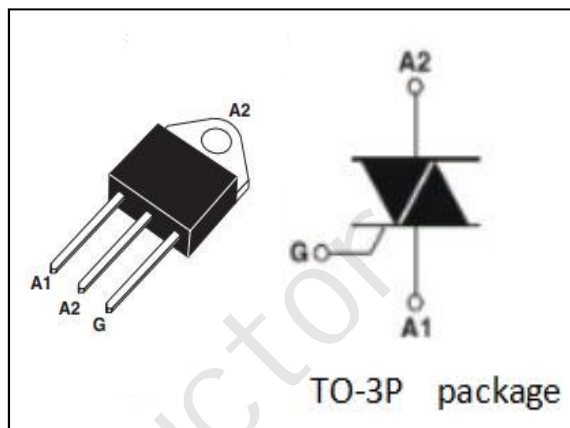


**DESCRIPTION**

- With TO-3P packaging
- Operating in 4 quadrants
- High commutation capability
- Minimum Lot-to-Lot variations for robust device performance and reliable operation

**APPLICATIONS**

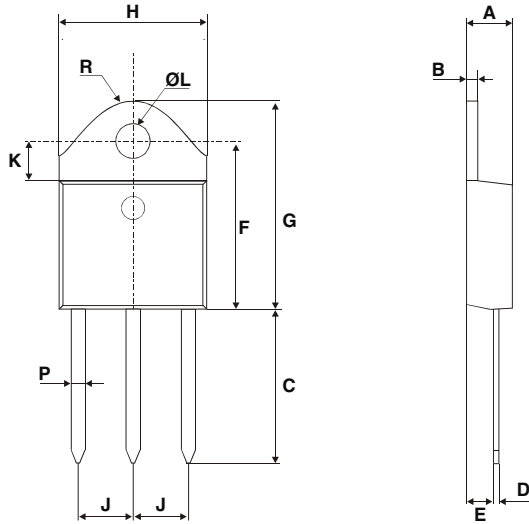
- Switching applications
- Phase control
- Static switching on inductive or resistive load


**ABSOLUTE MAXIMUM RATINGS(T<sub>a</sub>=25°C)**

SYMBOL	PARAMETER		MAX	UNIT
V <sub>DRM</sub>	Repetitive peak off-state voltage		600	V
V <sub>RRM</sub>	Repetitive peak reverse voltage		600	V
I <sub>T(RSM)</sub>	Average on-state current	T <sub>c</sub> =105°C	25	A
I <sub>TSM</sub>	Surge non-repetitive on-state current	50HZ 60HZ	250 260	A
P <sub>G(AV)</sub>	Average gate power dissipation ( over any 20 ms period )		1	W
T <sub>j</sub>	Operating junction temperature		-40~125	°C
T <sub>stg</sub>	Storage temperature		-40~150	°C

**ELECTRICAL CHARACTERISTICS (T<sub>c</sub>=25°C unless otherwise specified)**

SYMBOL	PARAMETER	CONDITIONS		MIN	MAX	UNIT
I <sub>RRM</sub>	Repetitive peak reverse current	V <sub>R</sub> =V <sub>RRM</sub> Rated; V <sub>D</sub> =V <sub>DRM</sub> Rated;	T <sub>j</sub> =25°C		5	μA
I <sub>DRM</sub>	Repetitive peak off-state current		T <sub>j</sub> =125°C		3	mA
V <sub>TM</sub>	On-state voltage	I <sub>T</sub> =35A; t <sub>p</sub> =380 μs			1.55	V
I <sub>GT</sub>	Gate-trigger current	V <sub>D</sub> =12V;R <sub>L</sub> =33Ω;	I		50	mA
			II		50	
			III		50	
			IV		100	
V <sub>GT</sub>	Gate-trigger voltage	V <sub>D</sub> =12V;R <sub>L</sub> =33Ω;			1.3	V
R <sub>th(j-c)</sub>	Junction to case				0.6	°C/W

**TO-3P (Insulated and non insulated) Package Mechanical Data**


REF.	DIMENSIONS					
	Millimeters			Inches		
	Min.	Typ.	Max.	Min.	Typ.	Max.
A	4.4		4.6	0.173		0.181
B	1.45		1.55	0.057		0.061
C	14.35		15.60	0.565		0.614
D	0.5		0.7	0.020		0.028
E	2.7		2.9	0.106		0.114
F	15.8		16.5	0.622		0.650
G	20.4		21.1	0.815		0.831
H	15.1		15.5	0.594		0.610
J	5.4		5.65	0.213		0.222
K	3.4		3.65	0.134		0.144
ØL	4.08		4.17	0.161		0.164
P	1.20		1.40	0.047		0.055
R		4.60			0.181	

## X-ON Electronics

Largest Supplier of Electrical and Electronic Components

*Click to view similar products for [Triacs](#) category:*

*Click to view products by [JSMSEMI](#) manufacturer:*

Other Similar products are found below :

[BT137-600-0Q](#) [OT415Q](#) [2N6075A](#) [NTE5688](#) [BTA2008W-800D,135](#) [D31410](#) [QJ8006NH4TP](#) [QJ8010NH5TP](#) [QJ8008NH4TP](#)  
[QJ8006NH4RP](#) [QJ8010RH5TP](#) [QJ8010NH4TP](#) [QJ8006LH4TP](#) [BT136-600,127](#) [BT137B-800,118](#) [BT138-800E,127](#) [BTA140-600,127](#)  
[BTA208-800B,127](#) [BTA225-800B,127](#) [MAC97A6,116](#) [BTA420-800BT,127](#) [BTA201W-800E,115](#) [BTA212B-800B,118](#) [MAC4DLM-1G](#)  
[TMA164P-L](#) [TMA166P-L](#) [TMA54S-L](#) [BT137-600E,127](#) [BTA08-800BW3G](#) [BTA140-800,127](#) [BTA30-600CW3G](#) [BTA30-600CW3G](#)  
[BTB08-800BW3G](#) [BTB16-600CW3G](#) [BTB16-600CW3G](#) [TMA84S-L](#) [Z0109MN,135](#) [T825T-6I](#) [T1635T-6I](#) [T1220T-6I](#) [NTE5638](#)  
[ACST1235-8FP](#) [BT134-600D,127](#) [BT134-600G,127](#) [BT136X-600E,127](#) [BT137X-600,127](#) [BT139-600E/DG,127](#) [BT139X-600F/DG,127](#)  
[BT139X-800,127](#) [BTA204X-800C,127](#)