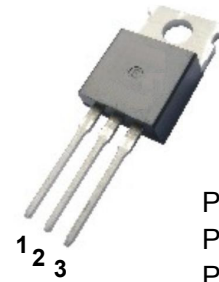


描述 / Descriptions

TO-220 塑封封装 PNP 半导体三极管。
 Silicon PNP transistor in a TO-220 Plastic Package.

特征 / Features

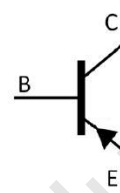
与 TIP41 互补。
 Complement to TIP41.



PIN1 : Base
 PIN 2 : Collector
 PIN 3 : Emitter

用途 / Applications

用于中功率线性开关放大。
 Medium power linear switching applications.

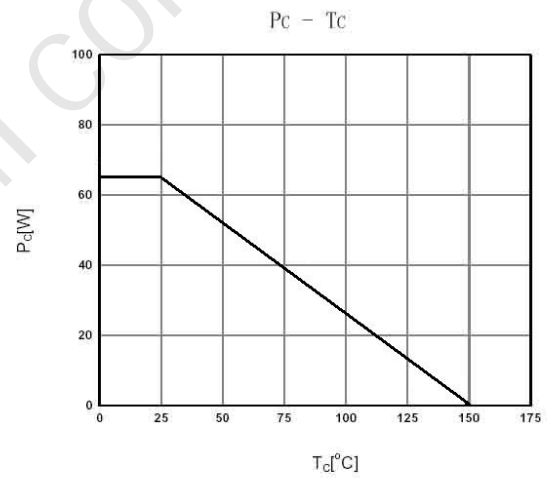
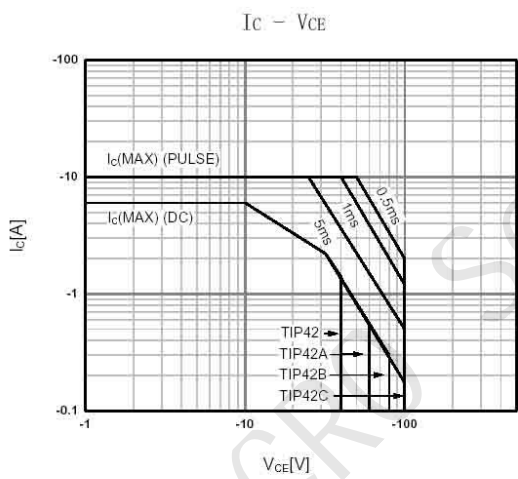
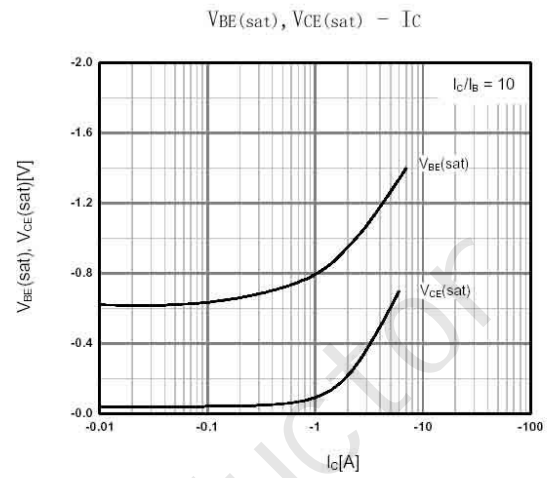
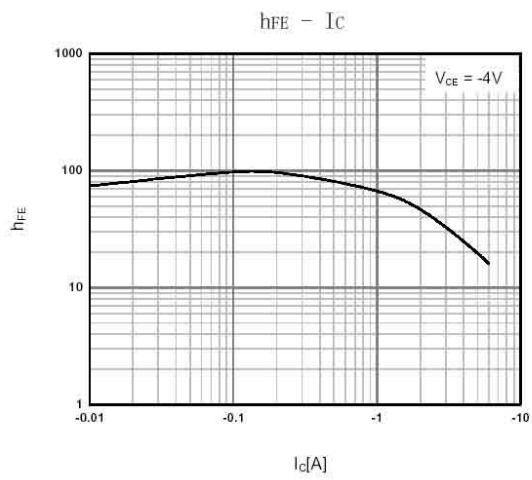

极限参数 / Absolute Maximum Ratings(Ta=25°C)

参数 Parameter	符号 Symbol	数值 Rating				单位 Unit
		TIP42	TIP42A	TIP42B	TIP42C	
Collector to Base Voltage	V_{CBO}	-40	-60	-80	-100	V
Collector to Emitter Voltage	V_{CEO}	-40	-60	-80	-100	V
Emitter to Base Voltage	V_{EBO}	-5.0				V
Collector Current - Continuous	I_C	-6.0				A
Peak Collector Current	I_{CP}	-10				A
Base Current - Continuous	I_B	-2.0				A
Collector Power Dissipation	P_C	2.0				W
Collector Power Dissipation	$P_C(T_c=25^\circ\text{C})$	65				W
Junction Temperature	T_j	150				°C
Storage Temperature Range	T_{sag}	-55~150				°C

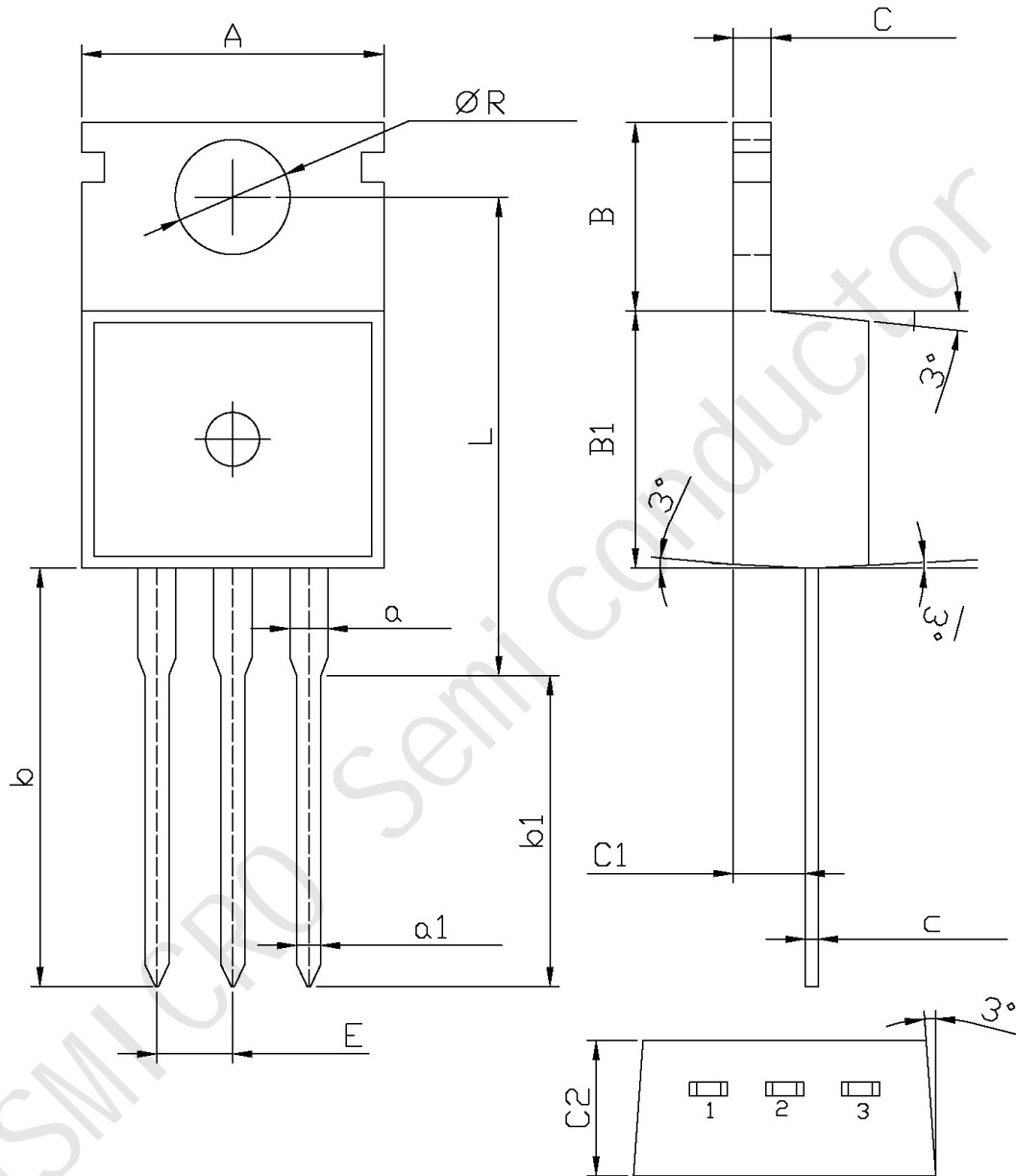
电性能参数 / Electrical Characteristics(Ta=25°C)

参数 Parameter	符号 Symbol	测试条件 Test Conditions	最小值 Min	典型值 Typ	最大值 Max	单位 Unit
Collector to Emitter Breakdown Voltage	V _{CEO}	TIP42	-40			V
		TIP42A	-60			
		TIP42B	-80			
		TIP42C	-100			
Collector Cut-Off Current	I _{CEO}	TIP42 TIP42A	V _{CE} =-30V	I _B =0	-0.7	mA
		TIP42B TIP42C	V _{CE} =-60V	I _B =0		
Collector Cut-Off Current	I _{CES}	TIP42	V _{CE} =-40V	V _{EB} =0	-400	μA
		TIP42A	V _{CE} =-60V	V _{EB} =0		
		TIP42B	V _{CE} =-80V	V _{EB} =0		
		TIP42C	V _{CE} =-100V	V _{EB} =0		
Emitter Cut-Off Current	I _{EBO}	V _{EB} =-5.0V	I _C =0		-1.0	mA
DC Current Gain	h _{FE(1)}	V _{CE} =-4.0V	I _C =-3.0A	15	75	
	h _{FE(2)}	V _{CE} =-4.0V	I _C =-0.3A	30		
Collector to Emitter Saturation Voltage	V _{CE(sat)}	I _C =-6.0A	I _B =-0.6A		-1.5	V
Base to Emitter Voltage	V _{BE}	I _C =-6.0A	V _{CE} =-4.0V		-2.0	V
Transition Frequency	f _T	V _{CE} =-10V	I _C =-500mA	3.0		MHz

电参数曲线图 / Electrical Characteristic Curve



外形尺寸图 / Package Dimensions



Symbol	Dimensions In Millimeters		Symbol	Dimensions In Millimeters	
	Min	Max		Min	Max
A	9.8	10.2	C	1.2	1.4
R	3.56	3.64	B	6.3	6.7
L	15.7	16.1	B1	9.0	9.4
b	12.6	13.6	C1	2.2	2.6
b1	9.6	10.6	a1	0.7	0.9
a	1.22	1.32	c	0.4	0.6
E	2.34	2.74	C2	4.3	4.7

X-ON Electronics

Largest Supplier of Electrical and Electronic Components

Click to view similar products for [Bipolar Transistors - BJT category](#):

Click to view products by [JSMSEMI manufacturer](#):

Other Similar products are found below :

[619691C](#) [MCH4017-TL-H](#) [MMBT-2369-TR](#) [BC546/116](#) [BC557/116](#) [BSW67A](#) [NJVMJD148T4G](#) [NTE123AP-10](#) [NTE153MCP](#) [NTE16](#)
[NTE195A](#) [NTE92](#) [C4460](#) [2N4401-A](#) [2N6728](#) [2SA1419T-TD-H](#) [2SA2126-E](#) [2SB1204S-TL-E](#) [2SC2712S-GR,LF](#) [2SC5488A-TL-H](#)
[2SD2150T100R](#) [SP000011176](#) [2N2907A](#) [2N3904-NS](#) [2N5769](#) [2SC2412KT146S](#) [2SD1816S-TL-E](#) [CPH6501-TL-E](#) [MCH4021-TL-E](#)
[MJE340](#) [US6T6TR](#) [NJL0281DG](#) [732314D](#) [CPH3121-TL-E](#) [CPH6021-TL-H](#) [873787E](#) [IMZ2AT108](#) [UMX21NTR](#) [MCH6102-TL-E](#) [FP204-](#)
[TL-E](#) [NJL0302DG](#) [2N3583](#) [2SA2014-TD-E](#) [2SC2812-5-TB-E](#) [30A02MH-TL-E](#) [TN6717A](#) [NSV40301MZ4T1G](#) [NTE13](#) [NTE26](#) [NTE282](#)